

Storage Space Problems Are Often Solved By Built-Ins

Big home or little home, large household or small, there is hardly a family that can say it has adequate storage space. The lack may be general—from attic to the basement—or it may be confined mainly to certain rooms, such as kitchen, bathroom, or family room.

Lumber and lumber paneling are ideal for creating built-ins to correct the lack of storage facilities, for lumber will fit into any decorative scheme and it is economical and easy to work with. This is especially true of softwoods and some of the most readily available are the species that grow in the western pine region.

Built-ins naturally should be appropriate to the room. This sounds elementary, but it takes some planning and forethought to work out the sort of built-ins that will do the best job in a specific situation.

For example, storage space in a kitchen should be co-ordinated with work areas. Drawers and cabinets should be planned to hold heavy equipment below counters and cupboards to contain lighter items should go above. Consideration should be given, too, to space

for mixers, toasters, blenders and other small appliances that a housewife may not wish to keep out all the time.

In a bathroom—even in a small one—there usually is space to box in the area under the basin. This will provide room for towels, extra soap and bathroom tissue, and perhaps also for bulkier things such as hot water bottles. If the bathroom is fairly good-sized, then cabinets may be built on the wall to hold these supplies, medicines and other necessities.

A family room, of course can provide storage space for myriad belongings. These may include movie and slide projection equipment, card tables and game supplies, hobby materials, and radio-phonograph equipment. Space also might be set aside in this room to display a collection of old china and glass, athletic trophies, or, perhaps, prized examples of photography.

The storage wall is another concept that works in many rooms and will provide a great deal of varied storage space.

It is most useful, perhaps, in a

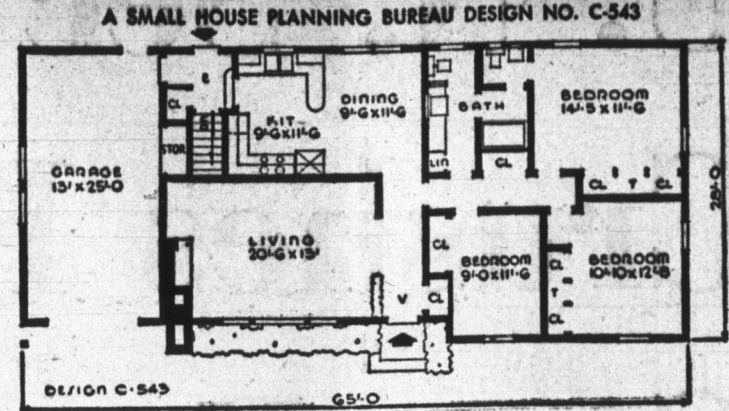
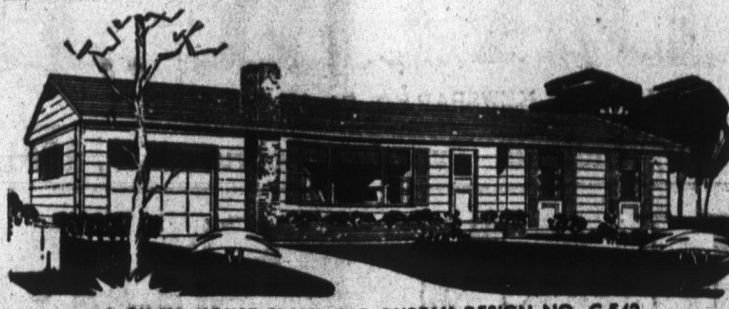
DESIGN No. C-543

The main entrance of this traditional home leads directly into the kitchen, giving privacy to the living room and leading directly to the bedroom wing. Bedrooms have built-in dresser trays and wardrobe type closets. The master bedroom lavatory and another adjoin a common room for the bath.

A well arranged kitchen with waist high oven, counter top range adjoin the large dining area. The stairway leads to a full basement from the rear entry which also has a door to the attached garage.

Well proportioned, the living room is graced with a fireplace and broad picture window. Excluding 351 square feet for the garage the plan covers 1385 square feet and contains 26,772 cubic feet.

For further information about DESIGN No. C-543, write the Small House Planning Bureau, St. Cloud, Minn. In Canada, the Small House Planning Bureau of Canada, St. John, New Brunswick.



Wallpapers Can Coordinate Decor Throughout Home

If you are about to redecorate, keep in mind two major objectives. The first is to bring sparkle and interest to the home, and the second is to keep a look of harmony in the home. No matter how imaginative your ideas are, if they don't jell together the result will be unsatisfying.

For the unprofessional home decorator this often presents a problem. But there is help at hand, and at no charge. Visit your local wallpaper store and take a look at the sample books there.

You will find in almost every sample book, groups of coordinated papers that make a good starting off point for a decorating scheme. Two, three or even four papers are tied together by design or color or mood, or sometimes by all three.

A typical grouping might be a repeat design of a Colonial scene in light beige, brown and burnt orange, which could be used effectively in the hall; a small neat documentary pattern in the same three colors, which would look well in the dining room, and a simple embossed texture of beige with slight flecks of brown and burnt orange, which would be a good choice for the living room as a background for the many books and pictures.

This would give both contrast and harmony in three connected areas. Use these ready-made schemes throughout the house wherever you have adjoining rooms to decorate such as bedroom and bathroom, or kitchen and dinette.

These matchmates are not new, but they are now to be found in the popular priced field in many attractive designs of fine quality. They bring unity and distinction to any room.

Where a room has no particular style, either because of different furnishings that don't blend too well or because of too many distracting colors, the use of these matchmates will do a great deal to tie in scattered effects and give harmony to the room.

Trained decorators know how to use what is on the market, and the do-it-yourself decorator too, should use all these built-in aids that are there for the looking. The job will be easier and the results better.

Bathroom Divider Can Be Useful Storage Cabinet

If there's room in your bathroom for a divider, it might as well be a useful device like a storage cabinet.

A cabinet of six-foot height can easily be custom-built to meet your family's needs. Made of lumber and covered with a paintable or woodgrained hardboard panel, the storage-divider can be both attractive and useful.

To help classify the storage, it's a good idea to have four compartments—two above and two below, each behind sliding doors. The doors are simply panels that fit into metal channels.

The cabinet back can be fitted with towel bars, especially if it is convenient to the lavatory or shower.

To get maximum use of the storage space, line the cabinet with Peg-Board. This will be particularly handy in one of the lower compartments, which could be devoted to cleaning supplies, for hanging shelves that will hold cans and bottles. Other items can be suspended from hooks.

Shelves in the other sections can easily be supported by Peg-Board hooks bent slightly to form horizontal projections at each side. Then the wood shelves may be raised or lowered simply by moving the hooks to meet varying requirements.

All materials for the divider-cabinet are available at lumberyards.

More Profit If Pigs Kept Cool, Comfy

Pigs raised in an insulated, weatherproof house in which the temperatures can be controlled in the 60 to 70 degree Fahrenheit range are healthier, gain fast, and produce more meat per pound of feed.

Available to hog farmers nationally now is a panel system farrowing-nursery house which has insulated and vapor-sealed walls and ceiling that permit only one-fifth as much winter heat loss as concrete block walls.

The mass-produced building sections are put together fast with local labor and a factory-trained supervisor. Using local labor, you can save up to 22 per cent on the total cost, according to the agriculture department of Masonite Corporation.

Farmers are advised that for early weaning, this type of housing is essential; for conventional weaning, it's a wise, profit-building investment.

The specially-treated, smooth hardboard panels forming a "sandwich" over the insulation and internal framing provide great strength and durability.

'Frame' Doorway To Brighten Bedroom

To "pep up" the looks of a child's room, frame the doorway with a border of decorative paneling in a color or pattern different from that on the adjacent walls.

The border, about four inches wide, may be applied along the edges of the door frame. In older homes it might be put over the old woodwork to avoid a refinishing job. Decals can be applied to plastic-surfaced hardboard without marring the washable finish.

Prime-coated hardboards may be used for various home improvements such as canopies, partitions, built-ins and furniture.

New Colors Will Do Much For A Room

Through skillful use of color, you can make rooms look larger or smaller to suit your taste. This eliminates expensive remodeling and often gives the same effect.

Well applied paints in certain colors produce distinct changes in appearance.

For instance, an unusually large room often seems cold and uninviting. Painting the walls with strong warm colors—one of the yellow, orange or red hues—can make the room seem smaller and give it a new and friendly feeling.

Different color paints are useful for creating separate activity areas, in one large room, such as areas for reading, conversation, card games, music, TV or other purposes. Place some pieces of furniture at right angles to the wall in addition to painting two walls different bold or warm shades.

Painting Small Rooms
If you have a very small room, paint furniture, built-in, doors, woodwork and walls all the same color, using a pale cool color. Walls will seem to recede and the same color everywhere will give the illusion of unbroken space. Carry the one-color effect still further by using carpeting and draperies of the same shade.

If you have a long, narrow room, paint the small end a warm, advancing color to make it seem closer, though other walls may be of lighter hues.

If you have an L-shaped room with an alcove or dormer, paint it all one color to unify it.

In buying new furniture, always choose pieces which are in scale for the space in which they are to be used. However, if you own or have inherited some heavy upholstered pieces, you can reduce their bulk by having them slipcovered in a plain fabric to blend with the color of the wall.

Pre-Test Colors
Changing the apparent size of a room need not become a problem, if you try out your ideas on paper first. Use little color blocks in miniature rooms and try out color swatches in the actual rooms you plan to paint to see how color choices will create desired impression.

For a quick change with paint, latex paints are among the easiest to use. These paints dry to the touch in a short time so that the room may be used the same day. They have no unpleasant odor and skips can be repainted with no brush marks showing. They come in a wide range of colors: pastels, dark shades, or custom-mixed.

"Saw Horse"

You can improvise an extra "saw horse" by opening a ladder about two-thirds the way while it is laying on its side.

World-Wide Product

Hardboard is made by Masonite's exploded wood fiber process not only in America, but in Africa and Australia as well.

Prevent Spills

Sprinkle fine sand on freshly painted porch or cellar steps for a skid-proof surface.

Dreds of Peg-Board holes support the storage items out of the way, yet within easy reach when needed.

Installing the panels in a garage with wall studs is easy, since they simply are nailed or screwed to the properly-spaced vertical lumber. Leave a space the thickness of a nickel between panels to allow for expansion. Both panels and matching fixtures may be obtained at lumber yards. Using factory-primed boards will simplify the finishing process.

Paneling A Room Is Now Easier For A Home Owner

Paneling a room in wood is a lot easier than it used to be, and there is no room in the house where wood paneling doesn't fit in with most furnishings.

About 35 native tree species produce lumber suitable for paneling. Each contains several variations in color and grain pattern, so you have literally hundreds of different decorative effects to choose from.

Now Is Time To Check-Up On Roofing

An early spring inspection of the roof is a timely and useful operation, because the rigors of the winter months may have caused damage that would otherwise go unnoticed.

Slow and unseen leaks are among the principal causes of permanent injury to the roof structure, framing and sills. Long exposure to the sun will often cause a roof to become dry and porous, and sudden temperature changes are a factor in the curling of roof shingles.

Some of the danger signals to look for are these:

Asphalt shingles, that have outlived their usefulness, will show the first signs of eventual roof failure by granules washing off, permitting the felt underneath to dry out or crack.

Shrinkage will cause old wood shingles to crack and split. In extreme cases, they will curl, allowing sleet and rain to wash under them, thus weakening the under-structure of the roof. When nails begin to pop out, this is usually a sign that the wood has rotted around the nail holes.

Faulty application and long wear can both contribute to failure of roll roofing. Over the years, the sun dries out this roofing and causes blistering and cracking. Look for specific trouble spots around dormer windows and chimney flashings, vent pipes, valleys and gutters and on hip roofs.

Recommended by roofing experts is a good metal or felt flashing material to assure water-tight dormers.

It is a good idea to examine chimney areas for any indication of corrosion or separation of the flashing.

Although not part of the roof area, gutters and leaders should get the home-owner's attention at roof inspection time. Failure of the gutters is sometimes due to the poor pitch or a stopped-up condition of the leaders.

FARM FIX-UP CELEBRATION

By Handy Jim

Well-planned buildings, coupled with scientific management, can put the hog farmer in a better profit position. With adequate, permanent facilities, he can market hogs throughout the year, not just when the prices are low.

Structures especially planned for production of pigs now are available nationally through fabricators franchised by Masonite Corporation, the world's largest manufacturer of hardboards. These trained fabricators can deliver eight, 12, 16 or 20-stall units, complete with sow pen, farrowing stalls, nursery pens, feed room and service area.

TO PREVENT bulls from damaging the solid wood doors of their pens with their horns, a Minnesota farmer covered them with 1/4" tempered presdwood. The doors still receive the rough treatment, but the smooth, hard surface of the hardboard is undamaged.

DIRECT SALES to consumers by means of a roadside stand are bringing extra profits to many farmers and other folks with big gardens. A serviceable, attractive structure can be built by nailing 1/4" tempered presdwood to a framework of 2x4-inch lumber spaced 16" apart.

For the display shelves, it's a good idea to use tempered presdwood, because it can be kept clean easily and won't absorb food odors. It is moisture-resistant, too, and customers won't get splinters when they pick up an item for close inspection. A let-down front can keep the stand closed securely overnight. Built as suggested, this stand may remain outdoors the year around. It should be given a prime coat of paint and two coats of exterior quality. Built at reasonable cost, this well-constructed stand will soon pay for itself and should last many seasons.

A SHOVELING BOARD is one that's used for shoveling on, not with. On a farm, a floor of 1/4" tempered presdwood in a corn crib, granary or feed storage area is ideal because it has (1) a smooth surface which makes shoveling easy, (2) a long-wearing surface that will last for years and years, and (3) no splinters to wear out feed bags and tempers.

Protect License

Back new automobile license plates with a piece of tempered presdwood to prevent the metal from becoming dented and unsightly.



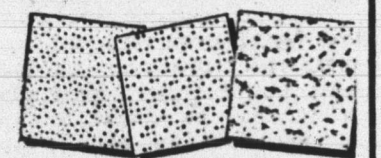
Quiet

for your "busiest" rooms at low cost

Ceiling Tile

AS LOW 11 1/2¢ SQ. FT.

Family room, living room, hallways, kitchen... the very best for stopping noise... install it yourself or we'll recommend expert craftsmen.



Beautiful new designs for homes... the very best for stopping noise... install it yourself or we'll recommend expert craftsmen.

COME in this week for samples, estimates, and help in planning!

ARNOLD Lumber Co., Inc.

"Your Complete Builders' Supply Department Store"

WINCHESTER STREET AT ERIE R. R. CROSSING

Ready-Mixed Concrete

is made "to your order"

Improve your home with concrete! For driveways, sidewalks, retaining walls, and other permanent improvements use Ready-Mixed concrete. DECATUR READY-MIX CORP. furnishes accurately proportioned and mixed concrete when you want it—where you want it. Call 3-2561 for estimates and more information. Our Ready-Mixed Concrete is economical to use. Remember the number—3-2561.

DECATUR READY-MIX CORP.

PHONE 3-2561
E. OAK & FORNAX STS. DECATUR, IND.

HUMPHREY TENSION SEALED Aluminum

COMBINATION STORM WINDOWS AND SCREENS

- Receiving wide acceptance in 28 states.
- Highest quality ALUMINUM, 100% rust-proof.
- Self-lubricating. Smooth-gliding action.
- Completely maintenance free — lasts a lifetime.
- Narrow streamlined appearance. No ugly screws showing.
- Self-storing. No seasonal changeover.
- Gives no-draft, rain-free ventilation.

SEE FOR YOURSELF... Three removable inserts... Screen panel insert... Outer glass insert... Movable glass panel insert. Indirect draft-free ventilation in any weather.

EASY TERMS • To Suit Your Budget • For Free Estimate, Call—

Kohne Window & Awning Co.
711 Winchester St. Phone 3-2259
JOHN KOHNE

Get ready for winter now!

Install A New OIL or GAS AMERICAN FURNACE

Get complete home comfort with AFCO COMFORTMAKER winter air conditioning — Temperature control — Humidity control — Filtered Air — Low cost operation.

For a free estimate — Call

HAUGKS
HEATING — PLUMBING — APPLIANCES
AIR CONDITIONING

209 N. 13th St. Phone 3-3116

DO YOU HAVE A GAS PERMIT?

Want Convenience?

GAS FURNACE

No more "looking after" the furnace. G-E automatic heating ends fuss and bother.

for a FREE Estimate
Phone 3-2615

ASHBAUCHERS' TIN SHOP

Established 1915
Heating, Roofing, Siding, Spouting, Air Conditioning
116 N. 1st St. Decatur, Ind. Phone 3-2615

Ready Mixed Concrete

SAVES YOU MONEY

Save down high labor costs on your construction jobs! We'll deliver your concrete already mixed. No wastage. No time lost. Excellent results!

10% DISCOUNT READY-MIX CONCRETE
PHONE 3-3114

YOST
GRAVEL-READYMIX, INC.

R. R. 1 Decatur