

# Home Improvements Set Record Pace

## DO YOU HAVE A GAS PERMIT?

Want Convenience?



### GAS FURNACE

No more "looking after" the furnace. G-E automatic heating ends fuss and bother.

for a FREE Estimate  
Phone 3-2615

### ASHBAUCHERS' TIN SHOP

Established 1915  
Heating, Roofing, Siding, Spouting, Air Conditioning  
116 N. 1st St. Decatur, Ind. Phone 3-2615

## Many Wiring Systems Now Out-Of-Date

Very often, homeowners continue using the same wiring system that they've been using for the past ten years, in spite of having added many new electrical appliances to their homes.

There's no doubt that electricity, through appliances and electrical utilization, has added much more comfort and convenience to our lives. But a home's wiring system must grow along with electrical use.

For one thing, the more appliances and uses for electricity, the more outlets will be needed, in the kitchen as well as in the living room, the bedroom, or, for that matter, on the patio or in the garden.

The versatility of appliances has created the need for convenient outlets and plenty of them. Such modern devices as "appliance center" for kitchens where four or five different appliances can be plugged in at the same time are among the more glamorous convenience outlets available.

To have plenty of outlets is fine. But remember, there must be enough circuits to supply all those outlets with sufficient current to operate several appliances at one time.

It all starts with the power supplied to your distribution center through the "Electrical Service Entrance."

Adequate Wiring or Full House-pow begins with the availability of at least 100 amperes of electrical current at either 120 or 240 volts. This will mean that up to 24,000 watts of energy may be utilized at one time.

If you add up the watts on the washing machine, dryer, toaster, iron, vacuum cleaner, refrigerator, lamps, radio, television and all other electrical uses, you will begin to understand why adequate home wiring is so important.

And when you count up those wattages, remember that the 24,000 overall wattage for your home must be distributed through all the circuits in the house. And each circuit must carry its own load. That depends, quite simply, on the size of the wire. For example, a "number 12" wire can carry 20 amperes of current whereas a "number 14" wire can carry only 15 amperes (the larger the wire, the smaller the number designation). Today, "number 12" wires are recommended throughout the house, enabling 20 ampere fuses to protect the circuits.

If you are concerned about the wiring in your house, call in an electrical contractor to check your entire system.

### Gym Use

Many builders are finding that gymnasium floors built of tough, resilient west coast hemlock last longer and wear better than many others.

### Satiny Surface

If you want wall paneling with a smooth, satiny surface, ask your lumber dealer to show you some west coast hemlock paneling.

## Owners Are Urged To Launch Jobs Early To Avoid Spring Rush

Home improvement activity, which ran at a record rate last year (in dramatic contrast to lagging housing starts) promises to outstrip even that rapid pace during the early months of 1961.

According to industry sources, home owners, contemplating repair, remodeling or modernization work, would be well advised to launch such projects at the earliest possible date in order to avoid the rush of home improvement jobs that can be expected to tax the capacity of many contractors and others involved, with the approach of Spring.

Right now in many a family circle one of the main topics of discussion is that "something must be done about the house" to bring it in line with expanding needs for living space or with modern standards of comfort, convenience and livability.

The honeymoon cottage that was ideal for two is found to be bursting at the seams with children, and extra bedrooms become a "must." Or the old fashioned house that was bought primarily because of its size must be modernized. Or even the almost-new house needs minor repairs.

### Plan Comes First

Basic to launching a successful program of home improvement is the formulation of a well thought out plan, in which the relative urgency of specific family needs and the maintenance of property value should be major factors in establishing a logical order of "priorities" within the scope of the family's financial resources.

Which is just another way of saying "put first things first" in planning home improvements.

Usually it makes sense to start by putting your house in tip-top shape. Take a long, hard look at everything about your house: siding, roofing, windows, doors, floors, stairs, walls, even the heating system. Head your list of improvements with necessary repairs. Then consider remodeling, enlargement and modernization.

Include your entire property in your plan. If more living space is your most pressing need, determine how you can make the best possible use of every square inch available. What about the unfinished attic or basement? Does either or both afford space for creating extra bedrooms or a recreation room? Is such a transition practical, cost-wise, and otherwise? Should you convert the garage into an extra room?

### Up-Dating Homes

Even the newest houses have some things that can be improved by remodeling. Changes in lighting fixtures and the addition of wall paneling, built-in wardrobe units and closet accessories, built-in dressing tables, desks and breakfast bars are additions that will help to keep a house up-to-date and enhance the convenience and pleasure with which a family will live in it.

On the score of modernization, take a close look at those two focal points of household activity: the kitchen and the bathroom. To what extent have either or both become outmoded by recent improvements or refinements in these two realms? What steps should be taken to up-date them or expand their facilities? How much will it cost? Once you have decided what should be done to improve your home, and in what sequence, you are ready to determine how much of the work you can or will want to do yourself, and how much will

require outside help, and of what kind.

If you plan extensive work, by all means avail yourself of competent advice. Consult an architect. Also talk to recognized contractors in your area. Local lumber and other building supply dealers can also be extremely helpful.

## Salvage Damaged Door by Covering

A door with damaged or unsightly panels can be modernized by a "face-lifting" operation that is simple and inexpensive. The result is a flush door with a smooth, durable surface without any dust-catchers.

Fill the panel indentations with insulating board of a thickness that will make it flush with the wooden borders of the door. Then cut sufficient 1/4" tempered hardboard to cover the entire door. One, two or three pieces are suggested. If two or more panels are used, the adjoining edges should be beveled to form a V-joint. Other edges should be beveled also. Remove all hardware from the door.

Use tileboard adhesive for attaching both the insulating board filler pieces and the new hardboard surface. Apply weights to assure a good bond. Finishing nails can be used instead of weights to hold the panels firm while the glue sets.

Sand the edges of the re-paneled door and attach the hardware. It will be necessary to relocate the door stops and striker plate, as the door will be slightly thicker. A one-sixteenth inch clearance should be left between the door and the stop at the hinged edge and between door and frame.

The remodeled door may be lacquered, varnished, painted or enameled.

## Apply Peg-Board Over Glass Wool To Reduce Noise

Peg-Board backed by glass fiber wool blanket can be used successfully in recreation rooms and elsewhere to reduce noise.

The pleasing appearance, durability and sound-absorbing qualities of Peg-Board in combination with glass fiber wool blanket make this construction desirable. Readily painted with a roller, the surface is dent and wear-resistant and may be washed repeatedly, additional advantages over other acoustical materials.

Installations of this type also have been found successful in public places such as schools, theaters, music halls, bowling alleys and institutions where noise reduction is important.

## Brighten Corner In Attic For Boy

For a children's playroom, a den for dad or 12-year-old Jim, there's nothing like a corner in an attic. There's no need to refinish everything at once; that can come later. Many lumber dealers recommend an embossed, low-cost hardboard for such improvements. Panels go up right over insulated studs, and they can easily be given a two-tone finish. They'll wear well. Lumber dealers have many good ideas about low-cost attic fix-up.

## New Effects By Switching Panel Uses

"Switching" is a favorite pastime today, not only among teenage girls who like to wear their sweaters backward, but even among imaginative builders and architects who have achieved some novel results with materials used "differently."

For instance, a Houston architect, wanting an abruptly different texture in one exterior portion of his own new house, got the effect he wanted with 1/4" Peg-Board panels which were put up over insulating sheathing treated with black asphalt. Holes in the perforated board, with that background, appear infinitely deep.

Exterior Siding Indoors

Exterior siding has moved indoors in many contemporary-styled homes, too.

A popular vented siding has been used on a porch and in some cases in an entry hall. One contractor applied this vertically for a most unusual effect next to a bar. Another put it up conventionally over a pass-through to the kitchen.

In recreation rooms, where a masculine, rugged paneling is wanted, architects have been specifying an exterior hardboard panel. Another exterior hardboard siding, which rose to quick popularity first in the western states, has a ridged surface. Its mild striations have been seen as wainscots in children's rooms and as an accent wall in the living room.

Peg-Board for Soffits

The same Houston architect who used Peg-Board panels to side his own home specified them for wide-overhanging soffits. A window wall adjacent to the overhang makes visible the interior ceiling, acoustical tile, to give the illusion of a continuous ceiling extending from the indoors to the outdoors, or vice versa. Incidentally, the thousands of holes in the 1/4" Peg-Board soffits have a function—to ventilate the attic.

Another reason for "switching" materials is to save money. Examples are low-cost hardboard for protected exterior soffits, porch and carport ceilings. There they serve better than the conventional material, and at a fraction of the cost.

## Build Chute To Basement For Laundry

The most important point in putting a laundry chute from a first floor closet to the basement is to select the proper location so pipes and other obstacles do not block the way.

After planning the route, saw out a section of the flooring and sub-flooring between the joists. For easy handling, make the chute in two sections—one extending from the basement ceiling to a handy height in the closet, and the other leading from the ceiling to a point over a receiving basket, box or table below.

Framing for the chute will consist of straight 1 by 2-inch lumber. Two pieces are used at each exterior corner of the elongated box, with smooth-surfaced 1/4" presdwood, used for the sides nailed to the wood and the wood strips nailed to each other.

Splinter-free hardboard makes an ideal surfacing for the chute. Its smooth side should face in to provide a snag-proof slide for the clothes.

Cutouts in the floor should be made to accommodate the outside framing of the chute. Install the lower portion of the chute first, nailing it to the floor joists. The upper section, wedged in the floor hole, may need no further support.

For better appearance, fill in the space between the chute's corners with 1x2-inch lumber at the floor level. Top this kickstrip with quarter round molding to cover irregularities and to discourage the collection of dust.

In the closet section, protect garments from snagging by simply nailing another layer of splinter-free presdwood over the framework. Make a hinged top for the chute by framing a piece of hardboard so the wood fits inside the chute opening. To complete the job, attach a door pull.

### Warm Coat

Wood siding is a natural insulating material, the West Coast Lumbermen's Association points out. An inch of wood is equal to six inches of brick as an insulator. Douglas fir, western red cedar and west coast hemlock siding all have this insulating value.

### Exterior Trim

If the body of your house is a dark color, when planning a white trim be sure to order a sash and trim paint. This type dries hard and cannot chalk as ordinary exterior paints do.

## Create A Hallway In Kitchen, Living Room Under \$25

To create a hallway in the kitchen or living room at the entry from outside, simply build a stud wall from floor to ceiling and line both sides with an attractive paneling. Inexpensive and long wearing, the hardboard will provide a much-needed hall with little effort. In the kitchen, it can be used for hanging coats and umbrellas. You have a choice of four colors in walnut and three in cherry. The entire job should cost less than \$25 if you do it yourself.

## Novel Room Divider Has Louvers

Simplified design and modern building materials make it relatively simple to install a divider between living and dining rooms.

One of the various types is quite "different" from the conventional. It consists of several vertical louvers suspended between the floor and a horizontal framing member six feet high. The louvers may be made of 1/4" hardboard that's smooth on both sides.

Six to eight inches wide, each louver has a pivot made by nailing a one-inch half round on each side. Ends of the half rounds extend above and below the louver to fit into holes of 1 1/4" diameter which have been bored in the supporting members. The louvers may be inserted and removed easily if the hole at the top is deep and the one at the bottom is shallow.

Primed and colorfully painted, the louvers simply are turned by hand to afford ventilation or privacy.

For home owners who prefer a room divider with storage, an interesting combination has a cabinet below and adjustable louvers above. Hardboards over a lumber framework make excellent cabinets. Some come woodgrained, while the others can be painted or enameled as a room accent. Sliding doors usually are preferred in such an installation. Make them from tempered hardboard or Peg-Board resting in metal or wooden tracks.

### White Fir

One of the few non-resinous woods, white fir, is gradually coming into its own as a fine construction and finish lumber. It is light in weight, but strong, and is widely used in home construction.

### Discovery

You'll be glad you discovered west coast hemlock for your wall paneling. It is the wood with the champagne tones and the smooth satiny finish.



The Perfect Pair for Home Decoration

Rubberized WALLHIDE Wall Paint SATINHIDE ENAMEL

BOWERS HARDWARE CO., INC.

"Free Parking While Shopping in Our Store" PITTSBURGH PAINTS keep that color looking longer

## LOOK! DeWALT SAW

DEMONSTRATION by FACTORY REPRESENTATIVE

THURSDAY NIGHT, FEBRUARY 16—7:00 P.M.

at the DECATUR COMMUNITY CENTER

REFRESHMENTS WILL BE SERVED

DOOR PRIZE



## HABEGGER HARDWARE

"WHERE OLD FASHIONED COURTESY PREVAILS" 140 MONROE ST. PHONE 3-3716 DECATUR, IND.

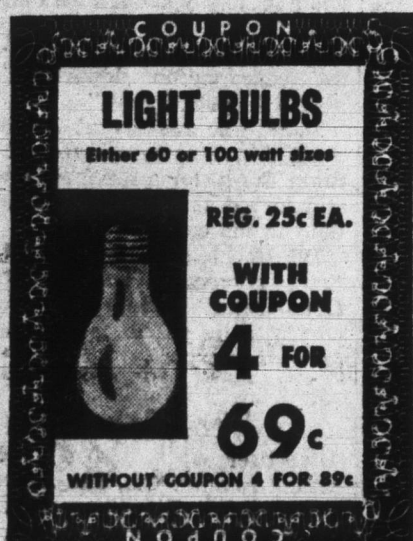
## February Specials! at ARNOLD LUMBER CO., INC.

### SATISFACTION!

We want you to be completely satisfied with our merchandise and service. We think you will be happy because we are proud of the fine quality of merchandise in our store.

HEAT LAMP OR FLOOD-LITE REFLECTOR REG. \$2.89

\$2.35



Just Arrived! Decatur's Newest PULL DOWN LIGHT FIXTURES

Brass or Chrome. A Real Nice Selection! \$8.88 up

REG. \$1.29 2 FT. x 4 FT. PEG BOARD \$1

ADJUSTABLE Ironing Board REG. \$7.95 \$5.88

## Arnold Lumber Co., Inc.

"Your Complete Builders Supply Department Store" WINCHESTER STREET at ERIE R. R. CROSSING

perfect!



...for floors or steps...on wood or cement!

DURABLE TOUGH! BOWERS HARDWARE CO., INC. "Free Parking While Shopping in Our Store" PITTSBURGH PAINTS keep that color looking longer

## BUILD FOR A Lifetime WITH Ready-Mixed Concrete!

HELPS YOUR CONTRACTOR GIVE YOU A BETTER JOB With Less Fuss . . .

For dozens of improvements around your home or place of business, no other material offers the service and economy of fire-safe, permanent concrete. If you are planning a new walk, driveway, foundation, porch or garage floor—build it the convenient, low cost way with READY-MIXED CONCRETE from . . .

## DECATUR READY-MIX CORP.

PHONE 3-2561

E. OAK & FARNAX STS.

DECATUR, IND.

## For Quality Construction USE YOST READY-MIX CONCRETE

It's the thing to do if you wish to save time and money on concrete work. We deliver it when you say and in any quantity. Every load is accurately proportioned for the use intended and it is delivered properly mixed.

## 10% Discount ON ALL READY MIX CONCRETE

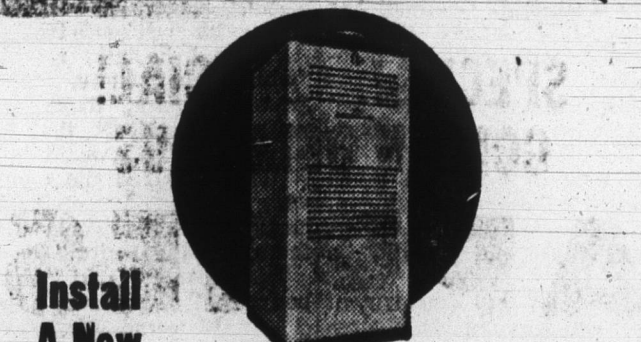
CALL 3-3114

GET OUR PRICES — PROVE FOR YOURSELF YOU GET THE BEST FOR LESS!

## Yost Gravel-Readymix, Inc.

Phone 3-3114 Decatur R. R. 1

## Get ready for winter now!



Install A New OIL or GAS

### AMERICAN FURNACE

Get complete home comfort with AFCC COMFORTMAKER winter air conditioning — Temperature control — Humidity control — Filtered Air — Low cost operation.

For a free estimate — Call

## HAUGKS HEATING — PLUMBING — APPLIANCES AIR CONDITIONING

209 N. 13th St.

Phone 3-3116