



Sitting in the shade afterward is one of the few nice things about mowing a lawn. This handy shelter has lots of space for a power mower, and provides shade for resting afterward. It's made from fir plywood.

Mower Shelter Doubles as Sunshade

While it's true power mowers have taken a lot of the distaste out of a tedious job, they have one drawback: they're a lot heavier than the old hand models if you have to carry them in and out of the garage or basement each time they're used.

Here's an inexpensive mower port that will solve your storage problem and add to the appearance of your yard. If you're reasonably handy with hammer and saw, you can build it yourself with a few simple tools.

Room to Relax

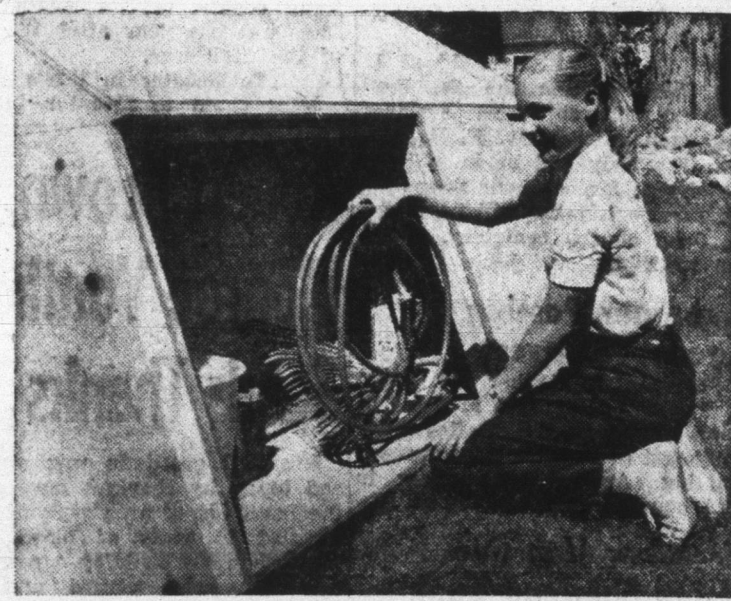
The hardest part of the job is digging post holes for the vertical framing. After that's done, a few

saw cuts on some big 4x8-foot sheets of exterior fir plywood and you're ready to nail it together.

This unit is more than just a storage port, though. There's also plenty of room under the shady front canopy for a lawn chair.

You can relax with a tall glass of lemonade and admire your new-mown lawn after the job's done.

A free plan for this mower port is available from the Douglas Fir Plywood Association, Tacoma 2, Washington.



There's a big storage space in back of the mower shelter for rakes, hose and the other tools necessary to keep the lawn growing right.

Home Owners Approve

Cool Ray
ALUMINUM
AWNINGS

for their BEAUTY -
for their VALUE -
for their QUALITY -
for the COMFORT.
they give year 'round

Once They're Up - You
Never Take Down!

- 16 BEAUTIFUL COLORS
- DOOR CANOPIES
- PATIO COVERS
- WINDOW AWNINGS

FREE ESTIMATES!

NO
MONEY
DOWN

YEARS TO PAY!

KOHNE
Window & Awning Co.
711 Winchester Street
PHONE 3-2259

Old-Fashioned Decor Adds Spice to Kitchens of Today



A modern kitchen can be functional but fun if it's carefully planned around modern electric appliances such as refrigerator-freezer, dishwasher, and range, then sparked with accessories from the family's favorite period. This kitchen combines modern efficiency with furbelows from the Gay Nineties.

New, time-saving appliances teamed up with the richness of natural wood cabinets, doors, and windows, then spiced with a collection of accessories such as Gay Nineties gimcracks can make an efficient but attractive kitchen.

For efficiency, consider modern electric appliances such as refrigerator-freezers and automatic dishwashers. They dress up any kitchen, and save the homemaker many extra hours.

For old-fashioned charm plus modern design, enclose shelves with louver doors, then add a Dutch door between kitchen and back yard to keep toddlers and pets in (or out). Short, swinging doors between kitchen and dining room will screen cooking activities without isolating the housewife.

Eliminate Clutter
Louvers, panel doors, and windows of ponderosa pine lend the warmth and texture of wood to kitchens of any period. Factory-built, they are available, ready to install, at local building material centers. They can be stained or painted to blend with any kitchen.

An automatic electric dishwasher belongs in every modern

kitchen, no matter what its decor. It eliminates the old-fashioned clutter and drudgery of unwashed dishes because dirty dishes and kitchenware go right into the dishwasher as soon as used, to be washed and rinsed thoroughly, then hot-air dried to sanitary brightness.

Save Space

A new electric refrigerator-freezer is another time and trouble saver in a modern kitchen. With thin walls, made possible by new, thin insulation, and squared-off corners to use all available space, a new electric refrigerator-freezer provides more food storage space in the same floor area occupied by older, less roomy refrigerators. Generous freezer sections and specially cooled and humidified fresh food compartments preserve more food longer and help decrease the number of weekly shopping trips.

As for accessories such as Gay Nineties gimcracks, forage family attics and cellars, antique and second-hand shops, and white elephant and rummage sales. Colorful kitchen whimsies might include mustache cups, kerosene lamps, Victorian clocks, and even a rocking chair if there's room.

'Space Age' House Plan Offers Beauty of Traditional Styling

Today's most popular home designs are traditional in appearance, yet offer floor plans that fit the demands of modern living and growing families.

This design, by Home Planners, Inc., of Detroit, neatly fits both requirements. Its exterior is subtly Colonial, while its floor plan is rambling and roomy.

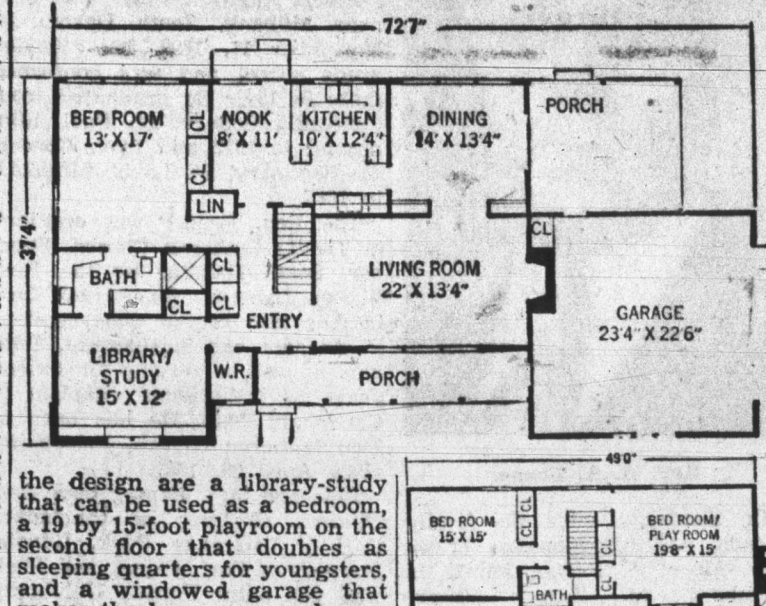
Viewed from the street, the house takes on a mansion-like appearance, thanks to its flowing lines and broad expanse of roof.

The architects specify asphalt shingles for the roof to provide the rich texture that complements traditional architecture. Colors available in asphalt shingles also were a factor. A blend of deep green, gray, or brown is recommended to provide a key for other exterior colors.

For windows, a unique type that is a combination of traditional and modern is specified. These are windows of ponderosa pine that look like traditional styles when closed, yet become modern awning windows when opened. The wood frames and sash are in keeping with Colonial design.

To insure comfort and economy throughout the year, the architects recommend that the house be thoroughly insulated with mineral wool in walls, ceilings, and floors, and suggest that enough insulation be installed to permit the economical operation of air conditioning and electric heating if these are desired in the future.

Among the other features of



the design are a library-study that can be used as a bedroom, a 19 by 15-foot playroom on the second floor that doubles as sleeping quarters for youngsters, and a windowed garage that makes the house appear larger.

Additional details, blueprints, and specifications may be obtained from Home Planners, Inc., 16310 Grand River Ave., Detroit, 27, Mich. Refer to design SR/E763.

FHA Says Climate Decides Life of Roof

Climate is the major factor influencing the life of a roof of asphalt shingles, according to reports made recently by the Federal Housing Administration.

A roof of 210-pound asphalt shingles, says FHA, generally will last 20 to 25 years in Northern states, 15 to 20 years in Central regions, and about 10 to 15 years in the South.

The statements were made by FHA in denying that homes built under FHA-insured mortgages should be required to have roofs bonded for 20 years regardless of location.

Reroofing Often Goes With New Addition

Look carefully at the roofing material on your home if you plan to add a room or build a new wing.

A mistake many families make is to apply new roofing on an addition without considering the age, condition, and appearance of the main roof.

A complete new roof for a house, applied at the same time the new room or wing is being built, helps unify the addition with the rest of the house. It increases overall house value, and can be financed with the same loan used to construct the addition.

ROAD TO MOON

Enough fir plywood produced in 1959 to make a strip four feet wide that would stretch to the moon. There would be enough left over for an earth girdling belt 20 feet wide.

ROOF FOR NEW YORK

A roof for all the five boroughs of New York City could have been built from the fir plywood manufactured in 1959.

Clubhouse Modernized For Youngsters

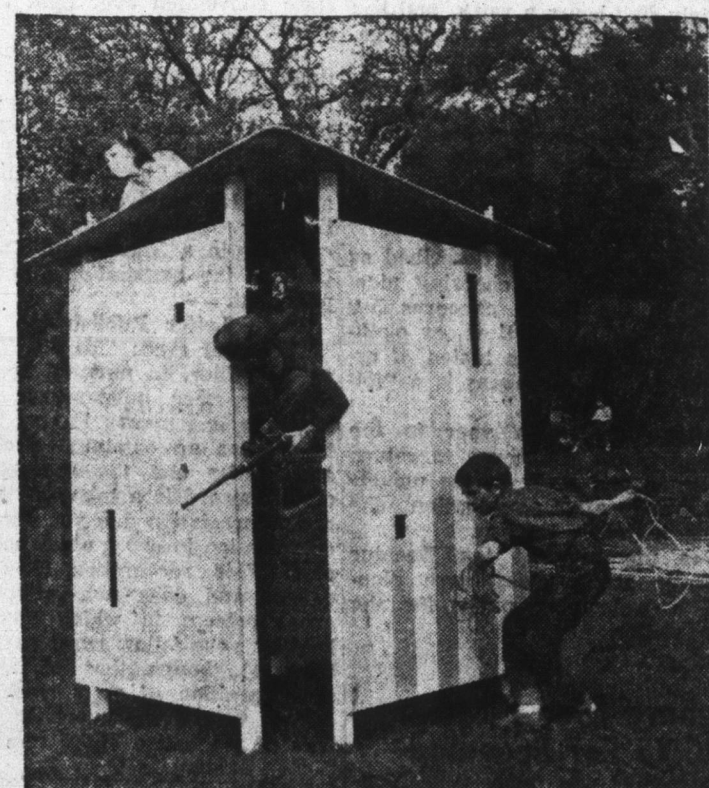
The clubhouse youngsters used to build in vacant lots, behind the barn or in nearby woods is as American as the plains buffalo and nearly as extinct. It's pretty hard to win permission for a lopsided shack in today's limited back yards.

Here's an attractive structure that has more possibilities than even the old clubhouse and yet is good looking enough for display anywhere. It's one of five "plywood playmates" developed by Family Circle magazine to help put some old-fashioned fun into the lives of modern youngsters. Fittingly enough, it's called the Clubhouse.

The structure was designed by San Francisco landscape architect Douglas Baylis. Editors of Family Circle spent more than a year sifting designs. It can be built in about six hours, from lumber framing and two thicknesses of exterior type fir plywood, a material made with completely waterproof glue. Materials come to less than \$85.

The Clubhouse has a roof and a "mezzanine" that doubles as a firing platform when the structure is used for a blockhouse during Indian unrest. Young defenders can peer secretly through slits in the side panels and crawl up through the holes in roof and

mezzanine. A free construction plan is available from the Douglas Fir Plywood Association, 1119 A Street, Tacoma 2, Washington. Ask for the Clubhouse.



Youngsters can play house, indulge their imaginations and build their bodies, too, in this attractive modern version of the unsightly old clubhouse. The two-level play structure, designed for Family Circle magazine, can be built for less than \$85 and will provide years of fun. It's assembled from exterior type fir plywood, made with waterproof glue, and lumber framing. A free plan is available from Douglas Fir Plywood Association, Tacoma 2, Washington.

Good Building Materials Save Money in Long Run

Savings from low home operating expense justify spending more money initially for top-quality building materials, according to A. M. Watkins, author of a new, comprehensive guide for families planning to build or buy houses.

"Only about 5 to 7 per cent more money spells the difference between poor materials and first-class ones. But annual savings and immensely increased performance return your money many times over," he says.

Watkins, whose guide is entitled "How to Judge a House," rates inadequate insulation as one of the five biggest causes of high upkeep expense.

He says, "When a typical 1,200-square-foot house is really well insulated, total heating and cooling bills can be reduced to an average of \$130 a year, or less than \$12 a month, nearly anywhere in the continental U. S. Don't skimp on insulation. In general, the kind most recommended is mineral wool."

The four other main causes of high upkeep are poor heating, inadequate wiring, termites and decay, and low-quality hot water heaters.



Workman installs comfort and economy—mineral wool insulation—in the walls of a new house under construction.

In "How to Judge a House," Watkins gives a special section to the eight most common flaws encountered in old houses for sale and how to spot them. Also included are the five basic tests of a good floor plan, tips on getting a sound structure, a guide to air conditioning, and what to know about FHA's rules.

The booklet is available for \$1 from the publisher, All About Houses, Inc., 27 Rittie St., Piermont, N. Y. It includes a 120-point check list.

Your Builder Will Do Quality Work

WITH

YOST READY-MIX CONCRETE

10% Discount
ON ALL READY MIX CONCRETE

CALL 3-3114

GET OUR PRICES — PROVE FOR YOURSELF
YOU GET THE BEST FOR LESS!

Yost Gravel-Readymix, Inc.

Phone 3-3114

Decatur

R. R. 1

TENTS FOR RENT



WE RENT

- Large Tents
- Small Tents
- Canopies
- Camping Tents
- Bleachers
- Tarpaulins

HEADQUARTERS for . . .
Tarpaulins — Awnings — Truck Covers —
Boat Covers — Swimming Pool Covers —
Camping Tents — Flags — Banners!

FORT WAYNE
TENT & AWNING CO.

Lower Huntington Road—Fort Wayne, Indiana

Phone Sherwood 3707

BRYCE DANIELS, Local Representative, Phone 3-3539

Patching Worn Roof Is Waste of Time

Patching a worn-out roof is like eating peanuts—once started it's hard to stop. As soon as one leak is repaired, another may open up. This is often the result of walking on the old roof to repair it.

Instead of patching a leaky roof, you can put a new roof of asphalt shingles on right over the old one. Asphalt shingles are low in applied cost, long-lasting, and weatherproof. They are available in many colors to blend or contrast with the color scheme of your house.

BIG INCREASE

In 1950, the average new home contained about 550 sq. ft. of fir plywood. The increasing use of this cost-saving material for roofs, floors and high-strength walls has brought the figure to 2500 sq. ft. for 1960, according to the Douglas Fir Plywood Association.

STRONG GLUE

Fir plywood which bears the testing stamp of the Douglas Fir Plywood Association, the industry's watch dog of quality, must be made with glue that is stronger than the wood.

DECATUR READY-MIX CONCRETE

PROVED and APPROVED
for Better Construction

DECATUR READY-MIX, CORP.

E. Oak & Fornax Sts.

Phone 3-2561

Do you feel the heat HERE, too?

Stop losing income in hot weather! G-E Air Conditioning increases summer-time business—pays for itself!

Packaged-AIR CONDITIONING

- Quick and easy installation.
- G-E's unique all-in-one refrigeration system seals in savings.
- Five-year G-E Plus-Value Protection Plan.
- Terms to suit your budget.



GENERAL ELECTRIC
ASHBAUCHERS' TIN SHOP

ESTABLISHED 1915
HEATING—ROOFING—SIDING—AIR CONDITIONING
SPROUTING—AWNINGS—FANS

116 N. First St.

Decatur, Ind.

Phone 3-2615