

Your Builder Will Do Quality Work

WITH

YOST READY-MIX CONCRETE

10% Discount

ON ALL READY MIX CONCRETE

CALL 3-3114

GET OUR PRICES — PROVE FOR YOURSELF
YOU GET THE BEST FOR LESS!

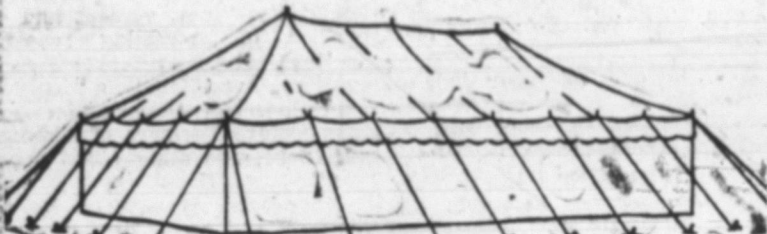
Yost Gravel-Readymix, Inc.

Phone 3-3114

Decatur

R. R. 1

TENTS FOR RENT



WE RENT

- Large Tents
- Small Tents
- Canopies
- Camping Tents
- Bleachers
- Tarpaulins

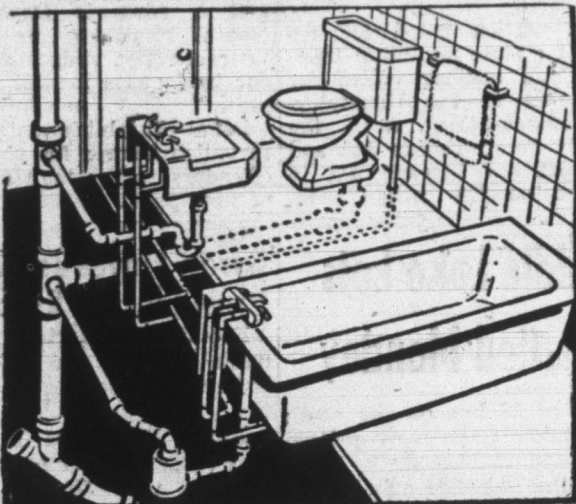
HEADQUARTERS for . . .
Tarpaulins — Awnings — Truck Covers —
Boat Covers — Swimming Pool Covers —
Camping Tents — Flags — Banners!

**FORT WAYNE
TENT & AWNING CO.**

Lower Huntington Road—Fort Wayne, Indiana
Phone Sherwood 3707

BRYCE DANIELS, Local Representative, Phone 3-3539

MODERNIZE YOUR BATHROOM!



Increase the value, beauty and convenience of your home with lovely new bathroom fixtures.

BUDGET PAYMENTS
EASILY ARRANGED!

FREE
ACCURATE
ESTIMATES

HAUGK

HEATING, PLUMBING, APPLIANCES &
AIR CONDITIONING

209 N. 13th St.

Phone 3-3316

Hungrier, Happier, Healthier, Home

Air Conditioning Today Keeps Doctor Away

Summer comfort is merely a bonus in an air-conditioned home, say families who have cooling systems.

The real benefit is better summertime physical and mental health. Air conditioning eliminates summer slump in appetites for the entire family. A cool kitchen makes cooking hot, nutritious meals a joy instead of a chore. The oven comes into use more often, and it's the pastry

that bakes, not the cook. Controlled temperatures and humidity, plus clean, filtered air provide relief for victims of asthma, hay fever, heart trouble, and heat rash.

Clean air, minus pollen, dust, soot, and the germs that often accompany them, helps cut down respiratory illnesses. Better appetites, better sleep, and the comfort of cool, even temperatures inside the house make heat-wave irritability a



Hot Meals

thing of the past. Summer-long family relations are happier.

Today, the average family can afford the benefits of air conditioning. In a clean, dust-free house laundry and cleaning bills are lower, and furniture upholstery stays cleaner. Better health means lower doctor bills, and less need for expensive drugs and medicines. These savings help greatly to offset the cost of operating a cooling system. Most important to air con-



Restful Sleep

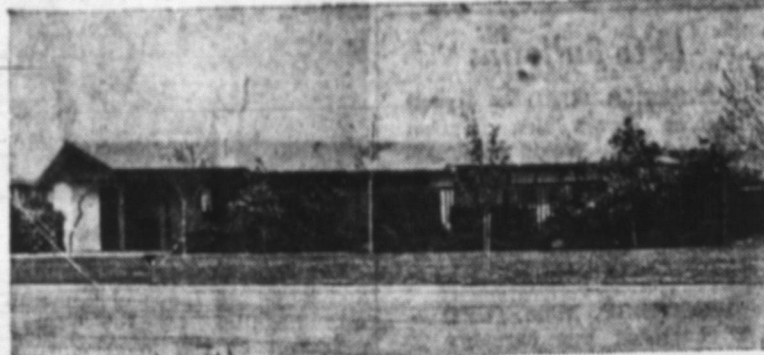
ditioning economy and efficiency is proper insulation to keep summer heat out of the house. Mineral wool installed in recommended quantities in wall, ceiling, and floor cut both the cost of the cooling equipment need and expense of operation. A further benefit of insulation is a reduction in the cost of winter heating fuel, and a healthier, draft-free house in cold weather.



Fresh Air

Orientation Does It

Cooling Best When House Plays Peek-a-Boo With Sun



Air-conditioned house in Austin, Tex., is scientifically oriented to keep sun's heat off walls, windows, and roof. Note heat-reflecting light-color asphalt roofing, wide roof overhang, and shrubbery to provide the protection of shade.

Orientation of a new home on its site is one of the most important factors for comfortable, economic air conditioning. This means placing the house so that in summer the mid-afternoon sun cannot shine directly on windows, and the late afternoon sun strikes areas without windows.

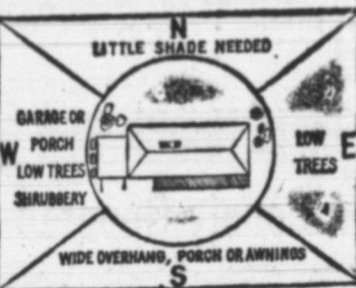
Careful orientation, used in conjunction with recommended amounts of mineral wool insulation, proper roof design, and adequate shade can substantially reduce not only the cost of air conditioning equipment, but its operation as well.

It's rarely possible to orient a house perfectly because of lot shapes and contours, but here are some general recommendations:

1. Broad sides of the house should face north and south.

2. Garage, porch, or utility room should be on the west end of the house to take the brunt of the late afternoon sun.

3. The roof should have wide overhangs on its south side to shade walls and windows, and should be constructed to permit adequate air circulation in and out of the attic. White or light-color asphalt shingles on the roof reflect much of the sun's heat, yet provide a soft rugged texture without harsh glare.



This orientation works best in most climate zones of the U.S.

4. The south wall is the best place for large windows. The summer sun is high in midday, and the roof overhang keeps sun off south windows.

5. Shade trees are most effective on the east and west sides to block low sun in morning and late afternoon.

6. Shrubby, high fences, and trellises at the west end of the house will block much of the late afternoon sun. All of these in themselves will not provide efficient, low-cost air conditioning unless the house is well insulated. Today, mineral wool contractors can provide exactly the proper amounts of insulation in walls and ceilings of a house that is to be air conditioned.

READY-MIXED CONCRETE IS
TAILORED FOR THE JOB

**DECATUR
READY-MIX
CONCRETE!**

IS HIGH-QUALITY
CONCRETE,
SCIENTIFICALLY
DESIGNED AND
MIXED TO
FIT THE
SPECIFICATIONS
FOR THE
PARTICULAR JOB

**DECATUR
READY-MIX
CORP.**

E. OAK and FORNAX
Phone 3-2561

Building?

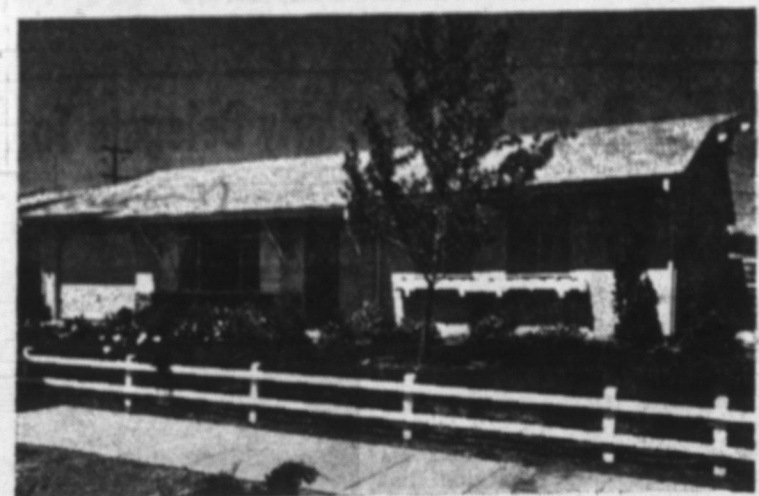
Insulate Now For Comfort In Future

If you're planning to remodel or build a home, yet feel you can't afford air conditioning right away, here's some good advice.

Install proper insulation for air conditioning during construction. Later, when you're financially ready for air conditioning, an important part of the job is done.

The extra mineral wool needed for efficient and economical home cooling costs no more to install than lesser amounts of insulation. And the extra cost of the thicker batts or blankets will more than pay for themselves in savings on heating fuel. To be sure of obtaining insulation that meets the performance requirements of the All Weather Comfort Standards developed by electric utilities and manufacturers of air conditioning and electric heating equipment, insist on mineral wool batts or blankets marked with "resistance" numbers. These are: R-19 for ceilings, R-11 for walls, and R-13 for floors.

Cooler House Under the Sun Has Heat-Reflecting Roof



Light-color asphalt shingles reflect heat, help cut costs of air conditioning homes such as this one in southern California.

Good, economical air conditioning in a home depends to a great extent on the roof.

A roof such as the one on the house in California, above, has light-color asphalt shingles that reflect much of the sun's heat, and wide overhangs that shade walls and windows during the hottest part of the day.

It also is a pitched roof that

provides an attic. Hot air escapes through louvers in the gable ends below the roof before it can penetrate into living quarters below.

Light-color asphalt shingles are popular for air-conditioned houses because they reflect heat, yet provide a glare-free textured surface that is impervious to weather.

Plan Details Tool House At Cottage

People with permanent summer cottages may be interested in building a garden and tool house while vacationing. This can be done with common building materials, using an easy-to-follow plan.

The house, eight feet square, may be devoted to tool storage and workshop, a playhouse or even a guest house. Directions show how to build a bigger house, if desired. Durability and efficiency are features of the plan, which suggests the use of panelgroove, an extremely durable exterior siding. The dense paneling takes a handsome paint job that lasts longer than on wood. Inside, peg-board panels are included to permit easy organization of tools for storage.

A plan with full details may be obtained by sending 50 cents in coin to the Home Service Bureau, Suite 2037, 111 W. Washington St., Chicago 2, Ill., and requesting Plan No. 51.

Versatile Peg-Board Increases Storage

For additional garage storage space, line one wall with quarter-inch peg-board, which is strong enough to support lawn mowers, motors and other heavy-duty equipment. Shelves can be added for other miscellaneous items. Cut the peg-board into one foot strips, and line the wall at a height of five feet. The panels can be painted with a roller.

Free Plan Tells How To Build Poolside Cabana

With the spreading craze for home swimming pools, wouldn't you like to have a portable cabana to end the nuisance of in-door changing to and from swimming suits?

Following a free plan available from the Home Service Bureau, you can build one that is most attractive. Here are some of the features:

Two benches that make changing easy, polka dot decor, peg-board sides which provide non-see-through ventilation, attractive awnings that let in air and light, a swing-aside curtain for privacy. Besides, the youngsters can hang their duds right on the peg-board walls.

Mobility is on the principle of a wheelbarrow, and one adult or two husky boys can wheel the poolside cabana to location.

For a copy of the plan, write a postal card to the Home Service Bureau, Suite 2037, 111 W. Washington St., Chicago 2, Ill., and request No. AE-370.

Baby Shoes

Baby shoes are seldom worn out—but still it isn't a wise idea to pass them on to other children in your family. Since each child wears shoes differently, another child's shoes might cause some foot ailments or deformities.

NEW PAINT FOR 'PROBLEM HOUSES'



PATENTED TO RESIST:

- BLISTERING
- CRACKING
- PEELING
- CHALKING

Burdall "ON-TITE" NEW MIRACLE HOUSE PAINT

Give your house the marvelous protection of Burdall ON-TITE . . . banish your old fears of blisters, peeling, staining and cracking! Burdall ON-TITE takes a firm hold on your house . . . its patented formula gives a hard smooth film that stretches the years between paint jobs! ON-TITE is easy to apply . . . one coat does the job in most cases. If you have believed that your house is a PROBLEM PAINT JOB, you're due for a pleasant and profitable surprise when you paint with Burdall ON-TITE!

HABEGGER HARDWARE

"WHERE OLD FASHIONED COURTESY PREVAILS"
140 MONROE ST. PHONE 3-3716 DECATUR, IND.

PROOF—THAT HUMPHREY



ARE
TODAY'S
BEST
BUY

See these Features:
★ REMOVABLE SILL FOR EASY, QUICK CLEANING
★ MAINTENANCE FREE, NO PAINTING, NO STORING REQUIRED
★ FLOATING CHANNEL ASSURES SMOOTH ACTION

★ WILL NOT RUST
★ MODERN STREAMLINED APPEARANCE, NO UGLY SCREWS SHOW
★ CUSTOM-MADE TO INSURE A PERFECT FIT

CALL FOR FREE ESTIMATE

**KOHNE
WINDOW & AWNING
CO.**

711 Winchester St.
Phone 3-2259
John Kohne

IF YOU ARE BUILDING

- Kitchen
- Bathroom
- USE CERAMIC TILE
- Patio and Hall
- Slate or Terrazo
- WE INSTALL —
- Windows & Glass Doors
- Marble Window Sills
- Flower Wells
- Stone Fire Places

See us for Complete Building Estimates.

WEMHOFF MARBLE & TILE

Phones 3-2060 — 3-3430 — 3-3433 Highway 27 - 33 N

"42 Years Experience"

NEW... Super Kem-Tone COLOR HARMONY GUIDE



OVER 1500
NEW COLOR
IDEAS FOR
DECORATING
YOUR HOME...

We'll lend you this
amazing Guide...
FREE!

Takes the
guesswork
out of
decorating!

You will know for sure that the colors
you put together in a room are right!

THIS IS A SPECIAL COLOR SERVICE OF OUR STORE!



America's
favorite
interior
paints...



Super Kem-Tone
LATEX WALL PAINT
\$6.39 gal.

KEM-GLO.
AMURA ALKYL ENAMEL
\$2.85 qt.

Kocher Lumber & Coal Co.

102 N. 1st St. Phone 3-3131

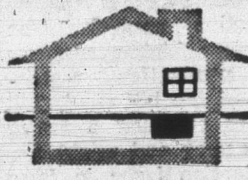
WHAT KIND OF A HOUSE DO YOU HAVE?



(A) BASEMENT



(B) BASEMENTLESS SLAB CONSTRUCTION



(C) CRAWL SPACE

THERE'S A G-E HOME COOLING UNIT FOR ANY TYPE OF HOME



ASHBAUCHERS' TIN SHOP

HEATING, ROOFING, SIDING, SPOUTING, AIR CONDITIONING

Established 1915

PHONE 3-2615

(A) G-E Upflow Unit. If you have a basement, the G-E Upflow Unit is easiest to install and gives most effective results at lower cost.

(B) G-E Downflow Unit. If you do not have a basement, the compact G-E Downflow Unit is especially designed for your home. Ideal for slab construction.

(C) G-E Horizontal Unit. If space is limited, the G-E Horizontal Unit easily fits the crawl-space, attic or garage; takes no floor space at all.