

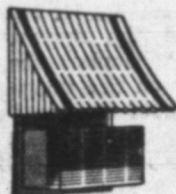
Furniture Polish

Add a teaspoon of vinegar to each cup of furniture polish to increase its brilliancy. This will prove equally effective with shoe polish.

Air
Conditioning
works better
with

NAVACO
AWNINGS

- Shades room units from sun.
- Protects windows — yet ventilates to remove hot air pockets.
- A style to compliment your home architecture.
- Choice of colors and sizes — baked enamel aluminum or rigid vinyl.



ASK YOUR AIR CONDITIONING ENGINEER ABOUT THE DIFFERENCE NAVACO AWNINGS WILL MAKE! Send For Free Literature

NAME _____
ADDRESS _____
CITY _____ STATE _____

ARNOLD LUMBER CO., INC.

"Your Complete Builders Supply Department Store"
WINCHESTER STREET
at ERIE R. R. CROSSING
PHONE 3-3108

Screens Keep Bugs Outside

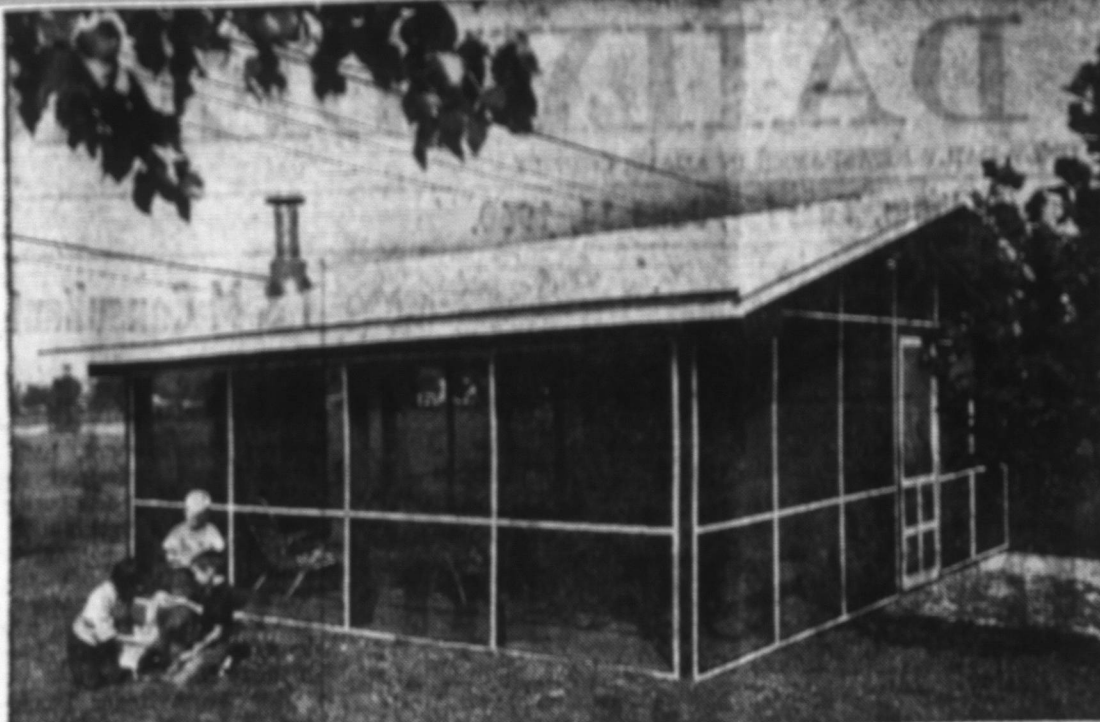
If your outdoor barbecue or patio party is sometimes attended by mosquitoes and other insects, you would probably like to "screen out" these unwanted guests. Here's a carport-summer house which does it for you.

A shelter for your car during the winter, this carport becomes a pleasant outdoor room during the warmer months. The 20x20-foot structure has fiberglass screening on the ends and sides, a concrete slab floor, and a sturdy fir plywood roof. One side is covered with plywood storage lockers which give you 256 cubic feet of storage space for gardening, athletic and picnic equipment.

Fireplace
A pre-fab fireplace provides a nice source of warmth on cool evenings, and can also be used as a spare barbecue. There is room for a small barbecue party even when the car is inside the carport.

The main door is made in three parts, with one section acting as the small entry door. All three sections fold back to allow a full-size opening for the car.

The screening lets the cool



Fiber glass screening and big sheets of exterior type fir plywood simplify construction of this attractive summer house. The screen keeps out unwanted insect guests, the plywood makes finishing a simple chore.

breeze filter through, but stops all insects. The plywood roof has a wide overhang to shield the interior from the hot sun or the rain. The framework of the structure is large, preservative-

treated poles which are set deep into the ground. This provides sturdy but economical construction.

Drawings Available
A complete set of construction

drawings for the Carport-Summer House are available by sending \$1.00 to American Home, The American Home Building, Department CP, Forest Hills 75, New York.



The summer house is attractive from outside as well as inside. This view shows the wide expanse of screen to keep insect invaders out.

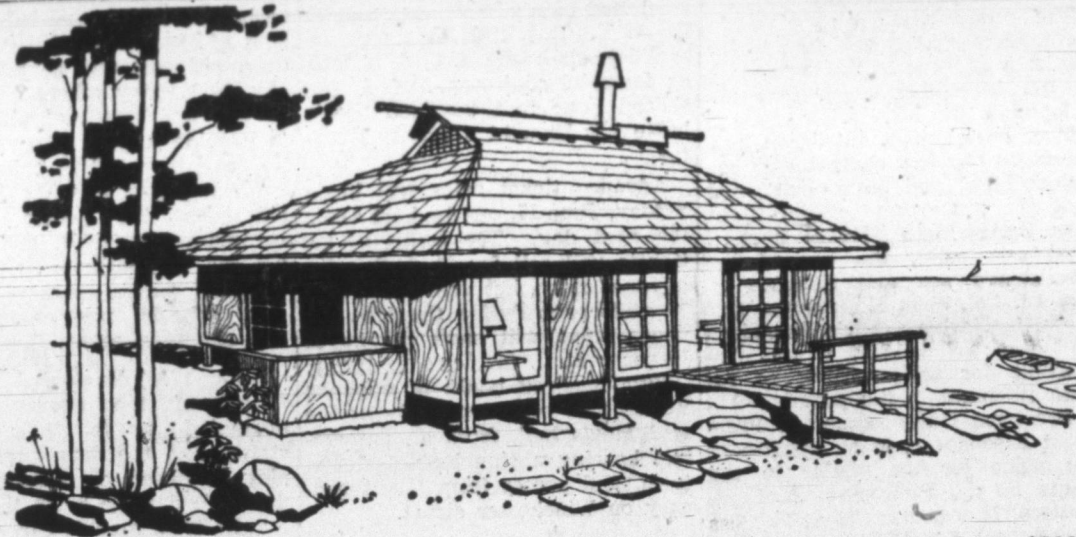


The spacious storage cabinets, easily made with big plywood sheets, provide plenty of space for all your outdoor and garden equipment.

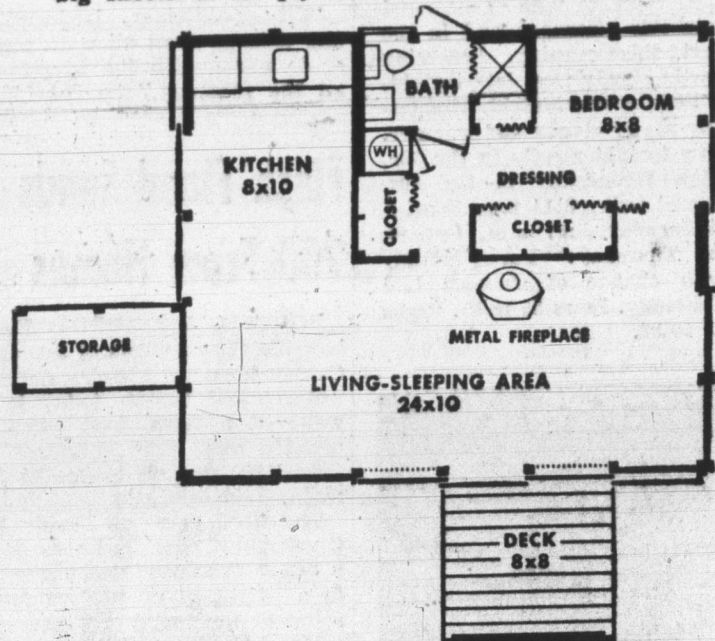


"Pay your fuel oil bills in small payments with the Mobilheat Balanced Budget Plan"

Mobilheat
PETRIE OIL CO.
PHONE 3-2014



You can admire the August moon from this teahouse of your own for as little as \$2000 if you're reasonably handy with a hammer and saw. Simplified construction methods and big sheets of fir plywood make it go together quickly. Detailed plans are available.



The floor plan shows the economical grouping of utilities and plumbing, keeping costs within reach of any budget.

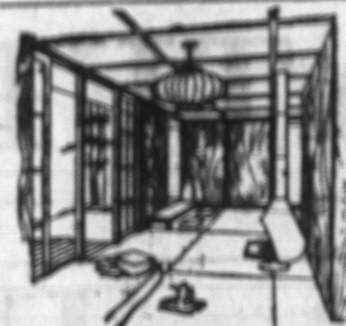
Eastern Look, Western Comfort Is Combined

The Oriental influence is becoming increasingly popular in building and decorating themes. There are a lot of drawbacks to simply transplanting the architecture of the east, but architect Laurence S. Higgins has put Oriental design and western comfort together in a summer home that combines the best of both worlds.

For about \$2,000 in materials, a leisure-bent family can have this home, which includes a complete kitchen, bedroom, 24 by 10-foot living-sleeping area, and a complete bath.

A sundeck and fireplace complete the picture of comfort offered in this house.

Open Quality
Higgins manages to preserve



A few simple, inexpensive touches bring a real Oriental flavor to this attractive cabin.

the fragile quality of Japanese construction, but the rugged materials used for this house make it weather and vandal-tight. The sliding doors can be locked and shuttered securely when the cabin is not in use.

Big panels of fir plywood, combined with large expanses of glass to take advantage of a marine view, give the house an open quality hard to achieve in conventional design. The simplicity of construction makes it possible for any determined amateur to erect the house in his spare time.

While roughing it appeals to the men, up to a point, this cabin caters to the ladies as well. It has a comfortable, relaxed quality that makes dad feel at home and still is easy for mom to keep clean.

One important feature, as far as the lady of the house is concerned, is the separate entrance to the bathroom. Youngsters with sandy feet and damp bathing suits don't have to tramp through the house to their clothes or change in the kitchen, the practice in a lot of summer homes.

Erection Is Fast
The plywood floor deck, with tile laid directly over it, makes a level, easily maintained surface.

Extensive use of large plywood sheets, inside and out, makes the cabin to quickly together. There is a minimum of cutting and fitting to befuddle and stall the amateur builder.

Studding is installed on four-foot centers, instead of 16 inches, saving both material and labor. The strength of plywood, called "diaphragm action" by engineers, makes extra bracing unnecessary.

One of the biggest headaches for the amateur builder, the roof framing, is eliminated by Higgins' use of a prefabricated truss system. The roof trusses can be prefabricated in town in the basement or garage and hauled to the site in a trailer or on top of the family car. They are easy to place on top of the walls and are quickly fastened down.

Loafing Built In
A plywood roof deck goes on over the trusses, providing another strong, solid diaphragm that is ready to take the shake roof, one of the features that gives this cabin its distinctive air.

All the plywood surfaces except the roof may be left unfinished the first year, if you'd like to spend a little more time roofing than finishing the job would allow. Exterior type fir plywood, made with fully waterproof glue, is used for construction and will not delaminate. The roof should be covered, because of the difficulty of making joints between panels water tight.

This cabin can be built on concrete piers right at the water's edge, or can easily be adapted to a mountain site.

Another plus factor in this design are the plywood built-ins. They are included in the plans and materials list and can be installed as building progresses.

Costs Vary Slightly
With this cabin design, it's possible to achieve a distinctive vacation house at little cost. Because of its architectural style, the cabin already has a definite Oriental flavor. A few decorative touches—Oriental prints, low furniture and delicate use of bright color—and you'll have a Teahouse your neighbors will envy.

Cost will vary slightly, depending on the area and the cabin site, which of course is extra. But a complete materials list is included with the detailed, easy-to-follow

plans, so you can budget your expenditures exactly. Plans are available for 25 cents from the Douglas Fir Plywood Association, Tacoma 2, Wash. A catalog showing other cabin plans also is offered, in full color, for 10 cents.

DECATUR READY-MIX CONCRETE

PROVED and APPROVED
for Better Construction

DECATUR READY-MIX, CORP.

E. Oak & Fornax Sts.

Phone 3-2561



Modern Design
WINDOW-LUME

AWNINGS

Available for Both
Casement and
Conventional Type
Windows.

HASTINGS
alumi-
AWNINGS

COMPARE WITH
ALL OTHERS

MADE RIGHT and PRICED RIGHT!
For Windows, Doorways, Patios & Porches
BEAUTY — DURABILITY — ECONOMY

Free Estimates

ASHBAUCHERS' TIN SHOP

ESTABLISHED 1915
HEATING—ROOFING—SIDING—AIR CONDITIONING
SPROUTING—AWNINGS—FANS

116 N. First St.

Decatur, Ind.

Phone 3-2615

NEW PAINT FOR 'PROBLEM HOUSES'



PATENTED TO RESIST:

- BLISTERING
- CRACKING
- PEELING
- CHALKING

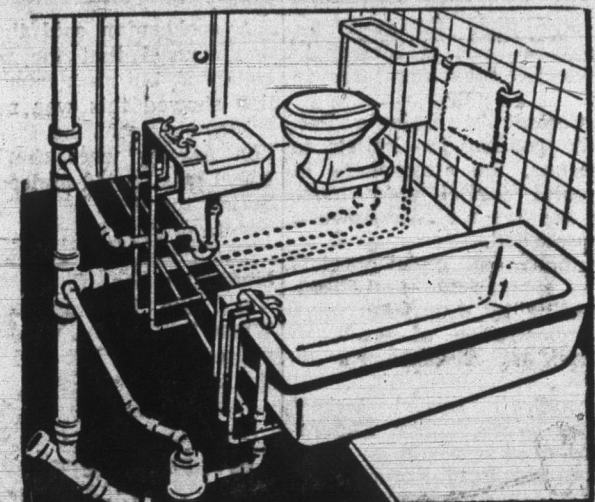
Burdall "ON-TITE"
NEW MIRACLE HOUSE PAINT

Give your house the marvelous protection of Burdall ON-TITE... banish your old fears of blisters, peeling, staining and cracking! Burdall ON-TITE takes a firm hold on your house... its patented formula gives a hard smooth film that stretches the years between paint jobs! ON-TITE is easy to apply... one coat does the job in most cases. If you have believed that your house is a PROBLEM PAINT JOB, you're due for a pleasant and profitable surprise when you paint with Burdall ON-TITE!

HABEGGER HARDWARE

"WHERE OLD FASHIONED COURTESY PREVAILS"
140 MONROE ST. PHONE 3-3716 DECATUR, IND.

MODERNIZE YOUR BATHROOM!



Increase the value, beauty and convenience of your home with lovely new bathroom fixtures.

BUDGET PAYMENTS EASILY ARRANGED!

FREE ACCURATE ESTIMATES

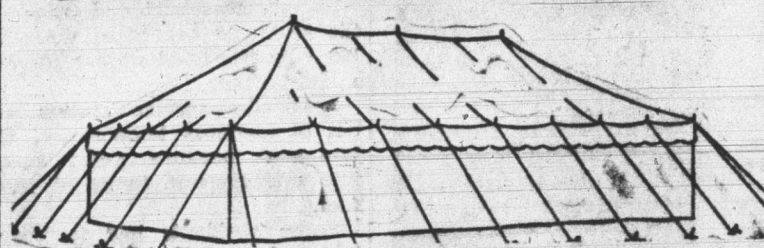
HAUGK

HEATING, PLUMBING, APPLIANCES & AIR CONDITIONING

209 N. 13th St.

Phone 3-3316

TENTS FOR RENT



WE RENT

- Large Tents
- Small Tents
- Canopies
- Camping Tents
- Bleachers
- Tarpaulins

HEADQUARTERS for
Tarpaulins — Awnings — Truck Covers —
Boat Covers — Swimming Pool Covers —
Camping Tents — Flags — Banners!

**FORT WAYNE
TENT & AWNING CO.**

Lower Huntington Road—Fort Wayne, Indiana
Phone Sherwood 3707

BRYCE DANIELS, Local Representative, Phone 3-3539

**READY-MIXED
CONCRETE**

precision-mixed
for your project

YOST READY-MIX CONCRETE

10% Discount

ON ALL READY MIX CONCRETE

CALL 3-3114

GET OUR PRICES — PROVE FOR YOURSELF
YOU GET THE BEST FOR LESS!

Yost Gravel-Readymix, Inc.

Phone 3-3114

Decatur

R. R. 1

Save!

FOR LIMITED
TIME ONLY

**PITTSBURGH
SUN-PROOF**
America's Finest
HOUSE PAINT

NOW ONLY

\$5.98

PER GALLON

BOWERS
HARDWARE CO., INC.

— Free Parking —

FOR OUR CUSTOMERS ON EAST SIDE OF BUILDING

PITTSBURGH PAINTS