



BETTER FOR FISHING THAN PLANTING—Etil Ambrose disks along the shoreline of a good-sized lake left by spring floods on his farm near Booneville in the Missouri River bottom. Large areas of land usually planted with corn by this time of year are still under water.

Many Seeking Second Spot On State Tickets

By EUGENE J. CADOU
United Press International

INDIANAPOLIS (UPI) — That's gold in them thar lieutenant governor hills.

That is the opinion of numerous leaders of both Republican and Democratic parties of Indiana who look forward eventually to running for governor with most campaign expenses paid by the state under prerogatives of the second office in the state.

It also is recalled that a number of lieutenants-governor have jumped from the second to the first chair in recent years, including M. Clifford Townsend, Henry F. Schricker and Harold W. Handley. And now Lt. Gov. Crawford F. Parker seems certain of the GOP gubernatorial bid.

Republican candidates for lieutenant governor include Alvin Cast, Kentland, member of the Indiana Toll Road Commission and former state chairman; Sen. Richard Ristine, Crawfordsville; Robert Webb, Noblesville, chairman of the Public Service Commission, and Philip H. Willkie, Rushville, son of the late Wendell Willkie and former state representative.

Cast Belligerent
An Indianapolis columnist reported that Cast has served notice on Parker that if he is not endorsed for the second spot, Cast will run for governor. That report has not been confirmed. Willkie is said to be considering a switch to the race for superintendent of public instruction. Willkie has drawn national attention with his advocacy of elimination of frills in school courses.

Democrats striving to be lieutenant governor appear to include State Sens. Earl Utterback, Kokomo, and Paul Bittz, Evansville, campaign office manager of Sen. Vance Hartke; State Rep. Jean LaGrange, LaPorte; Marion County Sheriff Robert O'Nea, Indianapolis; Kenneth Luckett, English, husband of the national committeewoman and possibly Mayor Charles Boswell, Indianapolis; Edward Voorde, South Bend, and Ralph Ferguson, Anderson.

Will Walsh Switch?
A report that Secretary of State John R. Walsh, Anderson, may change from the governor to the lieutenant-governor contest has been weakened by his recent oratorical blasts at a leading rival for the gubernatorial nomination, Sen. Matthew Welsh.

There seems to be little likelihood that either State Auditor Albert Steinwedel or State Sen. Nelson Grills, Indianapolis, will quit the contest for governor.

A report circulated today that Terre Haute Mayor Ralph Tucker, the 1956 nominee for governor, may make a repeat announcement during the next few days. He has been working hard against Welsh's nomination for many months. Tucker and Roger D. Branigin, Lafayette, former president of the Indiana State Bar Association and 1956 hopeful for governor, have been political playmates for several months.

Movement On For Stevenson Among Hoosiers

By EUGENE J. CADOU
United Press International

INDIANAPOLIS (UPI) — Many Hoosiers are quietly saying that Adlai Stevenson, former Illinois governor and twice the Democratic presidential nominee, should have a third chance at the White House.

Stevenson sentiment took a spurt in this state that always has liked him, after Sen. John F. Kennedy lost by more than 50,000 votes to Vice President Richard Nixon in their Indiana presidential preference primary "popularity contest."

When Sen. Stuart Symington apparently failed to be catapulted among the leaders in national presidential polls, despite the fact ex-President Harry Truman and former national chairman Frank McKinney of Indianapolis backed him, a Stevenson movement was stirred up.

Like Stevenson Speech
Some Democratic politicians in Indiana showed interest in attacking the Republican "peace and prosperity" slogan. These politi-

Fear Fall-Out?

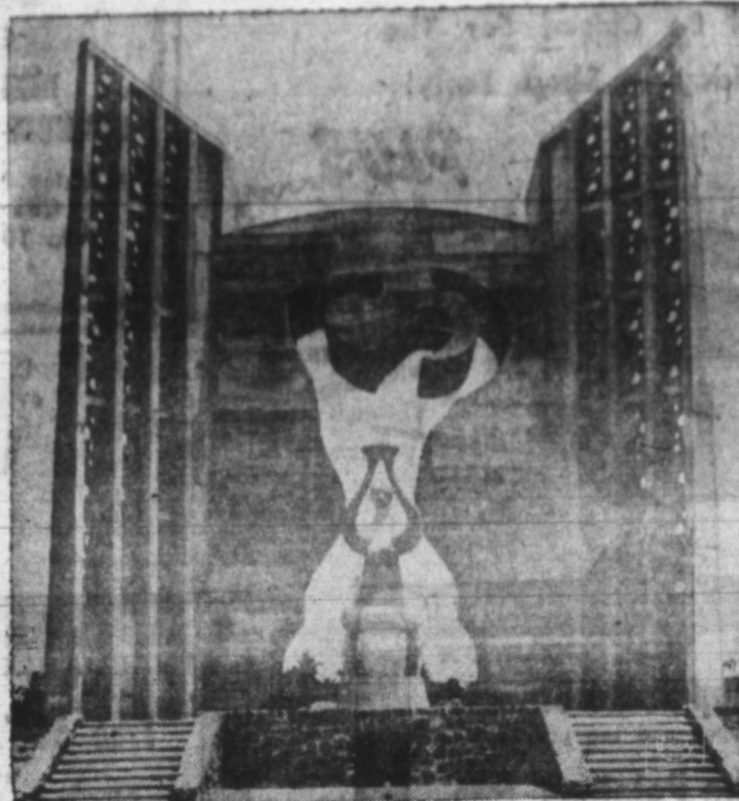
PITTSBURGH (UPI) — Young women whose hair suddenly begins to fall out shouldn't worry about becoming bald, reports Drs. William B. Guy and Walter F. Edmundson of Pittsburgh.

The doctors call the malady "diffuse cyclic hair loss." When it happens, they reported in the Archives of Dermatology, a significant per cent of hairs enter the resting phase simultaneously.

The Stripe's the Thing

NEW YORK (UPI) — Candy stripes are the newest fashion note in window shades. The stripes are pink, blue, yellow or green on a white background.

They look good with the new, no-iron sheets—that double as summer bedspreads—now available in the same color stripes, the Window Shade Manufacturers Association said.



TOGO, NOT TOGOLAND—This is a monument to the independent African state of Togo located in its capital of Lome. Silhouetted in the wall is a man struggling against his chains. Female figure in foreground brings a flame to set him free. Known as Togoland when it was administered by France under a U.N. trust, the country gained its independence April 27.

Things Have Changed Since We Were Kids



Fertilizing the lawn used to be a backbreaking, dirty, smelly job. How things have changed! **TURF BUILDER®** is light, clean, odor-free. Just pour it in the precise Scotts Spreader, set the dial to 6—then take a walk. Gives greener, thicker, healthier grass. So easy, even a grown-up can do it!

More and more folks are coming to us for advice on improving their lawns through an easy-to-follow Scotts Program. Come in anytime. We'll be glad to prescribe the correct Program for your lawn.

Save \$5! Scotts Spreader (16.95) plus Turf Builder (4.75) both only 16.70!



Schafers
SINCE 1874

clans, therefore, looked with favor on Stevenson's Chicago speech last week in which he deviated from the national unity line of Sen. Lyndon Johnson and others by contending that President Eisenhower blundered into the hands of Russian Premier Nikita Khrushchev.

The practical Democratic leaders, recalling that the "peace" issue worked well for Eisenhower in Indiana in 1952 and 1956, hope to damage the chance of Nixon by harping on the U-2 plane in-

cident reaction from Washington which included official denial that the plane spied.

An influential Indiana Republican agreed with the Democrats that "spy and lie" has hurt Nixon. But that was before Jim Farley, former Democratic national chairman, criticized Stevenson for his statement in what may have been a Kennedy maneuver.

Will Keep Some Votes
Kennedy will get all of Indiana's 34 votes on the first ballot at the national convention because

he won the state primary. Kennedy's co-manager in Hoosierland, State Sen. Marshall Kiser of Plymouth, believes there will be only one ballot. Others disagree. This writer is inclined to believe that Kennedy will retain at least 60 per cent of his Indiana vote on the second ballot, if there is one, but that he may slip in this state's delegation if the voting is prolonged.

Stevenson has been mentioned by backers of Johnson, Kennedy and others as a good man for

secretary of state in the next Democratic cabinet because of his world travels and concern over international issues.

Although Kennedy suffered considerably in former Indiana Ku Klux Klan strongholds in the primary voting, there are Democrats who say his greatest weakness is his youth. He would be 43 when inaugurated.

That's pretty young, they say, to face a hard-boiled, mature character like Khrushchev across a conference table.

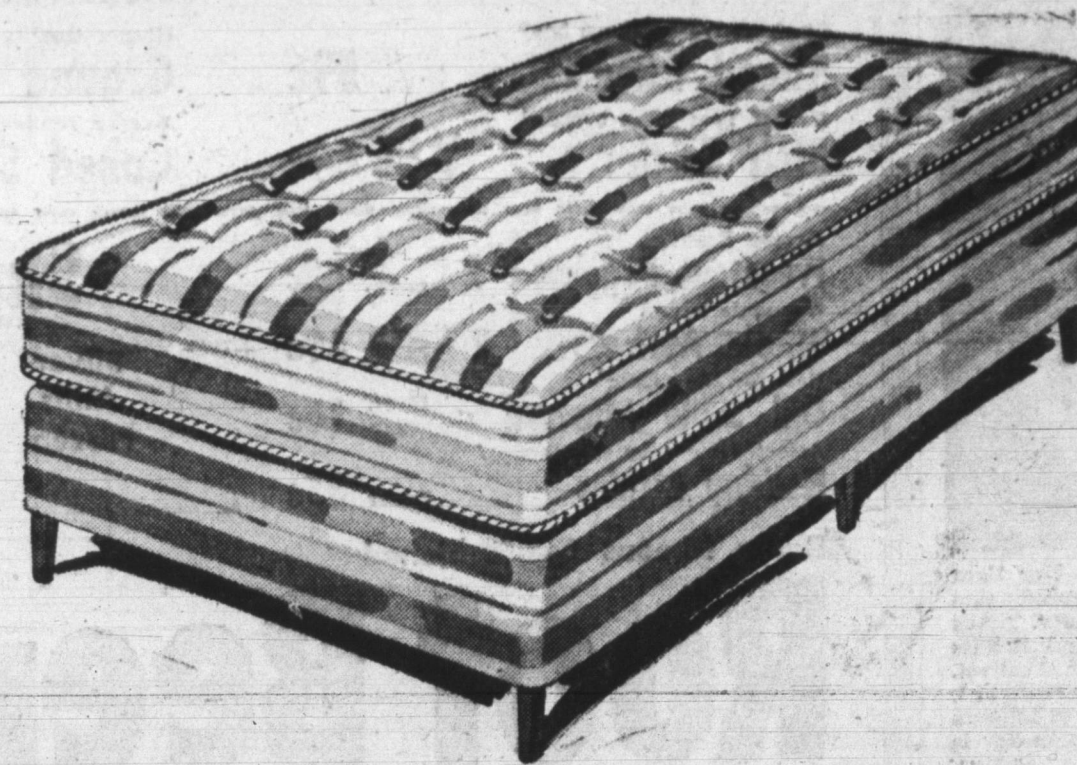
Here's Bedding Value!

EVEN MORE IMPORTANT than savings are the elements of COMFORT and QUALITY that you'll find in every piece of bedding on sale. This means that your money-saving investment will give you a maximum of satisfaction for many years.

SOFA LOUNGE VALUE AT SCHAFERS

BIG—COMFORTABLE SOFA LOUNGE—THAT CONVERTS TO A ROOMY BED WITH ONE EASY MOVEMENT—COVERED IN GOOD GRADE TWEEDS HANDSOME MODERN ARM STYLE

58⁸⁰



Reg. \$39.50 WOLF INNERSPRING MATTRESS & BOX SPRINGS AT REAL SAVINGS!

CLOSE-OUT COVERS OF A GRADE USUALLY FOUND ON HIGHER PRICED MATTRESSES — TOGETHER WITH FINE INNERSPRING CONSTRUCTION AND EXCELLENT TAILORING MAKE THIS AN UNUSUAL VALUE.

GUARANTEED BY WOLF AND SCHAFERS.

FULL SIZE INNERSPRING MATTRESS—NOW

BOX SPRING SAME PRICE

33⁸⁰

HOLLYWOOD BED OUTFIT VALUE AT SCHAFERS

COMPLETE TWIN SIZE HOLLYWOOD OUTFIT MADE BY WOLF TO GIVE REAL SLEEPING COMFORT.

INNERSPRING MATTRESS — SMART HEADBOARD METAL FRAME ON CASTERS AND BOX SPRING

49⁵⁰

Schafers
SINCE 1874

MEDICAL EXPENSES

ALL OTHER MEDICAL CARE \$5.50



MEDICAL COST, '60—Projected medical care expenditure in 1960 will amount to an average of \$105 for each of us. This includes expenses for health insurance. Data from Health Insurance Institute.