

RASH
Insurance Agency
224 N. 12th Street
Phone 3-3348

the Best
INSURANCE
... for less

PROOF—THAT
HUMPHREY
Tension Sealed
ALUMINUM COMBINATION
STORM WINDOWS



ARE
TODAY'S
BEST
BUY

See
these Features:

- * REMOVABLE SILL FOR EASY, QUICK CLEANING
- * MAINTENANCE FREE, NO PAINTING, NO STORING REQUIRED
- * FLOATING CHANNEL ASSURES SMOOTH ACTION
- * WILL NOT RUST
- * MODERN STREAMLINED APPEARANCE, NO UGLY SCREWS SHOW
- * CUSTOM-MADE TO INSURE A PERFECT FIT

CALL FOR FREE ESTIMATE

KOHNE
WINDOW & AWNING
CO.

711 Winchester St.
Phone 3-2259
John Kohne

New Refrigerator-Freezer Your 'Supermarket' at Home

A new electric refrigerator-freezer is the homemaker's personal supermarket. Like a good supermarket, it offers savings in time, energy, and money. Because of its large capacity, today's electric refrigerator-freezer makes it possible for a family to cut down considerably on marketing trips. The refrigerator compartment safely stores more than a week's supply of fresh foods and ample space in the freezing section helps the housewife provide year-round mealtime pleasure at bargain prices.

The working wife can eliminate tiresome daily stops at the market by stocking her refrigerator-freezer every week or so. The suburban or country family with a roomy new refrigerator-freezer saves time and car mileage—at about 10 cents a mile—and has long-term storage space for sale-priced frozen foods, home-made meals, and leftovers. By doubling recipes and freezing extra baked goods, casseroles, and even whole home-packaged TV meals, the homemaker can serve better meals for



less money and with greater ease. Since modern electric refrigerator-freezer units provide greater storage capacity without taking up added floor space, they are practical for both city and country dwellers, in small kitchens or large. Many have doors that when opened do not require any more space than the actual width of the refrigerator-freezer with the doors closed.

Fireplace Of Stone Lends Distinction

In an age of look-alike housing developments the home with distinctive decorative features immediately commands a better resale price. One of the most practical ways to give an elegant custom decorated look to an ordinary room is to install a natural stone fireplace wall.

Nowadays, a great variety of textures and colors in quarried stone are available in pre-cut, lightweight modular shapes that are practical for use in interior decoration. A fireplace unit can be built into almost any type of house and usually more than pays for installation costs by enhancing the resale value of the house.

Limestone, bluestone, sandstone, granite, quartzite, travertine and marble offer the home decorator a variety of colors ranging from pastel pinks and yellows to deep blues and purples and charcoal greys and jet blacks. Textures range from deep corrugated effects to highly polished surfaces.

Many interior designers are using the ceiling-high fireplace wall of natural stone as a prime focal point of decoration for the whole room.

In line with the trend of bringing the outdoors in, decorators suggest choosing a type of stone for the interior wall that matches or complements the color and texture of exterior stone walls. Extension screws make it practical to use the interior wall of stone as a background for plant shelves, mirrors or objects d'art, arranged in interesting composition with the textured stone background.

Designers give particular attention to co-ordinating the texture of upholstery and drapery fabrics. There is literally no limit to the variety of design used by interior decorators in creating elegantly distinctive stone fireplaces. Contrasting borders of polished stone are frequently utilized to dramatize the ribbed or rugged texture of the fireplace construction. Geometric designs or random type ashlar patterns are suggested to add to the importance of the fireplace as the dominant decorative element in the room.

If a new fireplace unit is constructed, it is important to comply with local fire prevention regulations. For good results, the base of the fireplace should be directly in contact with the earth.

The use of natural stone for interior floors to match stone paved patios is another decorative technique borrowed from the palaces of ancient Greece and Rome, which modern interior designers are adapting successfully to contemporary homes to create an air of elegant distinction at modest cost.

Tests Prove Basement Safest Part of House

The basement has been found by the Civil Defense Administration to be the safest place in the house, says the Better Basement Institute. In tests made to determine where Americans might find protection against air raids, it was shown that maximum safety could be obtained in areas below grade.

As a result of the growing interest in making the home safe, in the event of emergencies, more and more modern designers specify a basement shelter area, the Institute says. This shelter should be located not far from the stairs from the first floor to the basement, and also near the exit from the basement to the outdoors. Steps leading from the basement to the yard should be covered with a Bilco all-steel hatchway.

Give You Extra Hours

New Portable Dishwashers Fit Kitchens of Any Size

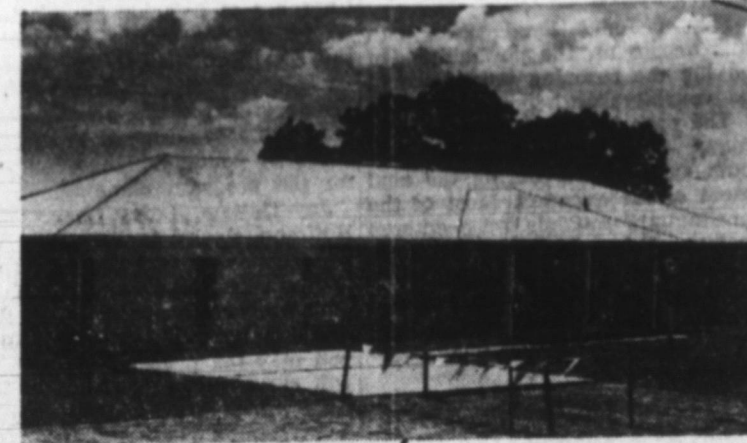
Kitchen walls can a prison make, and when the kitchen's small, the walls start closing in. This dilemma is one reason portable electric dishwashers were invented—to free housewives with small kitchens from their "prisons" sooner and give them extra hours for their families and recreation.

Millions of houses built since World War II—and most apartments since the dawn of time—have small "efficiency" kitchens. But there's nothing efficient about doing dishes by hand, especially when there's little or no counter space to stack them. Today's portable dishwasher is made specifically for small kitchens. It can wash anything a built-in dishwasher can—from 8 to 12 place settings, pots and pans, delicate china, fancy glassware and crystal. When not in use, it can be rolled away and the top used for valuable counter space. Some portables have a



thick wood breadboard or chopping block for a top. Important to people who live in an apartment or rented home is the fact that a portable dishwasher requires no installation. When the family moves, the dishwasher can be taken along.

Efficient Air Conditioning Depends on Construction



Insulation, white roof add to cool comfort of this modern home.

The new house in the photograph above was ready for efficient, low-cost air conditioning long before the contractor installed cooling equipment.

It was sited to protect living quarters from the summer sun, thickly insulated with mineral wool, and roofed with white asphalt shingles to reflect the sun's heat. The garage, located at the west, screens living quarters from long hours of late-afternoon sunshine, and a 4-foot roof overhang casts a deep shadow at the front of the house, which faces south.

Most important is the amount of insulation. For low-cost cooling, air conditioning engineers recommend thick mineral wool in the ceiling, walls, and in floors over uncooled areas.

DECATUR READY-MIX CONCRETE

PROVED and **APPROVED**
for Better Construction

DECATUR READY-MIX, CORP.
E. Oak & Fornax Sts. Phone 3-2561

CALL or SEE ASHBAUCHERS'

INSTALLERS OF THE FINEST
HEATING EQUIPMENT IN
DECATUR for 44 YEARS.

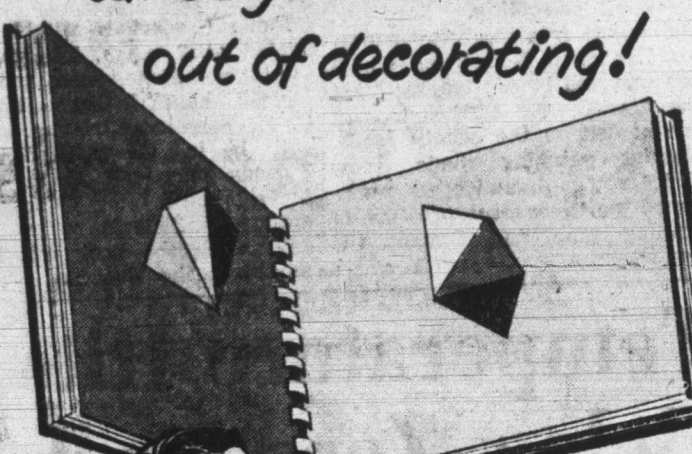
**IF YOU RECEIVED A
GAS PERMIT . . .
Now Is The Time!
To Have Your
NEW GAS FURNACE
OR
CONVERSION BURNER
Installed
FREE ESTIMATES!**

ASHBAUCHERS' TIN SHOP
Established 1915
HEATING—ROOFING—SIDING—SPOUTING
116 N. 1st St. Phone 3-2615

TRADE IN DECATUR

New! COLOR HARMONY BOOK

takes guesswork
out of decorating!



OVER 1500
COLOR HARMONIES

The wonderful Super Kem-Tone Color Harmony Book shows you over 1500 gorgeous color schemes that will make your decorating so easy . . . bring new life to your present furnishings, too. We'll lend you the Color Harmony Book without charge.

USE IT
FREE!

You're sure
of success with
Super Kem-Tone
and Kem-Glo
Colors!



\$6.39 Gallon \$2.85 Quart

KOCHER
Lumber & Coal Co.

102 N. 1st St. Phone 3-3131

Fancy Cabinet Doors

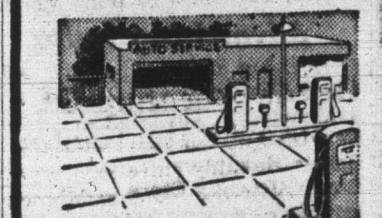
Handymen can "spruce up" cabinet doors by bonding a colorful piece of plastic surfaced paneling, about one-half the size of the door, to the old surface. Plain or matching moldings can be used around the piece of pre-decorated hardboard. For an additional decorative effect, spatter-paint the molding.

Heat your home with . . .
Fleet-Heat
A MODERN, FAST HEATING OIL
FROM FLEET-WING

"Fleet-Heat" Fuel Oil gives clean, safe, automatic heat. It's triple filtered, flows freely, burns without smoke. Sold exclusively by local, independent Fleet-Wing distributors.

Beavers
Oil Service, Inc.

READY MIXED CONCRETE



We mix concrete to your specifications, deliver it RIGHT at your job, ready to pour. Get our prices.

YOST READY-MIX CONCRETE

10% Discount
ON ALL READY MIX CONCRETE

CALL 3-3114

GET OUR PRICES—PROVE FOR YOURSELF
YOU GET THE BEST FOR LESS!

Yost Gravel-Readymix, Inc.
Phone 3-3114 Decatur R. R. 1

Dog's Life Cozy One For Idaho Spaniel

Queenie, a spaniel owned by the D. L. Andrews family in Boise, Idaho, enjoys the ultimate in modern comfort in her "home." Her doghouse is heated with electricity.

Andrews insulated the kennel and installed a 75-watt radiant heating element in the ceiling. A switch automatically turns on the heat when Queenie enters. Houses for humans also can be heated with electricity at costs comparable with other types of fuel if they are properly insulated. Specifications call for thicknesses of 6 inches of mineral wool in the ceiling, a minimum of 3 inches in walls, and 2 inches or more in floors over unheated areas.

Sales of Older Homes Up 15 Per Cent in '59

Good news for families who plan to sell their homes was reported recently by the Wall Street Journal. Sales of used houses in 1959, the Journal says, were up 15 to 20 per cent ahead of 1958.

No matter how old a house is, it sells faster and brings a better price when it is in good condition. A new roof of asphalt shingles in an attractive color, for example, and new paint inside and out often more than pay for themselves in a higher retail price.

Waterspar SPRAY ENAMEL



BOWERS
HARDWARE CO.

Free Parking For Our Customers On East Side Of Building
PITTSBURGH PAINTS
KEEP THAT PAINT FRESH FOR 10 YEARS

Custom TAILORED DRAPERIES

To Meet Individual
Specifications!

Draperies Made By
Experienced Workmen
Under Our Supervision!



CARPETING and FLOOR COVERINGS to Match
All Styles of Homes and Home Furnishings!
FREE Estimates On Home Service!

LYMAN DRAPERIES
Lyman H. Hann

517 W. Monroe St.

Phone 3-4817