

Gambles
The Friendly Store

wife-saver

SALE

Gambles "LUCKY 11" for Homemakers

O-CEL-O SPONGE
Ass't. Colors
11¢
Compare at 35c Each

5 DOZ. CLOTHES PINS
22¢
Save because of very slight irregularities on these hard-wood pins. Stock up now!

6 CEREAL BOWLS
33¢
Look! 6 durable plastic bowls—each a different color—at this terrific low price.

Oven Maid DRIP PAN
44¢
Handy kitchen helper keeps oven clean. Heavy aluminum with scalloped edge.

12 PLASTIC TUMBLERS
55¢
Terrific as water glasses—or for kids' party beverages. 10 oz. size. In pastels.

IRONING BOARD COVER
66¢
54" x 36" cover reflects heat. FREE iron rest included during this sale.

8 COFFEE MUGS
77¢
Holds a man-size cup of coffee! Heat-proof—by Fire-King. Ivory-white, 8 oz.

12 QT. PAIL
88¢
Sanitary plastic—easy to clean. Will not scratch or mar. Red, yellow, turquoise.

WASTE BASKET **22 Qt. Size** **Your Choice** **99¢** **TV TRAY** **BIG VALUE**

Perfect for bedroom, bathroom or kitchen. Red, yellow or turquoise plastic—will not mar floor and it's rust-proof!

An outstanding buy! Queen size tray with bright floral or scenic pattern top, black metal legs. 16" x 20 1/2" tray top size.

Trade—Own a Set of Matched Twins for Under \$300!...

CORONADO DELUXE 1960 LAUNDRY TWINS

129⁹⁵ 169⁹⁵

Electric Dryer 1.90 Per Wk, Payable Monthly Automatic Washer 2.15 Per Wk, Payable Monthly

● \$5 DOWN BUYS EITHER—\$10 PUTS THE SET IN YOUR HOME

● TRADE! WE'LL ALLOW MORE FOR YOUR OLD WASHER RIGHT NOW!

Automatic Washer Easy-to-operate automatic gives choice of warm or hot water wash, short or regular cycle. 10-lb. tub—partially built-in. Child-safe door latch, easy-feature. Turb-O-Clean. 42-7700

Electric Dryer First choice of budget-minded! Full-size automatic dries 10-lb. load quickly, safely. Child-safe door latch, easy-clean lint filter. 115-V. 42-1550

Price Cut Over \$30!

Regularly 244.95 **\$5 DOWN 214.95**

2.40 Per Week, Payable Monthly

CORONADO 21" Langford Console Television

Folks with an eye for a bargain will snap up this deluxe feature TV immediately! It offers you custom chassis for better picture producing power, aluminized picture tube for greater contrast. Quality 5" speaker, Mahogany finish cabinet is only 12 3/4" deep.

Slim Line DESIGN

Aluminized Tube!

Short Neck Picture Tube

HI-FI Sound!

TRADE We'll Give You More for Your Old Set!

Yes Sir! Just a Five Dollar Bill puts this T.V. in Your Home!

Death Toll Is Mounting From Severe Storm

United Press International
The death toll mounted today in the wake of one of the worst ice and snow storms of the season. Three children, all under 3 years of age, died when fire swept their family's four-room frame home in Smelterville, Idaho. A woman and two children were killed when their car was hit by two trucks on icy U.S. 50 near Emporia, Kan.

Their deaths brought to 31 the number of fatalities blamed on the storm, which swept from Colorado to the east coast earlier this week, leaving sub-zero temperatures and ice-glazed roads in its path.

Nebraska reported 12 storm deaths, Kansas had 7, Texas 6, Colorado 5, Oregon and Wisconsin 4 each, Missouri 3, New York 2 and Illinois, Iowa, Louisiana, Maine and Michigan 1 each.

Most of the victims died in auto accidents, froze to death or suffered heart attacks while shoveling away heavy snows.

Not even Florida and California escaped the storm's bite.

Tourists shivered in 48-degree weather in Miami and the mercury fell below freezing in northern Florida towns normally warmed by balmy Gulf breezes. Hundreds of thousands of Californians were hit by a flu bug which concentrated in the Los Angeles area.

The U.S. Weather Bureau predicted more cold weather today east of the Mississippi, but said warmer temperatures would move from western Texas into Nebraska and westward across Missouri into eastern Kentucky and Tennessee.

Warmer readings also were expected over the central and northern Rockies and throughout Montana, where the temperature rose 20 degrees early today—almost to zero.

The weathermen said snow flurries would fall from the Rockies across the northern plains to the Appalachians, with rain expected in northern and central California and the Pacific Northwest.

Stock Market Fails To Boom As Foreseen

NEW YORK (UPI) — Wall Street today measured the stock market performance of the first 13 days of 1960 — unlucky days that brought to mind vigorously the old financial district adage: "When any group is unanimous in anything it usually is wrong."

Wall Streeters recalled how they had ignored that adage but noted the stock market didn't. It declined in 11 of the 13 sessions in the industrials which lost 41.78 points or 6 per cent.

Before the New Year began everyone — economists, business men, market traders, brokers, and even the little fellows who make the big markets — had predicted a boom in 1960, the first of the golden sixties. There wasn't a dark cloud in the sky.

Few Were Ruffled
Such things as tight money, high prices for stocks, the good news of the steel strike settlement, bigger demand for some U.S. Treasury securities, foreign selling, institutional selling, and a dose of anti-inflation didn't ruffle a single prognosticator.

Almost to a man — they had plotted a rising curve for the market that would bring the industrials to 750 or higher, against the 1959 close to a record 679.36.

Things started fairly well. Prices moved higher but a dip before closing in the first session left the industrials a mile lower. But the rails gained 3.13 points, and market men said that was a good omen. They looked for new leadership in the 10-year old bull market from the carrier shares.

In the second session, industrials and rails both made new highs for the year—industrials at a record high of 685.47 and rails at 160.43.

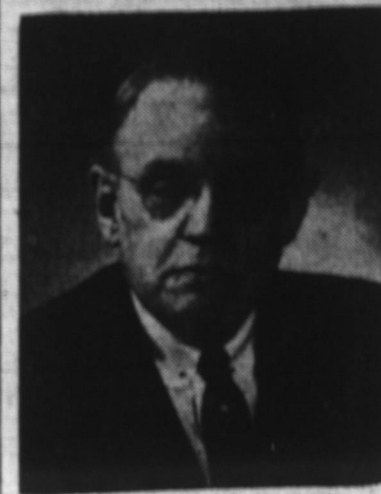
Utilities Best Behaved
At the close Wednesday night, the industrials were down to 643.69, a new low since Nov. 19, 59, a new low since only 5.30 points or 3.3 per cent and would have made a much better showing had not Chesapeake & Ohio fallen \$10.50 a share.

Utilities behaved best of all, rising four times in the 13 sessions and losing only 1.90 points or less than 2.2 per cent in the period.

The brokers were hard put to make buying recommendations. One suggested buy the "wallflowers," the stocks of good caliber that hadn't moved in a long time.

Another said buy the "comfortable stocks," the ones that could be relied upon to show good earnings and some price appreciation regardless of what happened.

Glossy Finish
Add a little borax to the water in which sateen or cotton materials with a glossy finish are rinsed, and it will help retain the shiny surface.



Judge Russell W. Smith
To Seek Nomination

Judge Russell W. Smith, presently a member of the Indiana appellate court, announced this week that he will seek his party's nomination for the office of judge of the Indiana appellate court at the Democratic state convention to be held June 21 of this year.

Judge Smith is a close friend and associate of Judge G. Remy Brierly, who has served this past year on the appellate court with the LaPorte county judge.

Newly Appointed

A resident of LaPorte, Judge Smith has been active in Democratic politics for many years. He represented LaPorte and Starke counties as joint representative in the Indiana general assemblies of 1927, 1931 and the special session of 1932. In 1934 he was elected judge of the LaPorte county superior court and was re-elected in 1938. He served as attorney for the Indiana legislative bureau for ten years and then was appointed as a member of the appellate court in March of 1959. The 1959 Indiana general assembly provided for two additional members of the appellate court to be appointed by the governor, serving until the next general election. The appointees were to be a Democrat and a Republican; Judge Smith was appointed as the Democratic member.

Practiced Law
From 1923 until 1935, Judge Smith was engaged in the general practice of law in LaPorte, associated with the firm of Smith, Rees and Smith. His father, Ralph N. Smith, a prominent Democratic official and attorney, was a member of the firm until his election as a member of the appellate court in 1932.

A member of the 1917 graduating class of the LaPorte high school, Judge Smith attended Indiana University until his induction into the United States Army during World War I. Following his release from service, he attended the University of Michigan, graduating from the law school of this institution in 1923.

A member of the Indiana state bar association, American bar association, the American Legion and the Methodist church, he is married and has a step-daughter and three grandchildren.

British Socialist Leader Is Critical

LONDON (UPI) — Aneurin (Nye) Bevan, 62-year-old fiery symbol of British Socialism, struggled for life today in a London hospital. An official statement said his condition was a cause for grave anxiety.

Bevan underwent a major abdominal operation Dec. 29 and his apparent failure to snap back has been consistently apparent in cautiously-worded hospital communications. His wife, Mrs. Jinnie Lee, also a noted Labor MP, has been a daily visitor.

Messages of sympathy and cheer have poured in from all over the world, including one from Soviet Premier Nikita Khrushchev. Queen Elizabeth has been in almost daily touch with Mrs. Lee and the hospital.

Exact nature of the surgery undergone by Bevan, deputy leader of the Labor party, has not been announced. But his doctors include specialists in duodenal and gastric ulcers. Reports Bevan might be a victim of cancer were denied recently by Hugh Gaitskell, the Labor party chief.

That Bevan was in a crisis stage first was disclosed late Wednesday when a hospital bulletin spoke of his doctors' grave anxiety. The possibility of a blood transfusion was mentioned. Late Wednesday night Bevan's surgeon, after calling on his patient at the Royal Free Hospital, said there was "no change." But he said "we are not worried for the night."

Woman Driver Dies As Train Hits Car

ELKHART, Ind. (UPI) — Mrs. Geneva S. Francisco, 44, Elkhart, was killed at midnight Tuesday when her car was hit by a New York Central Railroad passenger train at a crossing here. Her death was the 49th traffic fatality in Indiana this year, and the first reported since Sunday evening.

Sen. Kennedy To Seek Votes Of Wisconsin

MILWAUKEE (UPI)—Sen. John F. Kennedy plunged into the Wisconsin presidential primary today with a charge that his chief competitors for the Democratic nomination are staying "safely on the sidelines" in hopes of manipulating the convention.

Kennedy announced that he will wage an April 5 primary battle against Sen. Hubert Humphrey (D-Minn.) in Wisconsin, the heart of Humphrey's strength for the Democratic presidential nomination.

"I am fully aware of the risks and difficulties that course involves," the Massachusetts Democrat said in a prepared statement.

In an implied jab at Humphrey, who is not running against him in the New Hampshire primary, Kennedy said:

"No other candidate, real or unannounced, has indicated a willingness to enter any primary adjoining the home state of another contender—including New Hampshire, which is next to my own state of Massachusetts."

But Kennedy said that "nevertheless, the people of Wisconsin should not be denied their right to help select the Democratic presidential nominee merely because their state happens to adjoin Minnesota." The latter is Humphrey's home state.

"The Republicans of Wisconsin have frequently in the past been given a wide choice of presidential contenders," Kennedy said. "In 1960, they will not have such a choice. The Democrats must."

Without mentioning any names, Kennedy pointedly said: "Even though my chief competitors in the convention remain safely on the sidelines, hoping to gain the nomination through manipulation of the convention, I cannot follow the advice of those urging me not to enter this or other representative primaries."

Cass County Sheriff Dies Of Heart Attack

LOGANSPORT, Ind. (UPI) — Cass County sheriff Lonnie Hall, 48, collapsed in the hallway of the courthouse Wednesday night and died of a heart attack. He took office only a year ago after his election as a Republican in 1958. Hall was a member of the Logansport Police Department for 20 years and once was chief.

WEEKEND SPECIALS!

Ground Beef	1b. 29c
Potatoes	10 lbs. 39c
Pork Patties	1b. 49c
Head Meat & Souse	1b. 39c
Slicing Bologna	3 lb. \$1.00
Wieners and Garlic	
Franks	1b. 39c
Fresh Side &	
Sausage	1b. 25c
Young Beef Liver	1b. 39c
Pork Liver	1b. 19c
Minute Steak	1b. 69c
T-Bone Steak	1b. 69c
Round Steak	1b. 69c
Sirloin Steak	1b. 69c

OPEN FRI. & SAT. 9 P. M.

SUDDUTH'S Meat Market

512 S. 13th St. Phone 3-2706

ELKS LODGE

SATURDAY, JAN. 23

Entertainment 9:00 P.M. to 10:00 P.M.

DANCE—Ray Giant Orchestra—10 P. M. to 1 A. M.

ELKS and INVITED GUESTS!

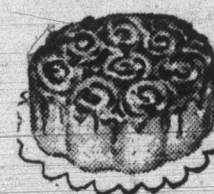
NEWBERRY'S GIGANTIC YARD GOODS SALE

IS BEING CONTINUED THROUGH SATURDAY!

J.J. Newberry Co.

for YOUR Valentine's day PARTY!

FRESH LEMON - ORANGE CAKE 74c



Dutch Bread

CAKE Our Specialty



Especially Decorated Cakes!

Try Our Delicious DANISH "Breakfast" ROLLS!

Stewart's Bakery

229 North Second Street

ALWAYS BETTER BUYS AT GAMBLES