

Auxiliary Cabinet Located Under Existing One

A logical place for extra kitchen storage is immediately under the wall cabinets. The home owner or carpenter can build auxiliary cabinets in this location; they'll look fine and cost little.

Hung on the wall, the cabinet already has two sides—the wall for a back and the cabinet bottom for a top. Use 1/2-inch lumber for bottom and ends, which are traps—boards that are 10" at back, 6" at bottom, 8" at top and 10" on slanting front.

Obtain from your lumber dealer some metal tracks for the 1/2" hardwood or peg-board sliding doors used to close the cabinet. A wood shelf in the center of the storage efficiency.

Prime and paint the cabinet ends and trim to suit the surroundings, and decorate the peg-board or hardwood doors in a contrasting color.

New Bathroom Can Go In Small Space

Trying to find space in your home for a second or third bathroom? Typical good locations are in the attic, directly over the kitchen or first-floor bathroom; in the basement below a kitchen or bathroom, or next to the laundry room; in a closet, near existing plumbing, which can be used for storage until you are ready to finish it off; or in a room, also near existing plumbing, which can be partitioned off when the time comes.

You may be surprised at how little space you need for a bathroom. The three basic fixtures—bathtub, wash basin and water closet—can easily be fitted into a space 5 feet wide and 7 feet deep. In a space 5 x 6, you can squeeze a stall shower, water closet and basin. In an even smaller space—4 by 4—you can provide a wash-room, lacking only the tub or shower.

Dual Plumbing Serves Lavatory, Recreation Room

One of the fastest and most economical ways to build a sink-equipped bar area and a powder room in the basement is to locate the facilities on opposite sides of a two-way plumbing wall to take advantage of common water supply lines.

The wall also will pay off as a space-saver in a small basement. Since it carries no structural load, the wall offers big pockets for oversize medicine and storage cabinets in the powder room.

An attractive bar-lavatory layout was featured in a recent issue of Popular Science magazine. A unique hideaway idea feature in the magazine's design was a hinged bar that swings around to cover the sink when it is not in use.

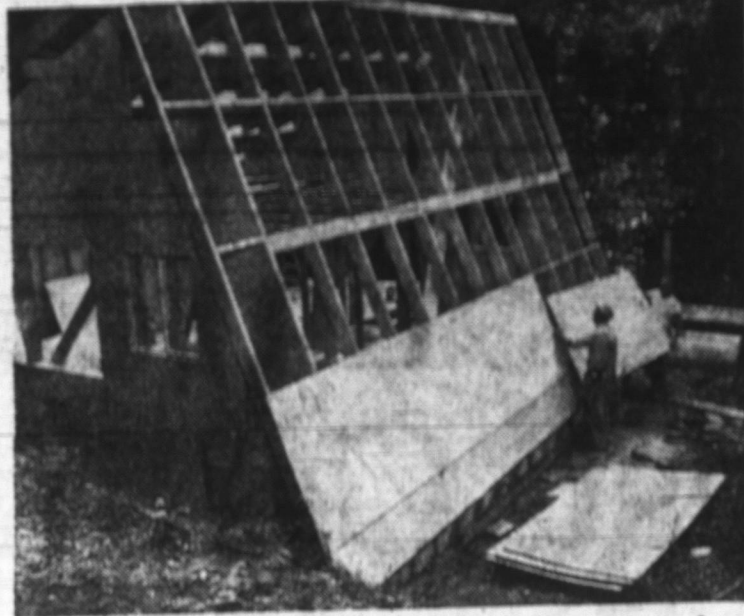
For a good-looking yet practical decor, the walls, bar, lavatory and sink counters are covered with Marlite, the plastic-surfaced hardboard. A handsome woodgrain gives the bar area an informal appearance, while a distinctive marble pattern on the twin lavatories and side walls accents the colorful wall panels in the powder room.

Highly-resistant to heat and moisture, Marlite never requires refinishing. Extremely easy to maintain, even hard-to-remove stains can be wiped off plastic-surfaced hardboard with a sudsy cloth.

A free plan showing construction details for a bar-lavatory arrangement built from a common plumbing wall can be obtained by writing a postal to Marsh Wall Products, Inc., Dept. PR-2, Dover, Ohio.

Like Natural Finishes

Natural finished wood kitchen cabinets are top favorites. Natural finishes account for 69 per cent of the output of factory-built wood cabinets. Birch is the most-used wood, followed by mahogany, knotty pine, ash maple, oak and walnut.



More and more families are building vacation cabins these days because they offer a good financial investment and provide an escape from the workaday routine. Douglas Fir Plywood Association has a free catalog of cabin plans.

Second-Home Trend Gaining Ground Throughout Country

Years ago, a house in the country was something for millionaires only. Times have changed—one authoritative trade magazine recently estimated that 75,000 vacation cabins will be built this year.

Douglas Fir Plywood Association, which represents west coast plywood manufacturers, has been studying this trend for five years. According to managing director W. E. Difford, the day is coming when the second house may be as common as two cars.

Difford says "The modern trend toward longer vacations and a shorter work week has made it possible for more and more families to buy a piece of property and build a leisure-time shelter. For some, the place is a fishing or hunting hideaway in the mountains. For others, it is a weekend place near the water or out in the country."

Architect Designed Working with a team of architects over the past five years, the plywood association has developed a dozen designs for vacation houses which range from a \$1,500 shelter to a \$4,000 holiday headquarters. They have received over 70,000 requests for cabin plans and information in a single month.

Reasons For Trend In studying the leisure time field, the association has found that there are four basic reasons why people buy property and build second homes. They provide an escape from the workaday routine, they offer a chance for adventure, they are an outlet for creative urge, and they offer a good financial investment.

The best sources for financing the construction of a second home are local banks, savings and loan associations, and other real estate and mortgage loan outlets. In many cases, the equity in your present home can be used for security on further borrowing.

Although many holiday homes are professionally built, the new trend has helped revive the do-it-yourself movement. Most small homes or cottages are relatively simple to build, and expert workmanship isn't so important out in the woods or near the water. By working carefully and following construction plans, many families have saved money by doing at least part of the work themselves.

Plans, Catalog Available The plywood association has plans for several different types of cabins. If you are interested, write Douglas Fir Plywood Association.

Flexible Counter Top In Kitchen Will Make Hit

Home handymen can score a "hit" with Mom by installing new kitchen countertops, which can be both colorful and easy-to-clean if covered with a flexible plastic sheeting material.

The sink and old countertop should be removed first so that a base of 1/4" Presdwood or underlayment can be fitted accurately. Hardboard is recommended because it is smooth, grainless and free of any imperfections that might mirror through the plastic sheeting. Also, nails or staples used to attach the hardboard to the counter can be driven flush so that the plastic sheeting will fit smoothly. The shape of the counter area can be traced on a piece of heavy building paper, and then transferred to the Underlayment and flexible counter surfacing material.

The surfacing material is secured to the underlayment with a latex-type adhesive, which should be applied with a notched spreader. Hand pressure should be used to secure a strong bond.

To insure a neat job, excess material should be trimmed before the sink is replaced and the metal edging strip attached. Plastic cut from the sink well and leftover material can be used for shelf and drawer linings, surfacing for stools or as a covering for cabinet doors.

Blocks Popular For Home Flooring

Laminated oak blocks are becoming popular as a flooring material for home modernizing projects. The blocks are especially suitable for below-ground recreation rooms and for home additions built on concrete slabs, according to the National Lumber Manufacturers Assn. The ease with which the blocks may be installed makes them ideal for do-it-yourselfers.

Before the blocks are applied, concrete slabs should be moisture-proofed. Then, a mastic is spread over the slab with a toothed trowel. The blocks, nine inches square and prefinished, have a tongue-and-groove arrangement, so the groove of each succeeding block can be "hinged" over the tongue of the adjoining one. This prevents the mastic from bunching up, while insuring a tight fit.

Since the blocks are laminated, expansion is a negligible factor and the contractor or home craftsman need not worry about allowing expansion room at the borders.

Various Coatings For Protection

There are various types of coatings which will make masonry walls moisture repellent. When you wish to provide protection for the masonry without changing its color you employ one of the transparent coatings prepared for this purpose. You have several choices in colors and finishes. The oldest of these is house paint.

There are colorful cement-based paints which come in dry form and are based on Portland cement, lime and pigment. Mixed with water and applied to a previously dampened surface, they assume a form that is similar to concrete or mortar.

Some 'Softwoods' Are Really Hard

Manny are confused with the scientist's system of classifying trees as hardwood or softwood.

Especially because some softwoods like Douglas fir are harder than hardwoods like yellow poplar and basswood. Softwoods usually have needles and evergreen and bear cones, while most hardwoods are broadleaves, generally shed their leaves in the fall, and bear some form of seeds or pods.

Household Ammonia Solves Pipe Problem

Common household ammonia comes to the handyman's aid in loosening rusted pipe connections. Just spill a few drops on the connection, let it remain a few minutes to penetrate the rust. Then turn the connection the right way. Raid the little woman's cosmetic chest for another handy gadget—an emery board. Use it for all the little sanding jobs where large sheets of sandpaper and your fingers won't reach.

Minimize Shrinkage

Avoid overheating a new house and shrinkage will be kept to a minimum. Experts advise owners to keep room temperatures at not more than 70 degrees Fahrenheit. They point out, though, that the problem does not arise with materials such as brick, ceramic tile and stone. When separations do occur in the grout or cement joints of these materials, try an inexpensive white portland cement to fill in joints cracked by shrinkage.

Wood Cabinets Favored

Four out of five homemakers recently surveyed by the National Lumber Manufacturers Association rated wood kitchen cabinets, painted or with a natural finish, at the top of their list. The women emphasized that they were eager to get away from the "antiseptic, hospital look" that was popular for kitchens several years ago.

Trussed Rafters

If a home buyer expects to make future changes in the interior layout of his house, it is best to buy one with trussed rafters or with plank-and-beam roof framing carried on a few posts. Interior walls may be rearranged as desired, since they are not required to support the roof, the National Lumber Manufacturers Association points out.

Use For Piano Bench

An old piano bench with a hinged top makes an ideal work and play table for a child's room. About 8 inches should be cut off legs to make the table a good height. The compartment in the top holds crayons, coloring books, scissors, and other equipment.

'Natural' Finish

There are several ways to obtain that so-called "natural" finish on wood surfaces. When working with an unfinished wood and you wish to show the grain, first apply a coat or two of varnish, then the wax. Be sure to thin any varnish or paint in accordance with the directions on the label.

Wax Varieties

Polishing wax comes in three forms: paste, liquid and emulsion. The paste and liquid forms require polishing after drying. The emulsion type dries naturally with more or less gloss and usually is not polished. It is sometimes called "self-polishing" wax.

Inside Bath Okayed

Windowless bathrooms have been approved by FHA with the provision that they be ventilated. This ventilation can be accomplished with small exhaust fans or hinged skylights built into the roof.

Want Bigger Kitchens

Larger and better equipped kitchens with such conveniences as factory-built wood cabinets, are among the "omits wanted" home features.

Here's How To Save Space In Workshop

There are many ways in which you can save space in your workshop. Here are some tips. DO—remember that, for those who have a minimum amount of home workshop space at their disposal, it is important to assign a storage space to every tool or piece of material.

DO—store all small hardware—nuts, bolts, cotter pins, etc.—in small glass jars, nailing the tops of the jars to the underside of a shelf so that the items are both visible and handy.

DO—use overhead space for the storage of lumber, doing-it-with-ready-made metal suspension racks or wooden ones which you can make yourself.

DO—position tools so that long pieces of wood and other materials can be extended through an open window or door while being cut.

DON'T—forget that, for paint and other self-stored items, you can make excellent use of adjustable shelves, storing items of the same height on each shelf.

DON'T—neglect the advantages of casters on power tool stands, since they enable the machines to be placed against the wall when not in use.

Answers To Your Kitchen Queries

Q. We plan to remodel a small kitchen that lacks work and storage space. If we install a dishwasher, can I save space by using a smaller sink?

A. With a sink bowl as small as 16 inches, over-all, across the front. The 24-inch countertop above the dishwasher is adequate for stacking pans and dishes.

Q. Are discoloring, water spots, and finger marks a problem with stainless steel?

A. Stainless steel will not chip, crack, or discolor. Where water spots or finger marks do appear on the gleaming smooth finish, a wipe-up with a damp cloth or sponge removes them instantly.

Q. What is the most important appliance in the kitchen?

A. There's no real answer to that. Important, how? One thing, though, is that several research studies have shown that most kitchen trips are made between the sink and range.

Q. Does a sink always have to be under a window?

A. Most women still prefer a sink under a window, although in some cases too much bright sunlight streaming in can be an inconvenience. A handy location in relation to other appliances is far more important.

Q. Is it true that a stainless steel sink will not mark my dishes and enamel ware?

A. Stainless steel is far too hard to rub off on anything, so it cannot leave marks. You may be confusing modern stainless steel with nickel silver sinks used some years ago.

Use Presdwood To Cover Up Cabin Framing

If the unfinished interior of your vacation cottage depresses you, dress it up with paneling, which is both inexpensive and easy to apply. Raw rafters and studs, at best, are unattractive, and after a season or two they can get on your nerves.

Available at reasonable cost at lumber dealers is Masonite Panelwood, which can convert the drab interior into something colorful and pleasant. Panels are four feet wide and up to 12 feet long. Little cutting is involved. Edges of panels are easily beveled and the joints butted together moderately or covered with battens. The same material is applied to the rafters.

You will be pleasantly surprised at the transformation of your summer home.

Just leave the panelwood in its natural color, an attractive brown, for a rustic effect. If you wish, of course, you may decorate it as you would any wall.

Some cabin owners prefer using a rustic-appearing hardboard known as Seadrift to finish the interior. This embossed paneling takes a beautiful finish, and it will wear indefinitely.

If walls and ceilings are lined with insulation before the wall panels are applied, you will have taken a big step toward "winterizing" your summer home for off-season use.

End Fasteners

Use a longer wood screw when it is to be set in the end grain of a board for it won't hold as well here as on the other surfaces.

Want your whisk broom to last longer? Dip the tips of the broom in fresh, white shellac that has been thinned. It will also keep the broom cleaner.

MOBILHEAT with RT-98

the fuel oil for easy heating

Mobil

PETRIE OIL CO.

8th & Monroe Ph. 3-2014

RASH Insurance Agency

224 N. 12th Street

the Best INSURANCE ... for less

HUMPHREY TENSION SEALED ALUMINUM

COMBINATION STORM WINDOWS & SCREENS

- America's most beautiful window.
- Made from highest quality Aluminum, 100% rustproof.
- Self-lubricating, Smooth-gliding action.
- Completely maintenance free. Made to be forgotten.
- Narrow streamlined appearance. No ugly screws showing.
- Combination window made to order at no extra cost.
- Aluminum screen wire.
- Self-storing for greater convenience.
- Direct from local factory to you.
- EASY TERMS.

SEE FOR YOURSELF

A home demonstration will show you how the panels can be arranged for no-draft ventilation, or removed from the inside for cleaning. CALL TODAY! There's no obligation. Phone—

TERMS TO SUIT YOUR BUDGET

Kohne Window & Awning Co.

711 Winchester St.

Phone 3-2259

JOHN KOHNE



MASONITE ROYALCOTE FINISHED PANELS

Yes! A new, low-cost way to add true distinction to your living room, den, family room, etc. Masonite Royalcote finished panels offer decorative grooves and an attractive surface. Sturdy 4' x 8' panels go up fast. They're easy to cut and fasten... won't split, splinter or crack. Come in and see the several finishes.

ARNOLD LUMBER CO., INC.

"Your Complete Builders Supply Department Store"

Winchester Street at Erie R.R. Crossing
OPEN FRIDAY 'Till 9:00 P. M. FOR YOUR SHOPPING

CALL or SEE ASHBAUCHERS'

INSTALLERS OF THE FINEST HEATING EQUIPMENT IN DECATUR for 44 YEARS.

IF YOU RECEIVED A GAS PERMIT . . .

Now Is The Time! To Have Your NEW GAS FURNACE OR CONVERSION BURNER Installed

FREE ESTIMATES!

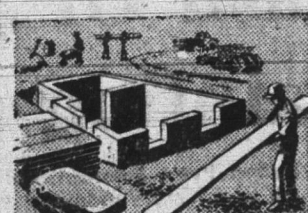
ASHBAUCHERS' TIN SHOP

Established 1915 HEATING—ROOFING—SIDING—SPOUTING

116 N. 1st St.

Phone 3-2615

READY MIXED CONCRETE



Fill your foundation molds with our delivered-on-time, ready-mixed concrete. Get the exact mix you order.

YOST READY-MIX CONCRETE 10% Discount ON ALL READY MIX CONCRETE

CALL 3-3114

GET OUR PRICES—PROVE FOR YOURSELF YOU GET THE BEST FOR LESS!

Yost Gravel Readymix, Inc.

Phone 3-3114

Decatur

R. R. 1