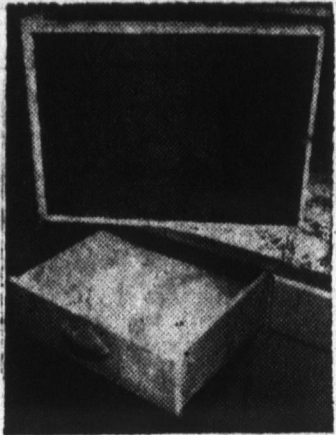


Make Drawer Bottoms Out Of Hardboard

Every dresser, whether it's made by a handyman or a professional, must have a bottom, and the best material you can use for drawer bottoms is smooth, splinter-free hardboard. The frame of the drawer can be made of natural wood.



Hardboard bottoms should "float" in or on supports. You can dado the inside edges of the sides to accept the bottom, or set the bottom on cleats you nail to the sides. This trick allows for expansion and contraction which normally takes place in wood and wood products.

The easiest way to assemble the drawer is to fasten the back corners first, slip in the hardboard bottom, and then fasten on the front. Use waterproof glue and finishing nails. Countersink the nails and fill the holes with water putty or wood filler.

Balky Windows

One of the most common causes of sticky windows is hardened paint in one or more of the grooves in which the window sash is set. Insert a putty knife or similar tool under the sash—from outside the window if possible—and pry the window loose.

IT'S EASY TO FIX—
CALL FOR READY-MIX!

USE . . .

**DECATUR
READY-MIX
CONCRETE!**

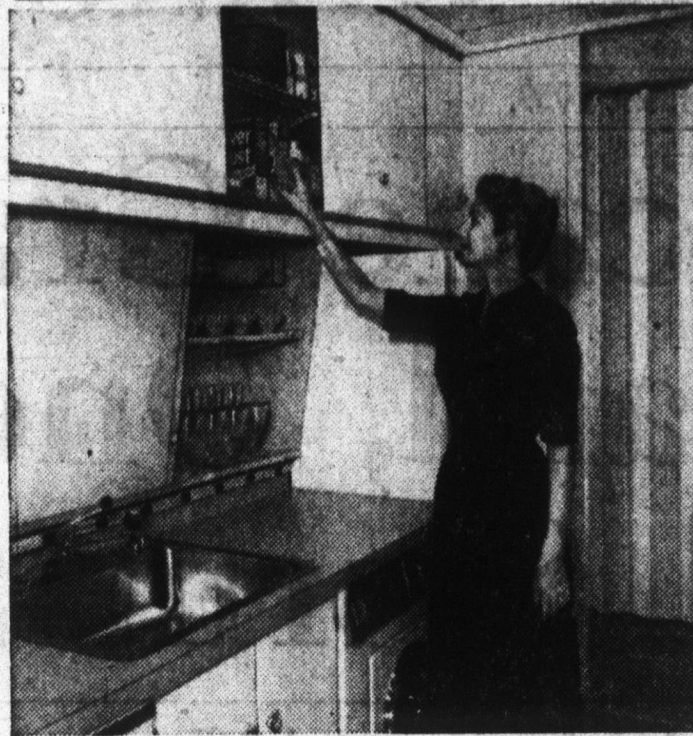
**FOR MANY
IMPROVEMENTS
AROUND THE
HOME**

• ECONOMICAL
• LONG-LASTING
• FIRE-SAFE

**DECATUR
READY-MIX
INC.**

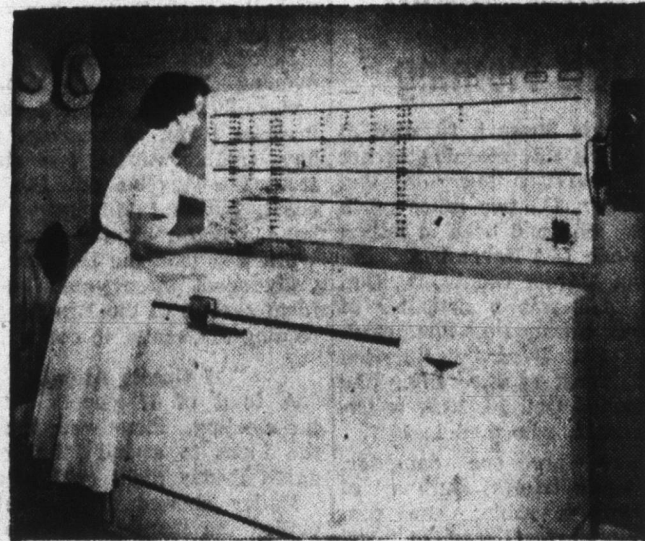
E. OAK and FURNACE
Phone 3-2561

Cabinets Hang on Back Wall



The special wall system in the kitchen of the NAHB Research-Masonite house in Knoxville, Tenn., supports both the cabinets and the fixtures for the various racks and shelves. A similar working wall system, called Masonite Panelok, will be available at lumber dealers this year.

Freezer Inventory Board



If you own a home freezer, you need perforated hardboard inventory board.

This panel will help you to keep track of how many packages and which kinds—meat, vegetables, fruit, ice cream, etc., you have on hand at any time.

The board is made by framing a 4 x 8-foot panel of perforated hardboard with 3/4 x 3/4-inch wood strips attached by glue and nails

between the holes on 16-inch centers. You can hang the board on the wall above the freezer by using picture wire, or you can nail or screw it to the wall. Golf tees are inserted into the perforations, under headings that indicate the freezer's contents.

Each time a package is removed, a tee is pulled out. When the freezer is restocked, put the tees back into the board.

Lampshade Hint

Did you ever use one of your vacuum cleaner tools on your lampshades? It's the simplest thing in the world to whisk the dust from them. Dusting by other methods often hurts a lampshade. It takes a very light touch to life the dust from a delicate texture. The vacuum cleaner has just that "touch."

Painting Tip

Before starting to paint ceiling loosen the base plates of all lighting fixtures so that they can be dropped down a few inches. Drape the fixtures with an old cloth or large sheet of paper to protect them against paint splatters.

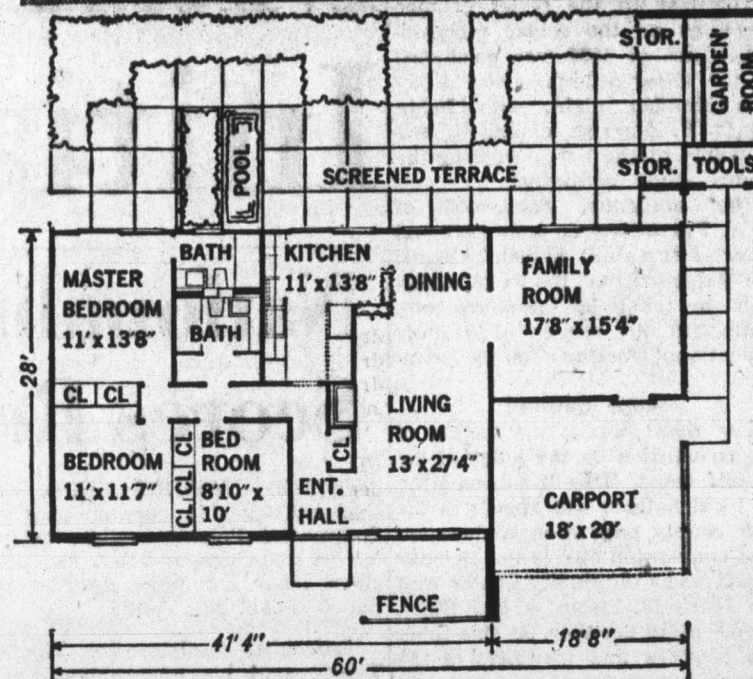
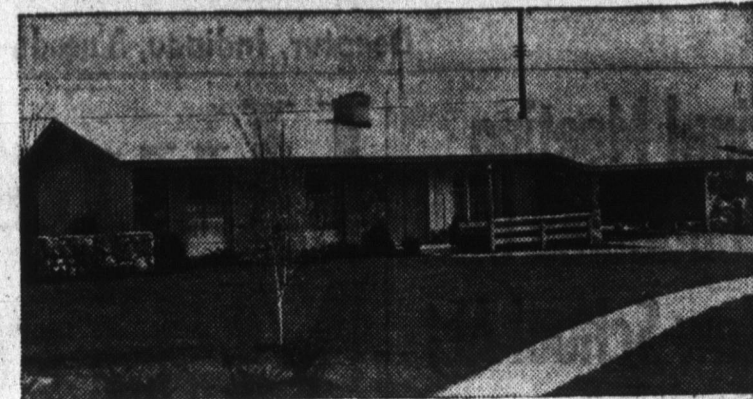
New Tile Colors

Quarry tile, the six-inch squares of dull brick red you often see as pavement for luxury porches and terraces, is now being produced in new colors—dark brown, buff, blue, green and sand shades.

Stop Sputtering Candles

To prevent candles from sputtering, dip them in fresh white shellac which has been thinned. This will also keep the candles from bending while stored.

Blueprints Now Available For Prize-Winning House



Blueprints and building specifications are available for one of 1959's most outstanding home designs—a national award winner that has been planned for year-round comfort as well as good looks.

The house, pictured above with floor plan, is fully air-conditioned, has three bedrooms, living and dining rooms, a large kitchen, and family room.

One of its most spectacular features is a roofed, screened rear terrace, 57 by 20 feet, that runs the entire length of the house.

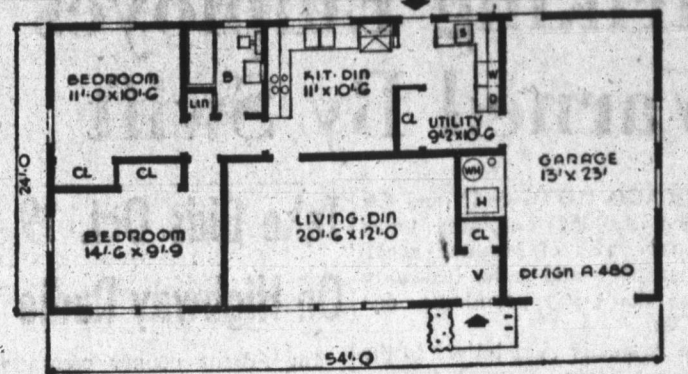
Designed for builder Robert P. Gerholz of Flint, Mich., the house now is being built in Gerholz' Westgate Park development. It sells for \$28,450 on quarter-acre lots.

Much of the house's exterior beauty comes from its board and batten plus fieldstone siding, double-hung windows of ponderosa pine flanked by louver shutters, and white asphalt roof.

The architect points out that the roof actually performs more functions than its usual one of protecting the house from



A SMALL HOUSE PLANNING BUREAU DESIGN NO. A-480



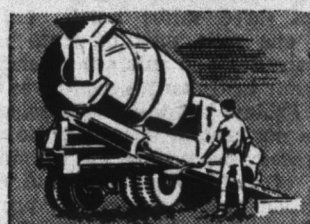
DESIGN A-480. Here is a small home with generous rooms, including two bedrooms with wardrobe type closets and a kitchen with ample space for dining.

The utility room serves as a rear entrance, provides access to the attached garage and has a washer, dryer, built-in utility sink, work counter, storage cabinets and counter so planned that there is still room to do the ironing. The heater, water heater and softener are accessible from the garage.

Smart simplicity marks the exterior with neutral asphalt shingles, the distinctive ships-prow gable ends and wide shingle siding. Floor area is 972 square feet, cubage 10,206 cubic feet.

For further information about DESIGN A-480, write the Small House Planning Bureau, St. Cloud, Minn. In Canada, the Small House Planning Bureau of Canada, St. John, New Brunswick.

READY MIXED CONCRETE



We're old hands at mixing concrete precisely to order. Call us . . . and get delivery when you want it where you want it.

YOST READY-MIX CONCRETE

10% Discount
ON ALL READY MIX CONCRETE

CALL 3-3114

GET OUR PRICES—PROVE FOR YOURSELF
YOU GET THE BEST FOR LESS!

Yost Gravel Readymix, Inc.

Phone 3-3114 Decatur R. R. 1

CALL or SEE ASHBAUCHERS'

INSTALLERS OF THE FINEST
HEATING EQUIPMENT IN
DECATUR for 44 YEARS.

**IF YOU RECEIVED A
GAS PERMIT . . .**

**Now Is The Time
To Have Your
NEW GAS FURNACE
OR
CONVERSION BURNER
Installed**

FREE ESTIMATES!

ASHBAUCHERS' TIN SHOP

Established 1915
HEATING—ROOFING—SIDING—SPOUTING
116 N. 1st St. Phone 3-2615

ARNOLD LUMBER CO., INC.

Gigantic Fall SALE

NOW IN PROGRESS!

Regular \$5.95

TOILET SEAT
Each \$3.88

9" x 9" ASPHALT

FLOOR TILE
Each 5c
"B" Colors

ALUMINUM COMBINATION

STORM DOORS
2/8 x 6/8 \$24.50
3/0 x 6/8

Reg. \$6.95 — 6-Foot

STEP LADDER
Each \$4.66

Regular \$1.49—WHITE

**BEDROOM
LIGHT FIXTURE**
Each 99c

12" x 12" — 1/2" WHITE

CEILING TILE
Each 11c

Reg. \$5.95 WHITE

OUTSIDE PAINT
GAL. \$4.88

Regular \$9.19

FLOOR JACKS
Each \$7.99

ARNOLD LUMBER CO., INC.

"Your Complete Builders Supply Department Store"
Winchester Street at Erie R. R. Crossing Decatur, Ind.

**your best
buy in
house
paint...**

SHERWIN-WILLIAMS

- Now better than ever
- Stretches the years between paint jobs
- For all types of exterior surfaces
- Easier than ever to apply
- Beautiful, fade-resistant colors
- Endorsed by leading painters

\$7.35 GAL.



SHERWIN-WILLIAMS
PORCH AND FLOOR
ENAMEL

Top-quality enamel for indoor and outdoor wood and cement floors, decks and steps. Stands up under tough weather and wear.

\$2.23
QT.

SHERWIN-WILLIAMS PAINTS

222 N. 2nd St.

Phone 3-2841

**CASH
AND
CARRY**

LUMBER SPECIALS

SANDED PLYWOOD

1/4" AD	Sheet \$3.20
3/8" AD	Sheet \$4.32
1/2" AD	Sheet \$5.60
5/8" AD	Sheet \$6.40
3/4" AD	Sheet \$7.52

Sheet

SHEATHING GRADE

30 Sheets or More

1/4" Birch	\$15.68	5/16"	Sheet \$2.44
3/8" Red Oak	\$19.20	3/4"	Sheet \$2.99
1/2" Mah. Rotary	\$14.40	1/2"	Sheet \$3.92
3/4" Mah. Ribbon	\$19.20	3/8"	Sheet \$4.48
3/4" Walnut	\$30.40	3/4"	Sheet \$5.92

No. 2 DIMENSIONAL LUMBER

2 x 4's \$108.00 M | 2 x 6's \$116.00 M

STORM WINDOWS

Triple Track. Self-storing. Tilt action.
Customized Fit. Smooth, silent efficiency.

\$12.95

STORM DOORS

Full-inch Thick. Piano Hinge.
Complete

\$29.50

ROOFING

3 & 1 Plain	per sq. \$6.50
10 Year Warranty	
3 & 1 Self Seal	per sq. \$7.95
10 Year Warranty	

METAL ROOF

1 1/4" Corr.	per sq. \$9.95
2 1/2" Corr.	per sq. \$10.45

INSULATED SIDING

WOODSULITE	Bag \$17.95
CEDAR GRAIN	per sq. \$18.25

Enalemen Spruce CAR SIDING 1 x 8—\$165 M

ADAMS BUILDERS SUPPLY, INC.

309 S. 13th St.

Phone 3-3104