

## Gross Income Surtax Favored To Aid Cities

INDIANAPOLIS (UPI) — City officials from throughout Hoosierland were agreed today on a gross income surtax for cities and towns instead of higher property taxes as a means of providing more local revenue.

The Indiana Municipal League voted in favor of a resolution Tuesday which "approves in principle the levy of a gross income surtax by the state of Indiana, the proceeds of which should be allocated and paid exclusively to the cities and towns."

"The property tax, as a source of income to cities and towns, has reached a point of saturation and should no longer be looked to as the primary source for meeting the financial needs of cities and towns," the resolution stated.

The resolution was one of 25 approved by the delegates. The major tenor of the resolutions was lack of money and lack of means of getting it.

One of the resolutions passed by Hoosier mayors and other municipal officials renewed a demand for some cigarette tax receipts, all of which now go to the state.

**Handley Indicates Approval**  
Governor Handley in his opening address appeared to agree that that the income surtax was a remedy for municipal financial ills. He said he favored the surtax, if the local residents wanted it.

In other opening-day activity at the two-day meeting, officials elected Mishawaka Mayor Albert L. Doyle president succeeding Lafayette Mayor Kenneth R. Sander. Mayor Evan Crawley of Greencastle and Mayor Thomas L. Lemon of Bloomington were named vice presidents; Ivan H. Brinegar, Bedford, secretary-treasurer, and Sylvia A. Sapire, Indianapolis, recording secretary. Named directors were Indianapolis Mayor Charles H. Boswell, Richmond Mayor Roland H. Cutler, LaPorte Mayor Everett A. Koomler, Connorsville Mayor Roy L. Haley Jr., Crown Point Mayor Marvin G. Erlenbach and Brookville Clerk-Treasurer Donald M. Russell.

**Toll Belt Lines**  
The municipal officials suggested toll road superhighways in and around cities as a possible solution to the shortage of highway construction funds. They approved a resolution "favoring legislation to authorize the construction of thruways and freeways, to be paid for by borrowed funds derived through bond issues to be retired by the collection of an annual gasoline tax or wheel tax, or by toll."

The League reaffirmed its support of legislative reapportionment "as one of the principle planks" of its program.

It also called for "preparation and adoption of a new comprehensive cities and towns act" noting that "numerous inconsistent, piecemeal, conflicting and special acts have been passed by the Legislature since 1905, resulting in a confusing hodge podge of statutes on municipal law which are difficult to work with and impossible to rely upon."

Other resolutions would: Set up a city inspection of motor vehicles and collect a fee for the inspections.

Prepare a 1961 bill which would authorize cities to retain certain fines assessed for violation of traffic regulations which now go to the state.

Favor legislation creating a town court with a judge to be named by the town board.

Call for a metropolitan study commission to be formed by the 1961 Legislature, and also to gain reassessment of real estate.

Oppose the Indiana Public Service Commission's plan for having municipally owned water works pay for extensions to newly developed areas.

## Game Called

CAMBRIDGE, Mass. (UPI) — Since 1868 Harvard and Yale have played 228 baseball games. Only one of them ended in a tie—1-1 in 11 innings in 1905.

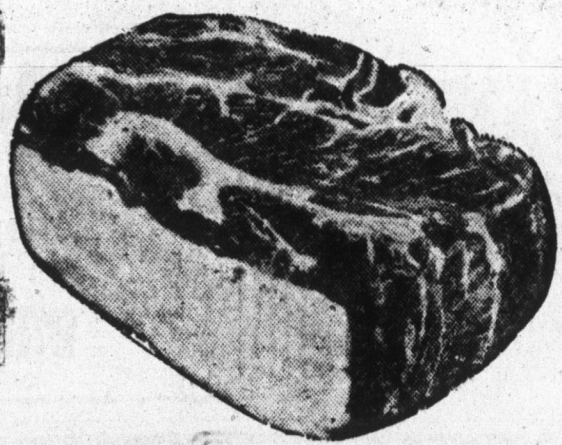
## MILNER HOTELS

Ask for The MILNER "450" Ask for The MILNER "550"

- Modern Furniture
- The "550" has more
- Freshly Decorated Rooms
- Air Conditioned Rooms
- New Wall to Wall Carpets
- Free Televisions
- Modern Tile Bath
- Free morning paper
- Clean Comfortable Rooms
- Complete hotel service

Price \$4.50 Price \$5.50  
For The Thrifty ECONOMY PRICES  
Write now for your credit card.  
H. J. Baldin, Pres., Milner Hotels  
30th Floor, Bank Tower  
Detroit, 26, Mich.

# Better Meals Build Better Families!



"SUPER-RIGHT" QUALITY

## BEEF CHUCK ROAST

ARM OR ENGLISH CUT ROASTS

59¢

BLADE CUTS

CLOSED SUNDAY AS USUAL

49¢

lb.

"SUPER-RIGHT" QUALITY 14 TO 16 LB.

## SMOKED HAM

WHOLE OR BUTT

49¢

lb.

SHANK PORTION

39¢

lb.

"SUPER-RIGHT" QUALITY

Ground Beef . . . 49¢

"SUPER-RIGHT" QUALITY FLAT MEAT

Boiling Beef . . . 19¢

Beef Stew Meat "SUPER-RIGHT" BONELESS . . . 79¢

Braunschweiger "SUPER-RIGHT" BY-PIECE . . . 49¢

Sliced Bacon ALL GOOD GRADE "A" . . . 45¢

Cod Fillets CAP'N JOHN FROSTED . . . 45¢

Sliced Bacon "SUPER-RIGHT" THICK SLICED . . . 2 lb. 79¢

Oyster Stew CAP'N JOHN FROSTED . . . 3 10-oz. cans \$1.00



NATIONAL BETTER BREAKFAST MONTH

Sliced Bacon "SUPER-RIGHT" OUR FINEST . . . 49¢  
Orange Juice A&P BRAND . . . 46-oz. can 47¢  
Corn Flakes KELLOGG'S OR POST TOASTIES . . . 17-oz. pkg. 29¢  
Quick Oats SUNNYFIELD . . . 5 lb. bag 49¢

"IT'S NATIONAL DOG WEEK"

DAILY

## DOG FOOD

3 FLAVORS 12 1 LB. CANS IN CTN. 99¢

Daily Kennel Meal . . . 5 lb. bag 45¢  
Daily Dog Meal . . . 25 lb. bag \$1.99  
Orleans Lollipops . . . 2 7-oz. pkgs. 35¢

## FROZEN FOODS

A&P BRAND 6-OZ. CANS  
Orange Juice 6 FOR \$1.19

Banquet Dinners BEEF, CHICKEN OR TURKEY . . . ea. 49¢  
Green Beans A&P BRAND . . . 6 9-oz. pkgs. 89¢  
Red Raspberries . . . 2 10-oz. pkgs. 49¢

FACIAL SIZE  
Praise Soap . . . 2 for 31¢

BATH SIZE  
Praise Soap . . . 2 for 45¢

3c OFF LABEL  
Fab Detergent . . . 1ge. 29¢

WITH CHINA  
Ad Detergent . . . giant 77¢

FACIAL SIZE		BATH SIZE	
Lux Liquid	12-oz. can 36¢	Lux Soap	4 for 43¢
		Lux Soap	2 for 31¢
		Lifebuoy Soap	4 facial size 45¢

McINTOSH, WEALTHY, JONATHAN or RED DELICIOUS

## APPLES

YOUR CHOICE

4 LB. BAG 39¢

Potatoes U.S. NO. 1 GRADE MICHIGAN . . . 50 lb. bag \$1.19  
Tokay Grapes CALIFORNIA FLAME RED . . . 2 lbs. 29¢  
Yellow Onions U.S. NO. 1 GRADE . . . 10 lb. bag 39¢

Golden Yams OR SWEET POTATOES . . . lb. 10¢  
Pascal Celery MICHIGAN 24 SIZE . . . stalk 23¢  
Fresh Carrots CELLO PACK . . . 2 lb. bag 25¢

A&P RED SOUR PITTED

## CHERRIES

Pineapple Juice

3 46-OZ. CANS \$1.00

Sweet Peas GREEN GIANT 3c OFF LABEL . . . 4 17-oz. cans 59¢  
Sweet Peas STOKELY HONEY POD . . . 4 17-oz. cans 59¢  
Niblet Corn GOLDEN WHOLE KERNEL . . . 2 12-oz. cans 35¢  
Niblet Mexicorn CORN & PEPPERS . . . 2 12-oz. cans 35¢  
Golden Corn A&P BRAND WHOLE OR CREAM 2 16-oz. cans 29¢  
Mayonnaise ANN PAGE SPECIAL LABEL . . . qt. 49¢  
Sunshine Cheez its . . . 6 1/2-oz. pkg. 21¢  
Ritz Crackers NABISCO . . . 12-oz. pkg. 29¢  
Club Crackers HEKMAN'S . . . 1-lb. pkg. 39¢  
Green Beans OR WAX BEANS IONA BRAND . . . 15 1/2-oz. can 10¢  
Sweet Peas IONA BRAND . . . 17-oz. can 10¢

Sliced Pineapple A&P BRAND . . . 29-oz. can 35¢  
French Dressing KRAFT'S . . . 16-oz. bot. 43¢  
Blue Bonnet MARGARINE 2c OFF LABEL . . . 1-lb. ctn. 25¢  
Cake Mix BETTY CROCKER SUPREME . . . 3 20-oz. pkgs. \$1.00

Save During A&P's

### Hi-C DRINK SALE

ORANGE OR GRAPE

3 46-OZ. CANS 85¢

CRESTMONT LIME OR ORANGE 1/2 GAL.  
Sherbet . . . 49¢

Colby Cheese MILD WISCONSIN . . . lb. 49¢  
Cheese Food CHED-O-BIT AMERICAN . . . 2 lb. PKG. 69¢

OPEN FRIDAY & SATURDAY till 9 P.M.

All Prices in this Ad Effective Thru Sat., Sept. 26th  
THE GREAT ATLANTIC & PACIFIC TEA CO.

COME SEE . . .  
YOU'LL SAVE  
AT A&P!

AMERICA'S DEPENDABLE FOOD MERCHANT

# A&P

## 100<sup>th</sup> BIRTHDAY Celebration

1859-1959