

Give Home Checkup Before Indoor Entertaining Begins

Cooler weather marks the return to indoor entertaining, so why not put the home in shipshape condition for coffee klatches and bridge parties which are in the offing?

One good way to begin is to plan in advance. Check the home, inside and out, for chores which should be done and make a list of them. Then assign certain jobs to various members of the family.

Dad, for example, should be captain of all outside activities, as well as vice president in charge of major repairs inside the home. Mom should confine her work to such lighter chores as polishing furniture, removing draperies for cleaning and deciding what colors she wants on painted walls.

Before any of this work begins, however, it would be well for the entire family to scout the home and the grounds around it for things which can be sold to the second-hand man or given to the garbage collector. The idea is to remove all unwanted items from the home before the actual clean-up begins, so that such things won't be in the way.

Many waste materials may be disposed of by burning, but don't use open bonfires. If newspapers, leaves or other materials are to be set to flame, put them in a galvanized steel rubbish burner. These steel burners will keep outdoor fires safely confined.

For the same reason, don't store trash in cardboard or wooden or

Colonial Style Goes Modern

Modern is traditional in home design today.

Odd statement? Not when you analyze it. Today's preferred style for homes is rapidly becoming almost an exact replica—with some modern innovations—of the traditional, two-story colonial house grandmother lived in.

How does that make it modern? Because today's average family needs: 1) economy, and 2) more space. That's just what the old-fashioned Colonial-style house offers.

New Jersey home builder Jacob R. V. M. Lefferts sums it up when he points out that many new house buyers today are buying their second home: "The first buyer is buying housing. The second buyer is buying a home."

The second buyer is wiser, more demanding. He comes supplied with more furniture, more everything. More important, he comes supplied with children, and needs the space a traditional style house offers.

Other home builders agree. Among them are William Levitt, of the famous Levittowns, and Fox and Jacobs, the Southwest's most successful home building team.

Both have switched to traditional styles with some modern innovations, such as family rooms and air conditioning.

In making the transition, both have switched to windows of ponderosa pine and wood panel doors in Colonial styles to give their homes a traditional appearance.

Both of these building firms report that the best sellers among all their models are the houses with the most traditional styling.

paper boxes. Put all such materials in covered galvanized steel garbage and ash cans. These are completely fireproof, and may be easily emptied by the trash collector or the next time his truck comes around.

When the inspection for waste materials is made, look also for repairs which may be required on the home heating system. A faulty heating system is dangerous, as well as expensive. Major repairs should be made by a competent service man before the heating season begins.

Housecleaning is never fun, but it can be a satisfying project if the entire family participates and all work is planned carefully in advance. Even the children can help by cleaning out toy boxes and helping Mom with furniture polishing or Dad with his yard work.

Give Windows Star Billing If House Is to Be Big Hit

Windows are such an important part of the home that families planning to build or remodel a house should learn everything they can about them.

Windows not only let in light and air but are vital to the appearance of a house inside and out. Their size, shape, and placement play major roles in furniture arrangement and interior decoration.

Carefully chosen and placed windows enhance the value and enjoyment of a house when they look out upon a scenic view or a colorful garden.

Quality, tight-fitting windows also can mean savings in heating fuel and housecleaning chores by eliminating drafts and dust.

Windows are a permanent part of the house. Once chosen and installed, they can be replaced only at high cost.

To help families choose windows that will serve them best in all these ways, here are the styles of windows available in ponderosa pine, and a description of their uses and advantages.

Double-hung—Much in demand for Colonial and traditional styles of architecture, this is the familiar window that raises from the bottom and lowers from the top. Models also are available from building material dealers for contemporary homes.

Awning—This window, which opens up and out for full ventilation, is popular for modern homes. Its pane forms a protective "awning" that keeps rain out when the window is open.

Hopper—Similar to the awning window, the hopper opens inward and downward. Awning and hopper windows are used together in banks to form a wall of windows, as the drawing shows. When installed low in a wall, the hopper window directs air downward, eliminating drafts.

Casement—Opening outward and to one side as a door does, the casement window permits full ventilation and is a favorite for both traditional and contemporary architecture. One versatile window of ponderosa pine often installed as a casement window actually is a three-way model. Installed upright, it is a casement window. On its side, it becomes an awning window. Turned over, it serves as a hopper.

Sliding—This window opens by sliding to one side, and has become a favorite for walls of windows. Sliding windows of ponderosa pine are engineered to open at a touch, yet close tightly.

Fixed Sash—A window which does not open, the fixed sash generally is used as a picture window where ventilation is not needed. Often it is flanked with other styles that permit ventilation.

Double-hung-Awning—This window has the appearance of a double-hung window, yet operates up and outward like an awning model. Its chief advantage is that it permits traditional styling with full ventilation. Models also are available for contemporary architecture.

ing window, the hopper opens inward and downward. Awning and hopper windows are used together in banks to form a wall of windows, as the drawing shows. When installed low in a wall, the hopper window directs air downward, eliminating drafts.

Casement—Opening outward and to one side as a door does, the casement window permits full ventilation and is a favorite for both traditional and contemporary architecture. One versatile window of ponderosa pine often installed as a casement window actually is a three-way model. Installed upright, it is a casement window. On its side, it becomes an awning window. Turned over, it serves as a hopper.

Sliding—This window opens by sliding to one side, and has become a favorite for walls of windows. Sliding windows of ponderosa pine are engineered to open at a touch, yet close tightly.

Fixed Sash—A window which does not open, the fixed sash generally is used as a picture window where ventilation is not needed. Often it is flanked with other styles that permit ventilation.

Double-hung-Awning—This window has the appearance of a double-hung window, yet operates up and outward like an awning model. Its chief advantage is that it permits traditional styling with full ventilation. Models also are available for contemporary architecture.

Double-hung—Much in demand for Colonial and traditional styles of architecture, this is the familiar window that raises from the bottom and lowers from the top. Models also are available from building material dealers for contemporary homes.

Awning—This window, which opens up and out for full ventilation, is popular for modern homes. Its pane forms a protective "awning" that keeps rain out when the window is open.

Hopper—Similar to the awning window, the hopper opens inward and downward. Awning and hopper windows are used together in banks to form a wall of windows, as the drawing shows. When installed low in a wall, the hopper window directs air downward, eliminating drafts.

Casement—Opening outward and to one side as a door does, the casement window permits full ventilation and is a favorite for both traditional and contemporary architecture. One versatile window of ponderosa pine often installed as a casement window actually is a three-way model. Installed upright, it is a casement window. On its side, it becomes an awning window. Turned over, it serves as a hopper.

Sliding—This window opens by sliding to one side, and has become a favorite for walls of windows. Sliding windows of ponderosa pine are engineered to open at a touch, yet close tightly.

Fixed Sash—A window which does not open, the fixed sash generally is used as a picture window where ventilation is not needed. Often it is flanked with other styles that permit ventilation.

Double-hung-Awning—This window has the appearance of a double-hung window, yet operates up and outward like an awning model. Its chief advantage is that it permits traditional styling with full ventilation. Models also are available for contemporary architecture.

It's Easy Matter Now To Clean Oak Floors

How do you clean your oak floors? If you use the soap and water scrubbing routine, it's time for a change.

That treatment is—or should be—a thing of the past, according to home maintenance specialists. They point out that it's not only hard work; it's unnecessary and it's bad for the floors.

Modern materials and methods for floor care make oak floor-keeping a simple matter. Furthermore, they're much kinder to the floors, keeping them clean and sparkling and extending the life of the finish over a long period.

Repeated soap-and-water scrubbing, the experts explain, tends to raise the grain of the wood and roughen the surface. It also can mar the finish and shorten its span of serviceability.

The new easy way to clean oak floors is to use one of the modern liquid wax base preparations which clean and wax at the same time.

There are two basic types of such preparations, one having about three times as heavy wax content as the other. Functioning in the same way, they remove dirt, stubborn marks and old, solid wax far more efficiently than soap and water. Additionally, they leave a protective coating of wax which can be polished to a pleasing luster.

Directions for using them may vary slightly among different manufacturers. The following procedure, however, is typical:

Pour a little of the liquid on the floor, covering just a small area at a time. Spread it around thoroughly with a soft cloth or a long-handled applicator. Then soak up the loosened dirt and residue with a clean dry cloth. After wiping the floor dry, polish lightly.

Some authorities, such as the National Oak Flooring Manufacturers' Association, point out that when the cleaner with the light wax content is used, it is a good plan to follow up with a separate application of paste wax or liquid rubbing wax. This affords greater protection to the finish.

In the average home the cleaning-waxing treatment need be repeated only about two or three times a year. Heavily trafficked areas can be touched up more often if necessary.

Occasional polishing between treatments renews the sparkle. And a quick daily once-over with an untreated dust mop helps prevent dirt and dust from being ground into the finish.

Builders say that the ease and effectiveness of this upkeep routine account in part for the overwhelming popularity of oak floors today.

For Easy Care

Winterize Your Beautiful Oak Floors

Your fine oak floors, like your automobile, will perform far better during the rough winter months if you give them a modern winterizing treatment, home maintenance specialists say.

By performing better the experts mean the floors will be much easier to keep clean and sparkling even though subjected to the almost inevitable tracking in of snow and dirt. All they'll need is prompt wiping up of any "tracking" and a light once-over occasionally with a dry cloth or untreated dust mop.

For the average oak floor with finish in good condition, winterizing is a relatively simple chore. It consists merely of "dry cleaning," waxing and polishing.

Forget the old-time soap-and-water scrubbing or mopping routine, the experts advise. It's not only hard work but it's bad for the floors. It tends to mar the appearance of the finish and to raise the grain of the wood, causing a rough surface.

In "dry cleaning" by the new easy method you actually clean and wax at the same time. An approved wax-base liquid-cleaner will remove stubborn dirt, marks and old wax.

Just pour a little on the floor, a small area at a time. Spread it around well with soft cloth or long-handled applicator. With a clean dry cloth soak up the loosened dirt and residue. The wipe the floor dry and polish with clean soft cloth, electric polisher or long-handled applicator equipped with a dry pad.

That's all there is to it if you use the type of cleaner containing a heavy wax content. Some homemakers, however, prefer the kind of cleaner with a thinner wax content. When this type is employed, it is advisable to follow up with a separate coating of wax.

They Go Together

Delicate glass and dainty pottery fit best in a room with fine-textured fabrics and furniture with delicate lines.

Use the Right Primer

Priming is a must in preparing all new surfaces for painting. Primers fall into three main classifications—plaster, wood and metal.

Unmovable House Creates Problem, Owner Discovers

In this era of new expressways and other highways springing up in all parts of the country, the question of a home's mobility can become an important issue to the owner.

A Texas man discovered this to his considerable sorrow. He had built a lovely basement-less \$50,000 home on a slab. Shortly after its completion he was notified that a highway was to be routed through the home site. The authorities offered him \$10,000 to move the house. He owned several acres of adjacent land where the structure might have been relocated.

But since the house was built on a slab foundation, it could not be moved.

At last reports he was contemplating the problem, with dismantling as the only solution offered. Builders explain that had the home been of conventional joist-and-sub-floor construction, either with a basement or with crawl space beneath, it easily could have been moved to another site.

Radiator Leg-Rest

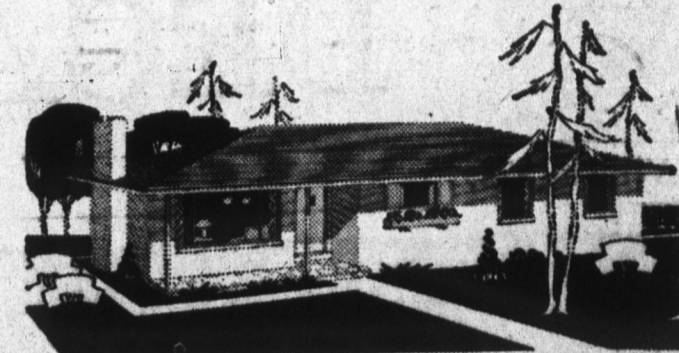
When you cover a floor with linoleum or any type of tile, don't let the legs of a radiator rest directly on the flooring material. The right way to handle this job is to make a round hole in the flooring and set a metal washer into this opening. The leg of the radiator then rests on the washer rather than the flooring.

Removing Grease

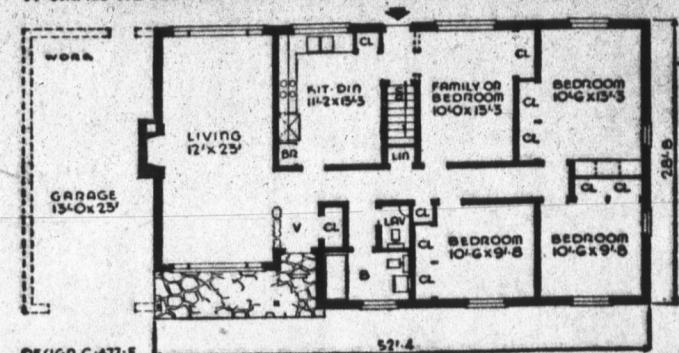
To remove grease spots from tablecloths, dust a little talcum powder on the stain. Let it set for an hour, then dust off. The powder will absorb the grease.

PLYWOOD TIP

When you cut plywood, apply a strip of masking tape to the underside of the wood along the line of cut. This prevents splitting and fraying.



A SMALL HOUSE PLANNING BUREAU DESIGN NO. C-477-F



DESIGN C-477-F. Versatility is the keynote of this plan. The dual bath combines economy in plumbing with an accessibility of location. The kitchen allows ample space for dining and access to the front vestibule.

An attached garage is indicated on the blueprint plans and helps show how the covered flagstone porch serves as a covered passage to the house and lets the garage, if desired, become integral part of the exterior design. Family needs would determine whether you would want a four bedroom house or a three bedroom house with an excellently located family room.

The all-brick exterior is combined with hip roof and colorful asphalt shingles. Floor area is 1444 square feet, cubage 25,992 cubic feet.

For further information about DESIGN C-477-F, write the Small House Planning Bureau, St. Cloud, Minn. In Canada, the Small House Planning Bureau of Canada, St. John, New Brunswick.

Clogged Gutters Present Danger

Roof gutters clogged by falling leaves can be a potential danger to a house. If water standing in the gutters freezes, it can act as a dam which may cause water to back up under the edge of the roof and leak into the house.

Two safeguards against this are:

1. Keeping gutters clear of leaves and other debris.
2. Properly applied roofing. Recommendations for application of asphalt shingles, the most widely used roofing for homes, call for an extra layer of waterproof material under the shingles at the eaves.

This is an "eaves flashing strip" recommended for use in addition to the usual underlayment, metal

drip edge and starter course of shingles, wherever there is danger of freezing temperatures creating ice dams along the eaves. When asphalt shingles are then applied according to specifications, the roof will have a long, trouble-free life.

Plants Become Room Dividers

One of the most striking new trends in home design is indoor planting, says the American Association of Nurserymen. Plant boxes frequently are used as room dividers, are built into entrance foyers, and provide a decorative touch for kitchens. Your local nurseryman can suggest many different plants suited for indoor cultivation.

Your Builder Will Do Quality Work

WITH

YOST READY-MIX CONCRETE

10% Discount ON READY MIX CONCRETE

CALL 3-3114

GET OUR PRICES—PROVE FOR YOURSELF YOU GET THE BEST FOR LESS!

Yost Gravel Readymix, Inc.

Phone 3-3114 Decatur R. R. 1

USE YOUR

GAS PERMIT

.... NOW

FOR YOUR NEW

GAS FURNACE

OR

CONVERSION BURNER

CALL or SEE

ASHBAUCHERS'

INSTALLERS OF THE FINEST HEATING EQUIPMENT IN DECATUR FOR 44 YEARS.

FREE ESTIMATES!

ASHBAUCHERS' TIN SHOP

Established 1915 HEATING—ROOFING—SIDING—SPOUTING 116 N. 1st St. Phone 3-2615

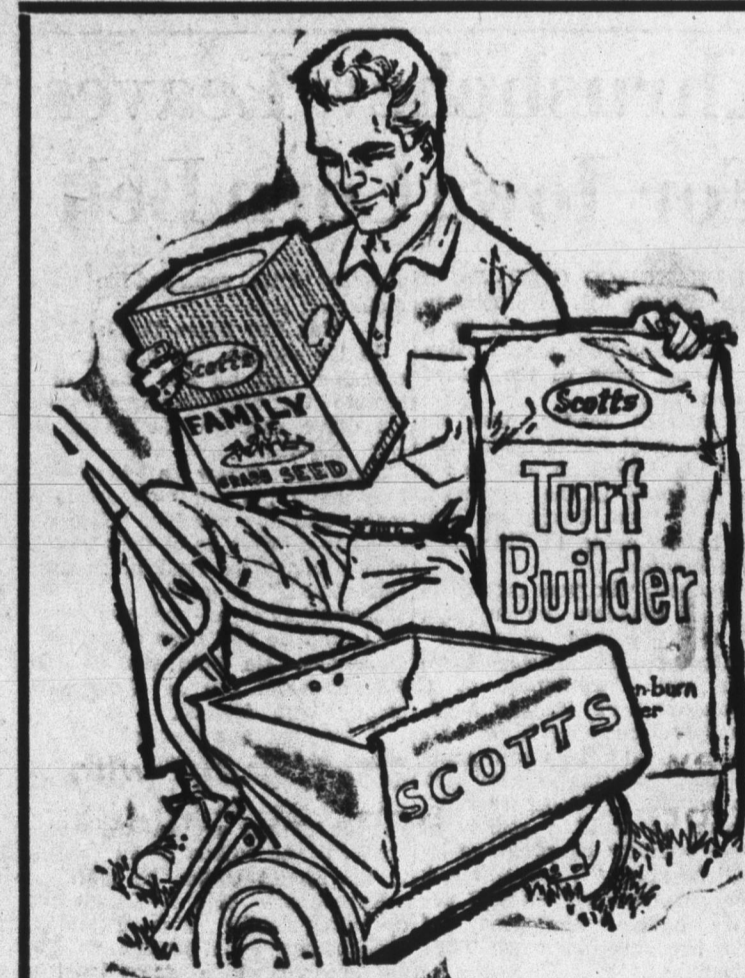
READY MIXED CONCRETE IS TAILORED FOR THE JOB

DECATUR READY-MIX CONCRETE!

IS HIGH-QUALITY CONCRETE, SCIENTIFICALLY DESIGNED and MIXED TO FIT THE SPECIFICATIONS FOR THE PARTICULAR JOB

DECATUR READY-MIX INC.

E. OAK and FORNAX Phone 3-2561



why now is the best time to seed

This is nature's time to seed. The soil is warm, the weather right. There are weeks of good growing ahead. Plump, vintage-harvest FAMILY is 100% perennial, like all Scott's seed. Builds a handsome lawn that gives good wear, needs little care. Non-burning TURF BUILDER steady-feeds new grass and old. Can be applied same day you seed. Takes just 1 hour to seed and feed with the time-saving Scott's Spreader!



Family Seed Turf Builder 1250 sq. ft. 6.45 5000 sq. ft. 4.75

Note: 7.00 on a Scott's Spreader! PAINTLY, TURF BUILDER and regular 16.00 (500) Spreader together now only 21.35

HABEGGER HARDWARE

WHERE OLD FASHIONED COURTESY PREVAILS 140 MONROE ST. PHONE 3-3716 DECATUR, IND.

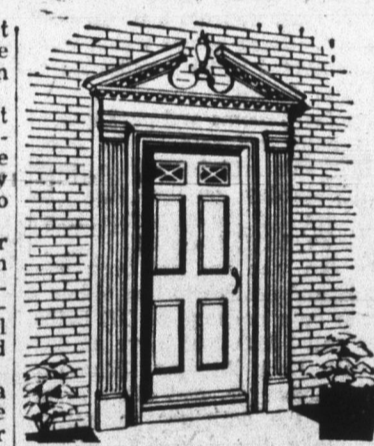
Entranceway Focal Point Of Home's Exterior Beauty

Any architect worth his salt knows that a front entrance to a home must be more than just a door.

The entrance is the focal point of interest in exterior appearance. What's more, it is the house's first "welcome" to family members coming home and to arriving guests.

Today, any home, old, new, or still on the drawing boards, can have a beautiful wood entranceway that can be purchased directly from building material dealers, ready to be assembled and installed.

Entranceways of ponderosa pine, such as those shown in the drawings, plus dozens of other styles to fit modes of architecture from traditional through modern, come packaged and "semi-K.D." (knocked down). They are designed to take advantage of the full beauty of



Colonial-style entranceway.

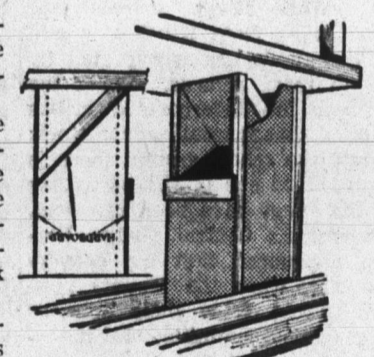
wood, with finely reeded pilasters, intricately worked pediments, caps and heads, and perfectly proportioned sidelights.

Here's How To Make A Laundry Chute

This laundry chute can be constructed of 2"x4" lumber and 1/2" tempered hardboard panels. Tempered hardboard is specified since it will withstand excessive humidity.

The front, back and one side of the chute are lined with hardboard, as shown. The panel above the chute-outlet is placed on the exterior of the frame. The throw-out ramp is also made of hardboard, as is the top of the work table.

This splinter-free, smooth paneling is ideal for laundry chutes since clothes will not snag in transit.



the BRIGHTEST house on the block!

Sun-Proof

HOUSE PAINT

- FUME RESISTANT
- SELF CLEANING
- CONTAINS VITOLIZED OIL

BOWERS

HARDWARE, INC.

PITTSBURGH PAINTS, INC. 100% VITOLIZED OIL

FREE PARKING WHILE SHOPPING IN OUR STORE

Hardboard Cornices Easy To Make; Back In Vogue

Interior decorators report that window cornices are on their way back in vogue. Hardboard, with its smooth, splinter-free surface, easy workability, and low cost, is an ideal material to use for cornice construction.

Hardboard cornices can be fabricated with just the face and side wings, but it is wise if you put a hardboard cover on top of the unit as a dust barrier.

The design of the panel can be plain; scrolls may be cut in the bottom of the face panel, or you can nail strips to the face to achieve other designs. To construct the units, you can use hand tools or power equipment.