

Ike Reports Thursday By TV And Radio

WASHINGTON (UPI) — President Eisenhower's radio-television address to the nation Thursday night is expected to set the stage for next week's visit of Soviet Premier Nikita Khrushchev.

Administration officials said the President probably would explain the reasons for his invitation to Khrushchev and caution against expecting any dramatic developments or sudden solutions of cold war problems.

It also was considered likely that Eisenhower would request the American people to receive Khrushchev politely and correctly as befits a visiting head of state, no matter how strong their antipathies to the system he represents.

Eisenhower was meeting this morning with the American ambassador to the United Nations, Henry Cabot Lodge, who will escort the Soviet leader on his 12-day tour around the United States.

Officials said the President wanted to discuss the Khrushchev visit and the radio-TV speech with Lodge. But their talk also was said to have a bearing on the crisis in Laos and other matters of international interest.

The White House, in announcing the President would speak from 7:30 to 7:45 p.m., e.d.t. Thursday, said the address would be essentially a report on his tour of Europe during which he consulted major Allies in preparation for his talks with Khrushchev.

The President, having had a meeting of minds with European Allies, was said to want to make his position clear to the American people as he prepared for his critical discussions with the Soviet leader.

Hunter Too Quick On Draw, Shoots Self

RICHMOND, Ind. (UPI)—Robert Owens, 28, was faster than his target when he went squirrel hunting Monday. Spotting a squirrel as it appeared from behind a tree, Owens pulled the trigger of his rifle. But he forgot to raise the weapon and shot himself in the foot.

Youths Sentenced For Rape-Robbery

INDIANAPOLIS (UPI)—Ollie Webb Jr., 19, and Russell Hill, 17, Indianapolis, were sentenced to 18 years in prison Tuesday for the rape and robbery of an Indiana University coed April 22. Marion Criminal Court Judge Richard Salb handed down the stiff sentences after both youths had pleaded guilty to the charges. Salb said teen-agers who commit adult crimes "must be punished as adults."

First Negro City Attorney At Gary

GARY, Ind. (UPI)—Harry Schell, 48, was sworn in Tuesday as the first Negro city attorney ever to be appointed in Gary. Schell, assistant city attorney since 1953, was appointed by Mayor George Chacharis to replace Paul Piazza, who has been ill for several months.

INCREASED

(Continued on page two)

grade 8, 27. Last year, the reading was 35, 28, 24, 29, 20, 21, 28 and 16.

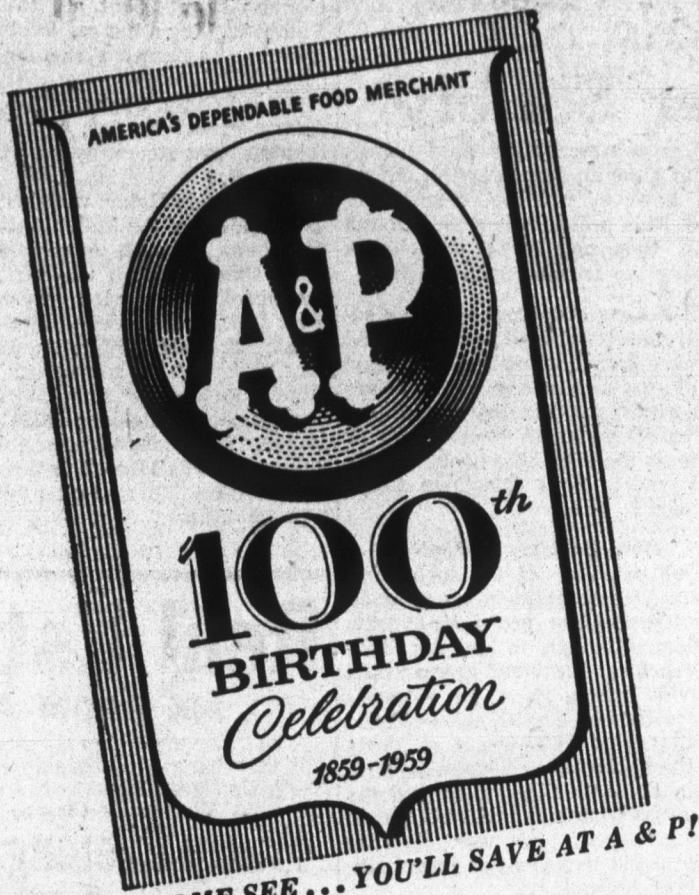
In high school, the figures were 40 freshmen, 48 sophomores, 30 juniors, and 39 seniors. In 1958-59, 47, 31, 41 and 29 were the readings respectively.

New figures from Jefferson township and Bobo conclude the county report except for Pleasant Mills.

The total Jefferson enrollment was 115 with the breakdown being: grade 1, 13; grade 2, 10; grade 3, 17; grade 4, 16; grade 5, 13; grade 6, 19; grade 7, 15; and grade 8, 12. No figures are available for comparison.

At Bobo, a total of 43 pupils in six grades. Five in the first, four in the second, nine in the third, six in the fourth, 10 in the fifth, and nine in the sixth.

**QUALITY
PHOTO FINISHING**
All Work Left
Before Noon
on Thursday—
Ready the
Next Day,
Friday,
at
**HOLTHOUSE
DRUG CO.**



COME SEE... YOU'LL SAVE AT A & P!

FRESH LAKE ERIE

Perch Fillets . . . lb. 49¢

Whitefish FRESH, EVISCERATED . . . lb. 39¢

Fish Cakes CAP'N JOHN FROSTED . . . 2 8-oz. pkgs. 57¢

✓ Check the FLAVOR! ✓ Check the PRICE!



FROZEN FOODS

BANQUET CHERRY OR

Apple Pie 22-oz. PIE 39¢

Nifty Waffles HEAT IN TOASTER . . . 5-oz. pkg. 10¢

Green Beans A&P BRAND . . . 6 pkgs. 89¢

Dole's Pineapple Juice . . . 2 6-oz. cans 39¢

Pineapple-Orange JUICE . . . 2 6-oz. cans 39¢

TASTY, THRIFTY, and TERRIFIC...

HOT or ICED!



Mild and Mellow 1-LB. BAG

EIGHT O'CLOCK 53¢

3 LB. BAG \$1.53

Rich and Full-Bodied 1-LB. BAG

RED CIRCLE 57¢

3 LB. BAG \$1.65

Vigorous and Winery 1-LB. BAG

BOKAR 61¢

3 LB. BAG \$1.77

Northern Tissue WHITE ONLY . . . 4 rolls 32¢

Ivory Flakes . . . giant 79¢

Ivory Snow 5¢ OFF LABEL . . . lge. 27¢

Camay Soap FACIAL . . . 4 for 43¢

Camay Soap BATH . . . 2 for 31¢

Mr. Clean 13¢ OFF LABEL . . . 28-oz. bot. 56¢

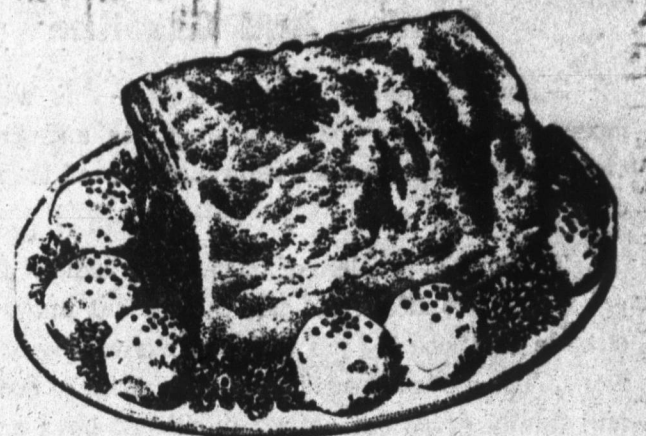
"SUPER-RIGHT" QUALITY

SMOKED PICNICS

SMALL
LEAN

LB.

29¢



"SUPER-RIGHT" QUALITY

PORK
LOIN

**ROAST
LB. 33¢**

ALL GOOD GRADE "A"

Sliced Bacon . . . lb. 39¢

Roasting Chickens FRESH DRESSED . . . lb. 49¢

Pork Chops "SUPER-RIGHT" CENTER CUT . . . lb. 69¢

Large Bologna "SUPER-RIGHT" CHUNK STYLE . . . lb. 39¢

Smoked Beef "SUPER-RIGHT" WAFER-SLICED . . . 4-oz. pkg. 29¢

Sliced Bacon "SUPER-RIGHT" THICK SLICED . . . 2 lb. pkg. 89¢

Sliced Bacon "SUPER-RIGHT" THIN SLICES . . . lb. 45¢

Beef Rib Roast 7 INCH CUT 4TH & 5TH RIB . . . lb. 69¢

Leg O' Lamb "SUPER-RIGHT" OVEN READY . . . lb. 69¢

"NEW PACK" EARLY GARDEN

DEL MONTE PEAS 4 17-oz. cans 59¢

GOLDEN WHOLE OR CREAM

Del Monte Corn 4 17-oz. cans 69¢

Del Monte Corn CREAM STYLE . . . 4 8-oz. cans 69¢

Lima Beans DEL MONTE GREEN . . . 4 8-oz. cans 59¢

Cling Peaches IONA SLICED OR HALVES . . . 4 29-oz. cans 99¢

Apricot Halves IONA UNPEELED . . . 29-oz. can 29¢

Sparkle Gelatin ANN PAGE 8 FLAVORS . . . 5 pkgs. 29¢

Tomato Ketchup ANN PAGE . . . 3 14-oz. bots. 50¢

Chocolates HERSHEY CANDY MINT COATED . . . 16-oz. pkg. 59¢

Spanish Peanuts A&P BRAND . . . 1-lb. pkg. 29¢

FLAME RED CALIFORNIA

Tokay Grapes

lb. **10¢**

FREESTONE 2 INCH AND UP

Elberta Peaches 4 lbs. 39¢

Sweet Potatoes OR YAMS . . . lb. 10¢

Cantaloupe VINE RIPENED 27 SIZE . . . 3 for \$1.00

Mich. Potatoes U.S. NO. 1 GRADE . . . 25 lb. bag 79¢

Bartlett Pears BUSHEL \$3.98 . . . 4 lbs. 39¢

Fresh Cabbage SOLID, CRISP . . . head 15¢

Yellow Onions U.S. NO. 1 GRADE . . . 10 lb. bag 49¢

Seedless Grapes FANCY WHITE . . . 2 lbs. 39¢

Surf . . . large 34¢

Breeze WITH CANNON DISH TOWEL . . . giant 75¢

Tide 5¢ OFF LABEL . . . giant 73¢

Handy Andy LIQUID CLEANER . . . qt. 69¢

Keyko Margarine . . . 1 lb. 28¢

Rinso Blue . . . giant 73¢

Condensed All . . . 10 lb. pkg. 2.29

Wisk Detergent 8¢ OFF LABEL . . . qt. 58¢

SLICED OR HALVES CLING DEL MONTE

Peaches . . . 3 29-oz. cans 89¢

Tomato Juice DEL MONTE . . . 46-oz. can 29¢

Del Monte Corn WHOLE OR CREAM . . . 4 8-oz. cans 49¢

Green Giant Peas 3¢ OFF LABEL . . . 4 17-oz. cans 59¢

Sweet Peas IONA BRAND . . . 17-oz. can 10¢

Green Beans IONA BRAND . . . 15½-oz. can 10¢

Popcorn A&P WHITE OR YELLOW . . . 2 lb. pkg. 25¢

dexo Shortening A&P'S OWN . . . 3 lb. can 69¢

Eat a Little Bit Better Breakfast

SUNNYFIELD

Pancake Flour 5 lb. bag 39¢

SUNNYFIELD

Quick Oats . . . 42-oz. PKG. 37¢

Cream of Wheat REG. OR INSTANT . . . 28-oz. pkg. 35¢

Orange Juice A&P BRAND . . . 46-oz. can 43¢

Prune Juice LADY BETTY . . . Qt. 39¢

Post Toasties CORN FLAKES . . . 18-oz. pkg. 29¢

Post's Alphabits . . . 8¼-oz. pkg. 23¢

Tang Breakfast Drink . . . 7-oz. jar 35¢

JANE PARKER 8 INCH

Cherry Pie reg. 59¢ 45¢

Oatmeal Cookies JANE PARKER 44 to 48 pkgs. 49¢

Potato Bread JANE PARKER . . . 1-lb. loaf 15¢

AGED WISCONSIN CHEDDAR

Sharp Cheese lb. 59¢

Blue Cheese DOMESTIC . . . lb. 59¢

Marvel Ice Cream . . . ½ gal. 59¢

All Prices in this Ad Effective Thru Saturday, Sept. 12th

YOUR GUARANTEE OF QUALITY

THE GREAT ATLANTIC & PACIFIC TEA COMPANY



Super Markets

1859 AMERICA'S DEPENDABLE FOOD MERCHANT 1959