



Folks everywhere call
Dutch Boy
"THE 5 year
HOUSE PAINT"

Get yours at

**HABEGGER
HARDWARE**
140 W. Monroe St.

FILTERS FOIL POLLEN
Many persons have found that air-conditioning relieves the effect of air-borne pollen, rose fever and hay fever. For this benefit alone they feel the purchase of air-conditioning is justified.

STA-CLEAN*
in STANDARD
Home Heating Oils
PROTECTS

your storage tank from rust and corrosion all summer long.

Call . . .
Charles Houk
AGENT
For Your Summer Fill.

PHONE 3-2309

Too Much Luxury, Says Soviet Press Low-Cost U.S. Home at Moscow Show Is Expected to Dazzle Doubting Russians

"Splitnik," the American-built home the Russian press says is "too luxurious" for the average American working man, will go on display July 26 in Moscow at the American National Exhibition.

The 3-bedroom, ranch-style house, which would sell in this country for \$11,000 to \$13,000 without land, is being built by All-State Properties, Inc., of Floral Park, N. Y., on Long Island.

Dubbed "Splitnik" because the Moscow model will be split by a wide central corridor to accommodate the expected crowds of Soviet citizens, the compact house provides a total living area of 1,144 square feet with kitchen, living room, dining room, three bedrooms, and one and one-half baths.

Built on a concrete slab, the house has wide window areas, and a low-pitched roof of white asphalt shingles. Although this smart, white roof may seem "too luxurious" to the Soviets, asphalt shingles are in use on most American homes today, providing the "luxury" of long-lasting protection from all kinds of weather, as well as the beauty of color and texture at low cost.

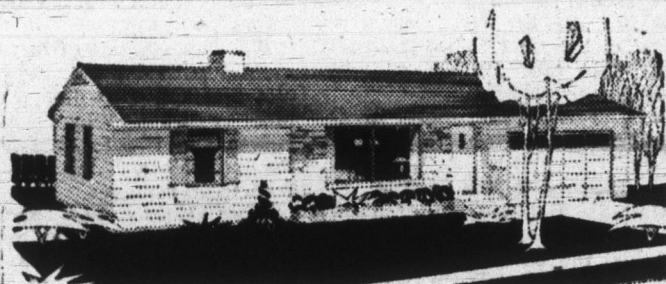


Here is a model of the house which will be shown to the Russians in Moscow at the American National Exhibition this summer. This model in Commack, N. Y., would sell for \$14,490 on a quarter-acre landscaped lot. It has an all-electric kitchen, is completely insulated with mineral wool, and has a roof of white asphalt shingles.

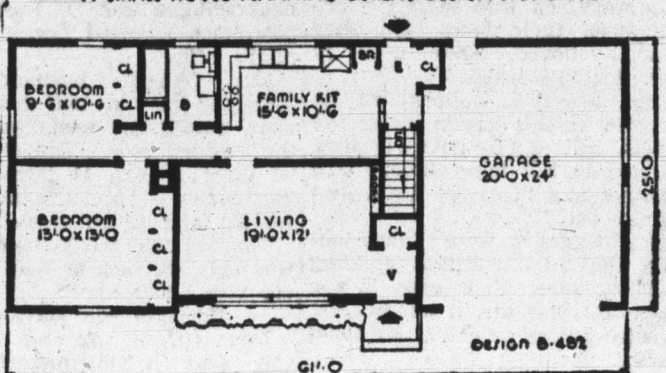
The white roof on the Moscow model also adds to summer comfort by reflecting heat from the sun.

Inside, the Russians will see such typical American family possessions that add to over-all comfort and graceful living as an all-electric kitchen with deluxe kitchen cabinets, built-in oven and counter top range.

One thing the curious Russians won't be able to see because it is hidden in the walls and ceiling is thick mineral wool insulation. Most Americans consider this a necessity rather than a luxury, since mineral wool helps keep winter fuel bills down and keeps houses more comfortable in summer. It would, in fact, make even the cold Siberian winters easier to take.



A SMALL HOUSE PLANNING BUREAU DESIGN NO. B-482



DESIGN B-482. Plans call for wide overhanging eaves and a living room window framed with stone or brick veneer and planter to lend form to the exterior which enables the attached double garage to be in proportion with the overall design. Wide horizontal siding and low pitched asphalt shingle roof comprise the remainder of the exterior.

Extra generous closets have been provided in the bedrooms. The master bedroom has low, built-in trays. A separate vestibule with coat closet leads to the living room which features built-in book shelves by the stair wall. Floor area is 996 square feet, cubeage is 18,426 cubic feet.

For further information about DESIGN B-482, write the Small House Planning Bureau, St. Cloud, Minn. In Canada, the Small House Planning Bureau of Canada, St. John, New Brunswick.

Washing Windows Needn't Be Threat To Life and Limb

In White Plains, N.Y., a mother of three children narrowly missed plunging seven stories to her death after she lost her balance while washing the outside of her apartment windows.



WRONG—Housewife tempts fate by perching dangerously and uncomfortably on sill to wash windows on the outside.

who heard her screams broke down the locked door of her apartment and pulled her to safety.

Risks of this type are no longer necessary today, thanks to the development of window sash that lift out or fold for washing inside the room or that



RIGHT—Folding sash of modern window of ponderosa pine lets this housewife clean her windows safely and comfortably.

can be turned so that the exterior glass is easily reached from inside.

Lift-out and fold-down windows of ponderosa pine include sliding and double-hung models in modern or traditional styles. Models which can be opened so that exterior glass can be reached for cleaning include hopper, awning, and casement styles in ponderosa pine.

HEAT STRAINS HEART

When the temperature stays above 83 degrees and relative humidity above 75 percent, the human heart must work overtime to pump blood to the surface of the skin. That is why hot, humid weather puts a strain on the heart.



CEILING TILE As Low As **11c** SQ. FT. Cash & Carry

Give that old room a "new look" with new walls and ceiling tile. Easily and speedily applied . . . at low cost; too. The wall paneling and ceiling tile are pre-finished and eliminates painting. Do it yourself or let us recommend an experienced carpenter!

OPEN FRIDAY NIGHT till 9:30
For Your Shopping and Consultation
CLOSE SATURDAY at 12:00 NOON

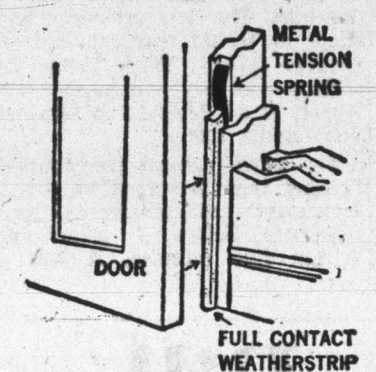
ARNOLD LUMBER CO., INC.

"Your Complete Builders Supply Department Store"
Winchester Street at Erie R.R. Crossing

Weatherstripping In Door Frame Really Does Job

An important new development in home building today is a new door frame with built-in weatherstripping.

The new door frame, made of ponderosa pine, has weatherstripping of fabric-covered wood along both sides and the top. The strip is backed by a hidden metal tension spring that keeps it in constant weather-tight contact with the door, sealing out cold drafts in winter, heat in summer, and dust all year around.



Metal tension spring built into ponderosa pine door frame keeps weatherstripping pressed against door, assuring efficient weather seal.

tact with the door, sealing out cold drafts in winter, heat in summer, and dust all year around.

The new weatherstripping presses against the interior face of the door at its edges, permitting the door to fit more closely into its frame and avoiding wide, unsightly cracks.

This new frame is available in units consisting of frame and weatherstripping alone or as a complete entrance with jamb, sill, weatherstripping on all four sides, and door ready-hung with hardware. It can be installed in less than 15 minutes.

Choice of Roof Can Reduce Cost of Home

Costs of building a house can be reduced considerably by careful selection of the roof style and construction, reports the Small Homes Council of the University of Illinois.

The Council, which carries on continuous research to find better and less costly methods of home building, says that recent studies show the most economical roof has a 2-in-12 pitch—that is, a slope of two inches for every foot of width—on a house either 28 or 40 feet wide. A roof with a 4-in-12 pitch is a close second for economy.

Flat roofs, or roofs with a 1-in-12 pitch, are more expensive, the Council's research shows.

Costs Compared

In their analysis, the university researchers showed that, based on average prices for labor and materials, it would cost \$88 per 100 square foot of floor area for a flat roof on a house with a 28-foot span, and \$90 per 100 square feet with a 1-in-12 pitch. A roof with a 2-in-12 or 4-in-12 pitch on the same house with overhangs of approximately two feet, could be built for \$78 per 100 feet of floor area. On a 40-foot span, a 4-in-12 pitch is slightly higher in cost—\$86 per 100 square feet compared to \$84 for the 2-in-12 pitch.

This means that a house with 1500 square feet of floor area and a 28-foot span can be erected for \$150 less with a 2-in-12 or 4-in-12 pitched roof than with a flat roof, and \$180 less than a roof with a 1-in-12 pitch.

The Council explains that the primary reasons for the difference in cost between pitched roofs and flat, or almost flat, roofs are:

Trusses Save

1. Nail-glued trusses available today are more economical at many spans and pitches than the nailed and ring-connected trusses previously used.

2. The acceptability today of asphalt shingles for lower roof slopes. "Asphalt shingles," the Council points out, "can be laid at slopes as low as 2-in-12 if a double layer of 15-pound saturated felt underlayment is used and if shingle tabs are held down firmly by asphalt cement. Some asphalt shingles are provided with cement already on the tabs. Such shingles can be laid with virtually no increase in labor time."

3. Although the primary framing for flat roofs is still cheaper than the economical nail-glued truss, the increase in sheathing and roofing costs is more than enough to override the savings in primary framing. On flat roofs, 3/4-inch plywood must be used while 3/8-inch plywood is adequate for shingle roofs.

4. Cost of labor to apply built-up roofing material on flat or nearly-flat roofs is higher than the cost of applying shingles on a pitched roof.

No Muss At All - Just Give Us A Call

YOST READY MIX CONCRETE

10% Discount

ON ALL READY MIX CONCRETE

CALL 3-3114

GET OUR PRICES—PROVE FOR YOURSELF YOU GET THE BEST FOR LESS!

Yost Gravel Readymix, Inc.

Phone 3-3114

Decatur

R. R. 1

Are You A VETERAN?

DO YOU WANT A

NEW HOME?

If you are a Veteran . . . a New, Three Bedroom Home will require Little or NO DOWN PAYMENT . . . Monthly Payments Like Rent.

Located near schools and playgrounds . . . We have several loans left. So Act Now!

CALL 3-3512

CLARK SMITH

Attention!
At the turn of a Faucet
All the **SOFT WATER**
YOU WANT!
— WITH —
CULLIGAN
Fully Automatic or Service.
F. H. A. Approved Title I.

PHONE 3-3214

CULLIGAN
WATER CONDITIONING
SERVICE

- Soft Water Service
- Cal Soap
- Filters
- Chlorinators
- Home Owned Softeners
- Commercial, Industrial Water Conditioning.

READY-MIXED CONCRETE

When YOU WANT IT Where YOU WANT IT

FREE ESTIMATES

When the terms are in and you're ready for concrete for that WALK, DRIVEWAY, TERRACE, STEPS, FOUNDATION—OR WHAT HAVE YOU—call us! We'll deliver promptly the type and amount of concrete you need. For the best in Ready-Mixed Concrete—CONTACT US TODAY!

"PROVEN ABILITY"

DECATUR READY-MIX, INC.
OAK ST. at FORNAX ST. DECATUR

PHONE 3-2561

Carrier

THE FIRST NAME IN AIR CONDITIONING

ROOM AIR CONDITIONERS
1/2 to 2 H.P.

CENTRAL AIR CONDITIONERS
THROUGH YOUR FORCED AIR FURNACE

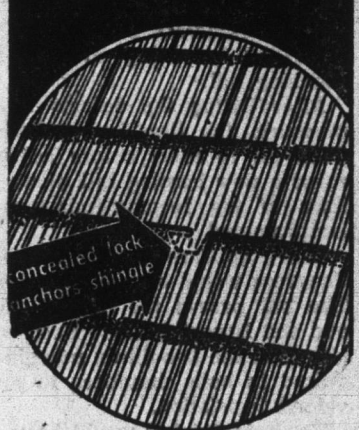
2 to 5 H.P. HEAT PUMPS

THE UNIT THAT REQUIRES NO FUEL

(Ask About Our New Air Conditioner Built Especially For House Trailers Up To 41 Ft.—All Inside Installation).

CURTIS F. HILL
AIR CONDITIONING & REFRIGERATION
105 So. 13th St. DECATUR

Square-Tab Beauty!
Wind-Safe Design!
ONE roof shingle has them BOTH!



RUBEROID LOK-TABS

Here's a revolutionary new roof shingle—a combination of self-locking wind safety and popular square-tab design! Ingenious, built-in, wind-lock anchors each Lok-Tab at center of built Rich shake-texture, asphalt economy and fire-safety . . . many decorator colors to choose from. The cost? Surprisingly low! Come in! See Lok-Tabs for yourself!

"WE APPLY"

FREE ESTIMATES
CHEERFULLY GIVEN!

ASHBAUCHERS' TIN SHOP

Established 1915
HEATING - ROOFING
SPOUTING - SIDING
AIR CONDITIONING

116 N. 1st St. Phone 3-2615

"PAINT AND SAVE" JAMBOREE

\$1.12 OFF ON A GALLON
Surfa-Tone
THE AMAZING NEW
VINYL LATEX WALL FINISH

Wonderful new vinyl paint cuts painting time. Dries in 30 minutes. Cleans up with soap and water. Flows on with brush or roller. Beautiful decorator colors.

Now Only \$3.77 A GALLON
REG. \$4.89

SAVE 61c A GALLON ON **Super-TEX**

MILDEW-RESISTANT • SELF-CLEANING

HOUSE PAINT

White stays white. Has extra titanium, the whitest pigment known and pure tinned oil. Self-leveling.

Now Only \$4.37 A GALLON
REG. \$4.98

SAVE 22c A QUART ON **Super-TEX**

ODORLESS • QUICK DRY

ENAMEL

Durable, Washable. Contains 100% Alkyd & Silicone • Lovely colors.

Now Only \$1.57 A QUART
REG. \$1.79

G.C. Murphy Co.

THE COMPLETE VARIETY STORE IN DECATUR