

## Mirrors Can Create New Vistas Of Beauty Throughout A Home

In every room of the house, and for every person in the household mirrors have a job to do.

That's the opinion of June Cabot, Home Arts Council director for Libby-Owens-Ford, who says, "The average home contains dozens of places where the need exists, but where nothing has been done to fill it."

Here is a check-list—by no means exhaustive—which Miss Cabot has compiled of the most important mirror locations in each room, and some suggestions regarding mirror type and design.

**Living Room:** Over fireplace—If the room is modern, a simple mirror "corner framed" on a mat of woven cane or an unframed panel of architectural mirror. If traditional, a gilt-framed mirror of Early American or Victorian design.

**Above sofa:** Modern, a rectangular frame of wrought iron or polished brass or a frame covered in fabric matching draperies. Traditional, a frame of black magnolia wood with gold outline or a simple unadorned gilt. In some cases two small mirrors over low tables at the sofa ends are also effective.

**As table tops:** Sheets of plate glass mirror cut to cover coffee and end tables give a bright, impervious finish.

**Dining Room:** Above sideboard

—A rectangular shadow-box mirror is equally suitable to modern or traditional decor. The same dualism is possible with a frame of ceramic tiles.

**Sideboard surface:** A cut-ta-measure top will add to the decorative effect of candelabra and service, as will a mirror plateau on the dining table.

**Bedrooms:** Above dressing table —A single-unit table with mirror attached or a dressing table with a framed mirror above it. Either a narrow shadow box or a larger, black enamel frame will fit any room decoration.

**Above man's chest-of-drawers:** A three-way mirror in masculine design, especially if an electric shaver is used.

**On door:** A full-length dressing mirror can be attached at home with the aid of simple plastic clips provided by most mirror dealers.

**Bathroom:** Above wash basin—A three-way mirror is helpful in grooming. All bathroom mirrors should be backed with copper paint or plating as protection against moisture.

**Entrance Hall:** A single mirror for decoration and as an aid in donning coats and hats. Texture frames are appropriate, among them translucent plastic coverings sprigs of heather.

Standard rectangular tubs come in lengths of 4½, 5 and 5½ feet and heights of 14 and 16 inches. If you have only four feet along one wall, you want to consider the 4 foot x 4 foot square "Neo-Angle" bathtub. The roomy diagonal bathing area offers convenience and safety in its corner seats, low sides and flat bottom.

If only a very limited area is available for a tub, the small "square" bathtub is ideal as it measures as little as 38 x 39, yet there is enough space to combine adult showering and bathing facilities. In fact, since this tub takes little more space than a shower stall alone, it is suitable for converting a roomy old-fashioned closet into a semi-bathroom.

If your bathroom measures at least 9 x 12 feet, you may increase its usefulness by adding an extra lavatory. The installation of twin lavatories can go a long way toward solving traffic jams in this all-important room.

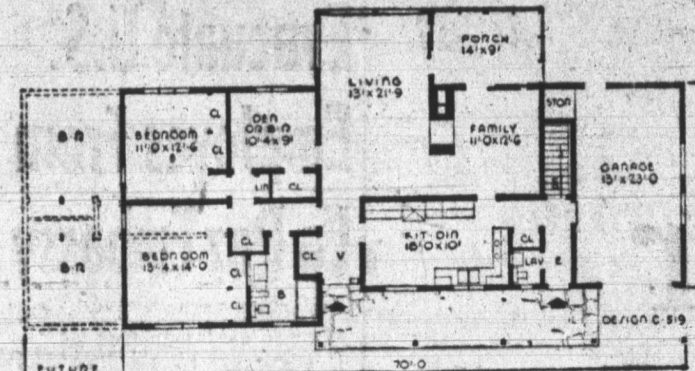
**Dual-Purpose Lavatories**  
The lavatory with combined dressing table and bowl, has become increasingly popular as it couples the usefulness of the washing area with the beauty and storage capacity of a vanity.

New lavatories feature anti-soap dishes and towel bars in splash rims, shelf back, cast-in graceful designs. A particularly attractive lavatory has off-center styling which provides greater work area and space for grooming articles—shaving supplies or cosmetics. Its 24 x 20 inch dimensions give maximum convenience in a small area.

In selecting new toilets, sanitation, comfort and quiet operation must be considered. Recently introduced is a toilet that hangs off the floor.

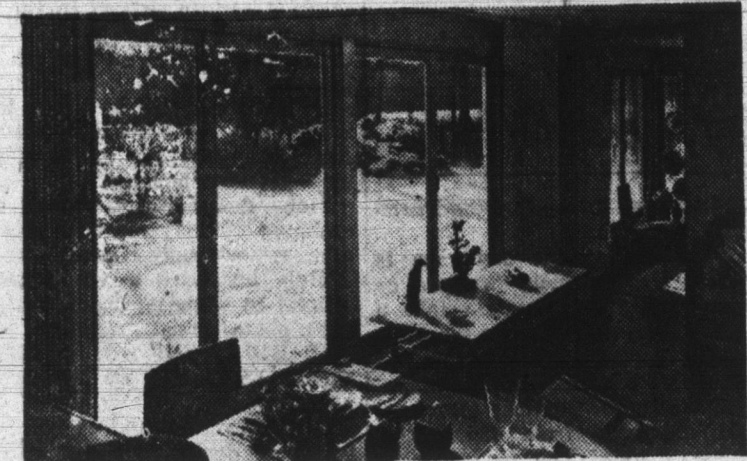


A SMALL HOUSE PLANNING BUREAU DESIGN NO. C-519



### Window Magic:

## Wall Becomes Living Mural



"Picture wall" lets winter scene in, keeps cold out.

Home buyers of today are more fortunate than their parents and grandparents were. As the wide sweep of windows above shows, architects of today are devoting more thought to unifying house and grounds, and taking full advantage of new developments in building materials.

Home designers are better able to do this today because of the ready availability at reasonable cost of components such as these sliding windows of ponderosa pine.

Because these are stock units, factory-made and distributed all over the country, the architects were able to provide the owners with the benefits of walls of glass without the prohibitive costs of on-the-job construction. These big wood windows add immeasurably to the comfort, convenience, and beauty of the house, inside and out. They provide not only more natural light and ventilation, but give the interior of the house a living picture wall of nature's ever changing scene.

## Home Expansion Plans Usually Provide for Extra Heating

About 99 percent of all home expansion plans call for extra heating facilities, according to a study by the Better Heating-Cooling Council. In this connection, the first thing a home-owner should find out is whether his existing heating plant is powerful enough to take on an extra heating load. Then he should determine how much work and alteration will be involved in heating the new area.

Most hot water or steam heating systems, the Council reports, are designed with an extra capacity of up to 30 per cent, and thus can usually handle heating requirements for a new room.

In hot water heating expansion work, small piping or tubing frequently can be used. This extensive alteration can be avoided, and the piping can be concealed by "snaking" it between stud spaces in the walls and joist spaces in the floor.

Gas heaters, too, are being used increasingly to meet the needs of add-on and conversion projects. Development has been particularly swift for the type vented directly through a wall, without pipes and chimneys.

These models now cover the size range from 8,000 to 50,000 B.T.U. input and vary from trim white bathroom models to sedate buff

and copper-tone appliances designed to blend smoothly with paneling and draperies in well-groomed living areas.

For all sizes and shapes, the feature stressed is the sealed combustion chamber, which gas is burned without using room air. Air for combustion is drawn from outdoors, and the built-in vent also discharges products of combustion outside.

Some models are available with manual controls, but much emphasis is placed on thermostatically controlled equipment able to maintain even temperatures without attention.

**KEEP DAMPER CLOSED**  
The damper should be kept closed in a fireplace when it's not being used. When the damper is open, heat shoots up the chimney and is wasted.

**LOGS KEPT DRY**  
A strip of asphalt roll roofing keeps rain and snow off fireplace logs stored in the open.

Dozens of wild ponies are driven from a nearby island and sold at an annual auction each summer at Chicoteague, Va.

**DESIGN C-519.** With a minimum alteration this three bedroom house can have five bedrooms, as indicated by the dotted lines on the drawing. The living room and adjoining family room can be opened to the porch by means of sliding glass doors. A two-way fireplace forms the divider between them. There is a handy clean-up room, large coat closet, direct entry to the garage, a full basement and modern kitchen ideally located to be the hub of the house.

The flat roofed exterior features clean, unbroken lines. Floor area is 1577 square feet (not including garage or porch), cubage 26,935 cubic feet.

For further information about DESIGN C-519, write the Small House Planning Bureau, St. Cloud, Minn. In Canada, the Small House Planning Bureau of Canada, St. John, New Brunswick.

## Natural Wood Tones Favored In The Kitchen

A majority of homes owners prefer their wood kitchen cabinets prefinished in natural tones, a comprehensive industry survey indicates.

A representative group of small, medium and large wood cabinet manufacturers reported in a recent survey conducted by the National Institute of Wood Kitchen Cabinets that 69 per cent of their sales in 1958 were in natural finished units.

Eighty-three per cent of the companies produced cabinets in natural finishes, offering an average of six different clear stains and lacquers. A low gloss was used by 55 per cent of these firms. A choice of high and low glosses was offered by 22.5 per cent of the companies, while a similar number imparted only a medium gloss to their units.

Enamel finished cabinets, produced by 55 per cent of the firms, accounted for slightly more than 8 per cent of sales. They were available, on the average, in a selection of six colors.

Cabinets with unfinished surfaces are made by 69 per cent of the firms. Sales of such cabinets amounted to 22.5 per cent of the companies' totals.

Buyers had a wide variety of wood species from which to choose. The selection included birch, mahogany, knotty pine, ash, maple, oak, walnut, korina, pine and cherry. Also offered were cabinets in prima vera, gum, butternut, hackberry and cedar.

Diversified styling also characterized the lines of most companies. Seventy per cent offered more than one design of cabinets.

### Storms Can't Ruffle Wind-Tight Roofing

Among the most important recent advancements in the home-building field are wind-resistant applications of asphalt shingles.

In one of these methods the roofer cements individual shingles down to the roof with special cement. Another method is the use of special shingles that lock securely together. A third method employs asphalt shingles that have cement pre-applied at the factory. All of these applications are engineered to resist winds of even hurricane velocity.

### Saw Blade Protector

Prevent stored circular saw blades from dulling or nicking by stretching a wide rubber band around their edges. The rubber band can be made by simply cutting a strip from an old inner tube.

### Taping Joints

To make the job come out smooth, when taping joints in dry-wall construction, put on the finish coats of cement with a plasterer's finishing trowel, rather than with a putty knife. The trowel's wider area will permit better "feathering" of the joints.

## REPLACE YOUR PORCH FLOOR WITH YOST READY-MIX CONCRETE

For beauty, long service and safety, replace your porch floor with concrete. We will deliver Ready Mixed Concrete in just the right quantities, in just the right mixture, at just the time you want it. Porches made with Yost Ready Mixed Concrete will brighten up your home and give you hours of delightful outdoor living for years to come. Call us today for a FREE ESTIMATE.

## 10% Discount ON READY MIX CONCRETE

CALL 3-3114  
GET OUR PRICES—PROVE FOR YOURSELF YOU GET THE BEST FOR LESS!

Yost Gravel Readymix, Inc.  
Phone 3-3114 Decatur R. R. 1

## Good Windows Offer Lifetime Of Benefits to Home Owners

Man's first window probably was a hole cut in the wall of a cave to let more light in. Later it may have dawned on his Neanderthal intelligence that the fresh air was nice, too. Today windows do much more than admit light and air.



### Ventilation

and it's important for prospective home owners and families planning to remodel to know what these functions are. Proper windows can offer them a lifetime of benefits.

Here are some of the principal functions of quality windows of ponderosa pine:

### 1. Scientific ventilation.

Double-hung windows open top and bottom. Hot stale air goes out at the top, and fresh air comes in at the bottom. Casement, awning, and hopper styles

### Weather Protection

Double-hung windows open top and bottom. Hot stale air goes out at the top, and fresh air comes in at the bottom. Casement, awning, and hopper styles

### Exterior Beauty

ly conduct heat outside. As a result, wood windows save heat in winter, and there's no condensation on frames and sash to run down over painted walls and wallpaper.

### 4. Architectural beauty.

Inside and out, windows probably contribute more to styling and appearance of a house than any other component. Wood windows are available in styles to complement architecture from Colonial to contemporary.

A further advantage is that wood windows can be stained or painted to harmonize with color schemes inside and out.

### 5. Easy cleaning.

Many models of double-hung and sliding wood windows are easily removed from their frames inside the house, simplifying cleaning and making the job safe. Awning, hopper, and casement models open so that both sides of the glass can be washed from inside the house.

### 6. View.

Windows are the "eyes" of any house. This is especially important for a house on a scenic site or one with an attractive garden. The more windows there are, the greater the family's enjoyment of nature in all seasons.

### Exterior Beauty

ly conduct heat outside. As a result, wood windows save heat in winter, and there's no condensation on frames and sash to run down over painted walls and wallpaper.

### 4. Architectural beauty.

Inside and out, windows probably contribute more to styling and appearance of a house than any other component. Wood windows are available in styles to complement architecture from Colonial to contemporary.

### 5. Easy cleaning.

Many models of double-hung and sliding wood windows are easily removed from their frames inside the house, simplifying cleaning and making the job safe. Awning, hopper, and casement models open so that both sides of the glass can be washed from inside the house.

### 6. View.

Windows are the "eyes" of any house. This is especially important for a house on a scenic site or one with an attractive garden. The more windows there are, the greater the family's enjoyment of nature in all seasons.

### Exterior Beauty

ly conduct heat outside. As a result, wood windows save heat in winter, and there's no condensation on frames and sash to run down over painted walls and wallpaper.

### 4. Architectural beauty.

Inside and out, windows probably contribute more to styling and appearance of a house than any other component. Wood windows are available in styles to complement architecture from Colonial to contemporary.

### 5. Easy cleaning.

Many models of double-hung and sliding wood windows are easily removed from their frames inside the house, simplifying cleaning and making the job safe. Awning, hopper, and casement models open so that both sides of the glass can be washed from inside the house.

### 6. View.

Windows are the "eyes" of any house. This is especially important for a house on a scenic site or one with an attractive garden. The more windows there are, the greater the family's enjoyment of nature in all seasons.

### Exterior Beauty

ly conduct heat outside. As a result, wood windows save heat in winter, and there's no condensation on frames and sash to run down over painted walls and wallpaper.

### 4. Architectural beauty.

Inside and out, windows probably contribute more to styling and appearance of a house than any other component. Wood windows are available in styles to complement architecture from Colonial to contemporary.

### 5. Easy cleaning.

Many models of double-hung and sliding wood windows are easily removed from their frames inside the house, simplifying cleaning and making the job safe. Awning, hopper, and casement models open so that both sides of the glass can be washed from inside the house.

### 6. View.

Windows are the "eyes" of any house. This is especially important for a house on a scenic site or one with an attractive garden. The more windows there are, the greater the family's enjoyment of nature in all seasons.

## New Beauty Brought To Bathrooms

Just what can you do to have an attractive, remodeled bathroom? There are many important factors to be considered. First, plan very carefully before remodeling your bathroom since this room remains completely furnished with the same fixtures in the same arrangement for many years to come. Therefore, you should select clean, simple room designs that will give privacy and convenience and you should use well-designed quality fixtures that will maintain their appeal and durability.

Cost can be kept down by placing the bathtub, lavatory and toilet against a common wall. This way, all three fixtures are close to waste and supply pipes, which means less costly piping is needed. Since a new bathtub is installed for a long time, it is wise to select a tub made of long-wearing materials. Tubs constructed of cast-iron with a thick coating of enamel in white or color are recommended for easy cleaning and smooth appearance that will not change in continuous use. Acid-resisting finishes protect against stains and discolorations.

**Standard Tub Size**  
**NEW NORGE**  
WRINGER WASHER  
Floor Model Reg. \$179.95  
NOW \$129.95  
**GOODYEAR**  
222 N. 3rd Street



## REMODELING an Old Home... or PLANNING a New Home?

... You'll want the latest in kitchen ideas. Stop in and ask about our Complete Planning Service and Free Estimates. Or if you are a "Do-It-Yourselfer"... remember, we have all of the materials you will need.

**BUSINESS AS USUAL... WHILE WE ARE REMODELING OUR DISPLAY ROOM FOR YOU.**

**ARNOLD LUMBER CO., INC.**  
"Your Complete Builders Supply Department Store"

Winchester Street at Erie R.R. Crossing  
OPEN SATURDAY till 5:00 P.M.

## Just Ask For It!

COMPLETE LINE OF HEATING AND WINTER AIR-CONDITIONING EQUIPMENT by Majestic

THERE IS A MAJESTIC WARM AIR FURNACE TO MEET YOUR HEATING REQUIREMENTS Gravity or Forced Air

Majestic Units Are Designed To Give—

- Summer Comfort All Winter
- Filtered-Humidified Air
- Longer Life

Call Us Today!

PHONE 3-2615

Easy PAYMENT PLAN AVAILABLE

ASHBAUCHERS' TIN SHOP

Established 1915  
HEATING—ROOFING—SIDING—SPOUTING  
116 N. 1st St. Phone 3-2615

## READY-MIXED CONCRETE



When the forms are in and you're ready for concrete for that WALK, DRIVEWAY, TERRACE, STEPS, FOUNDATION—OR WHAT HAVE YOU—call us! We'll deliver promptly the type and amount of concrete you need. For the best in Ready-Mixed Concrete—CONTACT US TODAY!

## "PROVEN ABILITY"

**DECATUR READY-MIX, INC.**  
OAK ST. at FORNAX ST. DECATUR

## SPRING... PAINT SALE

**BUY ONE GALLON GET ONE FREE! QUART**  
(All Colors except White)

## GAY, NEW WALL COLORS SATONE ALKYD FLAT ENAMEL



THE ULTIMATE IN FINE WALL FINISHES

## TRY KLENKS FIRST