

**NOW'S THE
TIME TO**

BUILD! REMODEL! PAINT! LANDSCAPE!

Tiling Bathroom or Kitchen Can Be a Simple Job for Homeowner

Simple tools, a supply of ceramic tile and surprisingly little time and money are all you need to turn home maintenance problems into good looking, carefree facilities.

Whether you want to remodel the kitchen, bathrooms, fireplace or patio, the first step is to check whether the surface to receive the ceramic tile is sound, plumb and free of any material that might interfere with the bond of the adhesive that holds the tile to the wall or whatever.

If the surface passes this test, the next step is to prime any areas that will be exposed to steam or water. Seal all openings around fixtures for example, with waterproof tape. When you are ready to start tiling, begin around the tub if it's a bathroom. If the tub is not level make your cuts in the first row of tiles to establish a straight line.

Use a saw tooth trowel to apply the waterproof adhesive on the wall. Avoid spreading on too much adhesive or the excess will ooze up between the tiles when they are pressed into place. Apply adhesive to about 10 square feet at a time and then press the tiles into place. Glazed tile made in this country has small raised bars on the edges to insure straight lines.

To cut glazed tile simply mark the glazed surface lightly with a pencil parallel to ridges on unglazed side. Using a glass cutter, the tile along this line. Then place the unglazed side of the tile over a large nail with the pencil line parallel with the nail. Apply pressure and the tile will break evenly. Use pliers to break off bits of the tile when fitting around fixtures. Fixture flanges and cement will conceal rough edges.

After installation allow the

tile to set overnight so volatile elements in the adhesive will escape. Then soak the tile joints with plenty of water.

After soaking, grouting is the next step. Mix enough water with a commercial tile grout to form a paste with the consistency of heavy cream. Work this grout into the tile joints with a sponge or rubber gloves. The excess grout that will partly cover the tile sponges off readily. Polish the finished job with a dry cloth.

Most grouts should be wetted several times a day during the four days following installation so they will cure properly.

Home Can Usually Be Expanded

The "outgrown" home is a common complaint among many young families these days.

A typical situation is the couple who purchased a house shortly after World War II. At that time, the family income was low, the future uncertain, and the two-bedroom dwelling at \$10,000 seemed like a big undertaking.

Now — say 10 years later — there are two or three children. The family income has come along nicely. The home of 10 years ago seems very cramped. That's the story behind many families that are spending their week-ends these days looking for a new home.

But is moving the ideal solution? In the 10 years, the family has become a part of the community it has helped to develop. Their friends are around them. The children are well launched in the neighborhood school.

Investigate Possibilities
Actually, for many families, the wise move would be to improve the existing home to provide the needed space. At least, it's a good idea to investigate all the possibilities thoroughly before deciding whether to move. Consider the market for new homes and what you may expect to realize for a home like yours.

Discuss the financing arrangements with the bank and check with an architect and contractor to see what it would cost to make the desired improvements in your present home.

This family had always wanted a room with a fireplace, flagstone floors, and knotty western pine walls in a natural finish as a center for family fun and informal entertaining of friends.

Pine Paneling
The job can be turned over to contractors or can be a partial do-it-yourself project. Pine paneling the interior is a job that is particularly well suited to the home craftsman. But whatever the method, the first thing to do in adding a room to the home is to study the floor plan and placement of the house on the property. It's advisable to make a scale drawing on graph paper to consider the room from all angles.

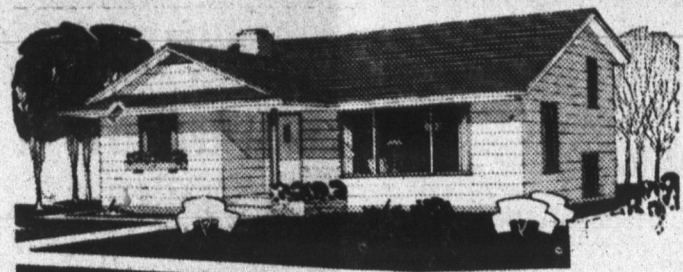
When a rough plan is figured out, then go to builder for expert advice, including information about local zoning laws and the relation of the proposed addition to the rest of the house.

In this case, the extra room was added to the home adjacent to the garage. The utility room behind the garage became the connecting hallway between the new room and the main part of the house.

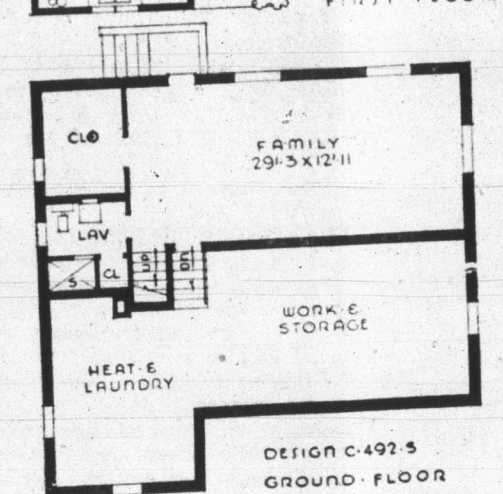
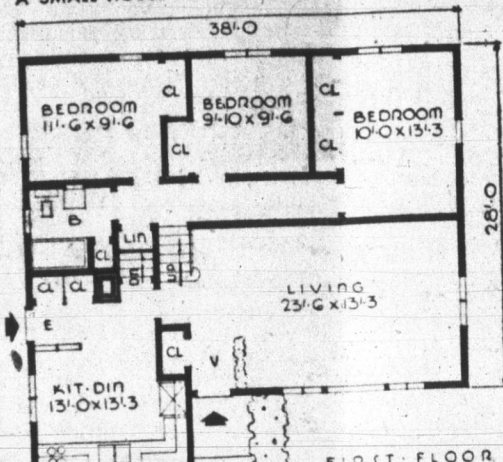
The new room, like the rest of the house, was built on a slab of concrete set over heating coils for radiant heating.

Extra touches that added a note of luxury and utility were bay windows, built-ins of western pine to match the paneling and a Dutch door leading to the main part of the house.

CHROME PROTECTION
To protect chrome plumbing fixtures from scratches when using a pipe wrench or pliers on them, wrap the fixtures with friction tape. The result is a non-slip surface for your wrench. The chrome is safe from marring and the tape removes easily after the job is done.



A SMALL HOUSE PLANNING BUREAU DESIGN NO. C-492-S



DESIGN C-492-S. This front-to-back split level concentrates a lot of living space in an overall width of only 38 feet. The floor plan allows the use of a level piece of ground and provides access to the rear yard by means of an outside stair well. The family room has access to the rear yard and is directly below the bedrooms. Up six steps you are on the kitchen-dinette and living room level. Seven steps up from the living room three generous bedrooms with wardrobe type closets and a full bath are located. The family room has a lavatory with a good sized shower. Wide horizontal siding has been used on the entire exterior. Floor area is 1148 square feet, cubage is 18,502 cubic feet. For further information about Design C-492-S, write the Small House Planning Bureau, St. Cloud, Minn. In Canada, the Small House Planning Bureau of Canada, St. John, New Brunswick.

Minor Damage Done As Autos Collide

A car driven by Paul Schueler, 33, of route 2, collided with the rear of an auto driven by James H. Borne, 17, of Craigville route one, at 10:30 p.m. Saturday just north of Bluffton on route 1. Sheriff Raymond Durr estimated damage to the Schueler car at \$200, and the Borne auto at \$100.

Two Buses Stop In Decatur Briefly

Two Greyhound buses, carrying the "Holiday on Ice" troupe from New York to Fort Wayne, stopped in Decatur briefly about 1:15 this afternoon. The confusion in time and the necessity of a rest stop led the troupe to Decatur. One of the buses stopped at the court house square, and the other located the bus station, and stopped there.

"PANELESS" WITH PAPER TOWELS...

30-Second Window Wash



Easy way to ease the home window washing chore is to use paper towels instead of cleaning rags to wipe off and polish the windows. They are especially useful in cleaning the difficult-to-reach corners and edges of windows. Use Wash towels for each window; they're inexpensive and quickly disposable. Paper towels which are soft and highly absorbent are best. They are most efficient with the new spray-on cleaners, but also can be used to catch damp spots, and as polishers, when windows are washed with water and squeegee.

Landscaping Hikes Value Of The Home

Landscaping and planting the home property is one of the first considerations in a home improvement program. Fifty million home gardeners this season will be planting trees and shrubs to make their home properties more livable, more beautiful and more valuable, says the American Association of Nurserymen, with the jobs ranging in size from a few shrubs to complete landscaping programs.

An advantage of home improvement through landscaping is that the homeowner, if he ever wants to sell the property, will get a higher resale price. Well landscaped homes bring 15 to 20 per cent more in the real estate markets. In setting out to improve your property with landscaping, start with a well-conceived plan.

Study Location

First, study the location of your house and the slope of the ground. Look at the property as a whole, not just the house, or drive, or yard.

Your planting for best effect must have unity, that is it must tie house, drive, walks and land together to make a pleasing picture.

Eventually you will want a planting around the foundation of the home to tie it to the ground in a natural way. Bare, stark walls are unsightly. In the foundation planting you will want low-growing shrubs and plants that will not grow above the first floor windows.

A tree at the most open corner of the home will be desirable for accent. In front of the foundation planting open lawn space is popular in order to present an unobstructed sweep of grass.

Frame the View

If you have a lovely open view from any location on the property do not plant anything but low-growing plants to set off the view. Tall shrubs and trees should only be planted to frame the view, not to block it.

Conversely, if you have an unsightly view, or need privacy where houses are close together, a screen planting of tall shrubs or trees should be made.

Sometimes one wishes a low line of demarcation between his property and the next. A living fence of roses or low shrubs may serve in that case to be admired by your neighbor as well as your own family.

Avoid Injuries On Basement Stairs

Inexpensive improvements can transform a basement stairway into a safe, attractive area with storage facilities. Children can easily suffer serious injury when playing on an open stairway, but a panel of Masonite "Peg-Board" can block off this open area and provide an attractive backing for hanging pictures, plants, toys, clothes or small tools.

The perforated hardboard panel can be cut to the desired size and shape primed and painted, before it is suspended by a plastic clothesline woven through the holes and strategically located screw-eyes. Another piece of hardboard can be used to enclose the area underneath the stairway to further perk up the basement's appearance.

GLUE APPLICATOR

A novel but effective tool for spreading glue over large flat surfaces is a short piece of broken hacksaw blade. Used cutting edge down, the teeth act like a notched trowel and spread the glue out in an even layer.

RE-SLOTING SCREWS

If a screw slot is so stripped by the time the screw is part way out that a screwdriver can't turn it, at right angles to the damaged slot cut a new one with a hacksaw. Then use a narrow bladed screwdriver to back the screw out the rest of the way.

TREE PROTECTION

If tree limbs are split in a windstorm, do not grab hold of them and pull them from the tree. If you do, you may pull off a long

strip of bark from the main trunk and thus permanently disfigure the tree. Cut limbs off evenly with a saw. If dangerously high from the ground let a tree expert do the work. He will doctor the tree.

AVOID SLIPPING

How to keep screwdriver blades from slipping when heavy pressure is applied? One simple way is to rub ordinary blackboard chalk on the tip of the blade beforehand.

10% Discount
ON ALL
READY MIX CONCRETE



**NOW'S THE
TIME TO
BUILD
OR REMODEL!**

YOST READY-MIX CONCRETE

For dozens of improvements around your home, no other material offers the service, the economy, the fire-safety of Yost Ready-Mix Concrete.

CALL 3-3114

GET OUR PRICES—PROVE FOR YOURSELF
YOU GET THE BEST FOR LESS!

Yost Gravel Readymix, Inc.

Phone 3-3114

Decatur

R. R. 1

BUILDING CAN BE FUN!



Let us help you plan your new home or remodel your present one. Our experience can help you get as livable a family room as this one recently added to a local home. (Owner's name on request).

In Decatur we are proud to be the only direct factory authorized dealer for the JOHNS-MANVILLE Corp. and offer—

1. JM Seal-O-Matic asphalt shingles
2. JM Asbestos roofing and siding
3. JM Flexboard
4. JM Sheathing in 1/2" and 25/32"
5. JM Ivory Decorative Board 4x8
6. JM Ceiling Tile
7. JM Wall Planking
8. JM Rock Wool Insulation
9. JM Vinyl Floor Tile
10. JM Roll Roofing and Coatings

Decatur Lumber Co.

111 W. Jefferson St.

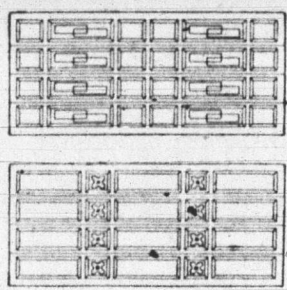
Phone 3-3309

*the Finest in Overhead
Garage Doors...*



**RAYNOR CARVED PANEL
... DESIGNS**

Your home deserves the finest in overhead garage doors... both in quality and appearance. Only Raynor designs and builds the "custom-look" into garage doors and at no additional cost to you. Raynor's exclusive "floating panel" construction assures you a garage door that will keep its smart, modern look for years to come.



RAYNOR—Builders of a Complete Line of Wood Sectional Overhead Doors

Arnold Lumber Co.

INC.

"YOUR COMPLETE BUILDERS' SUPPLY
DEPARTMENT STORE"

Winchester Street at Erie R. R. Crossing
Phone 3-3108

THAT GAS HEAT PERMIT IS A PASS TO SOLID COMFORT
PLAY IT SAFE!...DEPEND ON

Janitrol
THE ADVANCED, AUTOMATIC
GAS HEATING EQUIPMENT

...engineered by Surface Combustion Corporation, makers of
furnaces that heat most of the products of big-name industry.

ASHBAUCHERS' TIN SHOP

ESTABLISHED 1915

Phone 3-2615

116 N. 1st St.

REMODEL

For The
Coming Holidays
**NO
DOWN PAYMENT**
**3 YEARS TO
PAY**

As Low As \$2.50
per week

HAUGS

HEATING
209 N. 13th St.

PLUMBING

APPLIANCES

Phone 3-3116

OPEN FRIDAY & SATURDAY NIGHTS