

## BUILD! REMODEL!

# GET READY FOR WINTER

## PAINT! LANDSCAPE!

### Paint Can Do Wonders For The Appearance Of A Home

A little paint can give an old home a completely new look. With the use of the proper tones, a small room may be made to appear larger, a large room smaller, a dark room brighter.

Room too small? It will appear spacious when walls are painted in pastels or pale neutral tones. Pale blue, especially makes any room appear much larger.

Room too large? It will look smaller and feel more comfortable and friendly with walls painted a

dark shade.

Room too dark? Try painting it with bright, light tones and see how much more cheerful it will look.

Ceiling too low? Use a color that is much paler than the walls (even a near white) and you can add inches to its visual height.

By painting two opposing walls of a square room a light shade and the other two a darker tone of the same color, you can give the room dramatic interest.

The colors in your home should be the ones that you enjoy living with. However, you will usually be influenced by some shade which you already have . . . probably in a rug or draperies. The idea is to build your new color scheme around this existing shade.

When making the choice of color for a room, bear in mind its exposure. Rooms with warm exposures, southern for example, call for cool walls of green, blue, or gray. Northern exposures, on the other hand, look their best when decorated in pinks, reds, yellows and other warm tones.

Even trim can make a big difference. A simple way to achieve a formal effect in a living room is the use of very light woodwork with dark walls.

### Good Lawn Essential In Landscaping

Some open lawn space is essential for landscape beauty around the home. In many locations where the soil is loamy and rich, a good lawn can be maintained merely by cutting the grass often and allowing the grass clippings to remain, says the American Association of Nurserymen. Only occasional seeding of bare spots and the plucking of weeds by hand or use of a good lawn weed killer is necessary.

Starting with bare ground, however, the following are steps which will assure the kind of lawn you can be proud of.

1. Proper grading and preparation of soil. The ground preferably should slope slightly away from buildings to afford good drainage. If grading is necessary, push the top soil aside first and then replace it on top of the ground when the grading is completed.

The ideal soil is spongy enough to hold a store of water, sandy enough to crumble easily, and has enough clay to hold it together. Additives will give it the right consistency.

tency — if too sandy add clay soil; if too much clay, add sand and mix the top couple of inches thoroughly.

Fertilizer may be added. Commonly used formulas are 12 per cent nitrogen, 6 per cent phosphorus, and 6 per cent potash as well as 10-6-4. Rake in thoroughly.

2. Favorite grasses for different climates vary widely. Be sure of what you are getting. The seed formula will be on the container.

3. After preparing the soil and planting seed or sod as the case may be, a good rolling to firm it down is desirable. Soak well with a fine spray from hose or sprinkler. 4. Watering is highly important. It is necessary for seed germination and to put fertilizer in soluble form for use by the plant. Water whenever the soil becomes dry until the grass is well established.

5. Mow often and allow the grass clippings to remain. Do not cut too short. The ideal way is to remove the top inch of the grass, leaving it at least two to three inches in height, depending on the variety.

#### MOULDINGS ADD CHARM

An easy project for the home handyman is the application of mouldings to add design to plain fireplaces, to form wall patterns suggestive of a picture frame to set off prized pieces of furniture, or to make a room look longer or higher.

#### BATHROOM SAFETY

In remodeling the bathroom, don't overlook such safety factors as grab bars for bathtubs and shower stalls, non-skid finishes for flooring, light switches preferably located outside the bathroom.

#### MAKE IT DIFFERENT

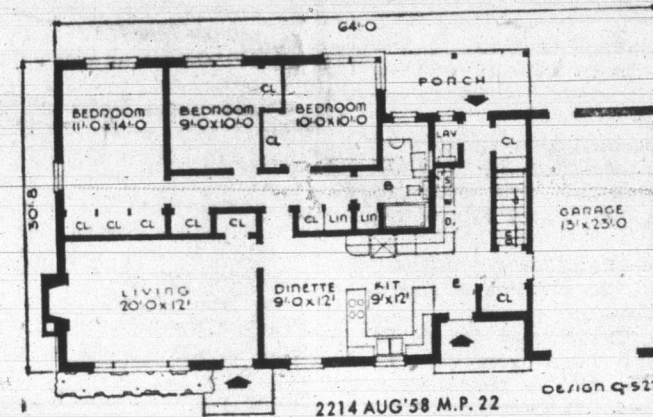
In finishing off your basement, avoid making it a downstairs version of your living room. Your objective should be to create a real "family room" suitable for a variety of activities.

#### CUTTING GLASS

To obtain a smoother cut on glass, dip glass cutter into some kerosene or varnolene before each cut.



A SMALL HOUSE PLANNING BUREAU DESIGN NO. C-522



DESIGN C-522. This plan features ample closet space and a large bathroom with a towel and medicine storage closet and built-in lavatory and dressing table. A lavatory and a utility area that serves as a passage to the covered porch back up with the bathroom.

The exterior combines brick veneer walls, horizontal wide siding in the gable ends, asphalt shingles and wood shutters. Floor area is 1406 square feet (not including garage and porch), cubage is 27,717 cubic feet.

For further information about DESIGN C-522, write the Small House Planning Bureau, St. Cloud, Minn. In Canada, the Small House Planning Bureau of Canada, St. John, New Brunswick.

### Home Improvement Suggestions

#### STRATEGIC LIGHTING

Good lighting can make a small room look more spacious. By focusing light on the ceiling or walls, a room will look higher or wider. Another trick for creating height is highlighting tall draperies. Lighting a dark, unused corner will put it to work and also give you more space.

#### DISTINCTIVE TOUCH

Want to spice-up the decor of your living room? Try paneling at least one wall with wood, then finish it in a hue that contrasts with the other walls.

#### FADE-PROOF WALLPAPERS

The brightest sunlight cannot fade today's modern wallpapers. Unlike in former days, manufacturers now make use of permanent colors and maintain rigid control on the amount of background color to prevent discoloration due to light exposure.

#### FLOOR SCRATCHES

To fix a scratch in hardwood floor that is too deep to remove by sanding, fill with Plastic Wood, building filler a little higher than board surface. Let harden; then sand down and finish with shellac.

#### HANDLING TUBING

To clamp thin wall pipe or tubing in a vise without crushing or scratching it, wrap the tubing with several steel wool pads before inserting in the vise. This gives a slip-proof grip and avoids damage to the tubing.

### Right Roofing Makes A Home Weathertight

In re-roofing a home, the degree of slope or pitch to the roof has an important bearing on the choice of the roofing material most suitable for the job.

The lower the pitch, the more necessary it is to guard against damage to the house by moisture, wind and rain. Water flows more slowly off a low-pitch roof, and the wind is better able to get under the edges of the roofing material.

Asphalt shingles, the most widely used roofing material for homes, can be safely applied on roofs that slope as little as two inches per foot of horizontal run.

Using a special application method developed in recent years, a double-thick felt underlay is, put down. A 19-inch-wide strip of this material is laid first at the eave edge. This is covered with a 36-inch-wide strip, and succeeding strips of this width are laid over the entire roof, overlapping 19 inches each.

When the asphalt shingles are applied, the roofer places a half-dollar sized spot of quick-setting cement under each tab, and presses the shingle down firmly. This bonds the shingle to the one beneath it, and prevents wind and driving rain from getting under the protective armor of the roof.

Some asphalt shingles have a special design which locks the tabs in place, and spots of cement aren't needed. Other types of asphalt shingles have cement pre-applied at the factory.

#### JUST ONE NAIL

Just one nail makes a fine paint brush holder. Lay the brush flat. Drive a roofing nail part way into the handle near the ferrule. The brush will hang by the nail from the rim of the paint bucket.

#### PILOT HOLES

Instead of drilling, save time by punching pilot holes for small wood screws or screw eyes.

#### KEEPING CAN RIMS CLEAN

Paint caking on the rims around paint cans makes it difficult to replace their lids properly. Solve this problem by punching small holes with a hammer and nail in the bottom of the groove that runs around the rims of paint cans.

### First Step Is Careful Planning

If your house is more than 17 years old — and nearly half of America's 26 million family-owned dwellings antedate World War II — chances are you have at least imagined the joys of modernizing your kitchen.

If so, you are right in step with the times, for modernization is an important trend in the United States right now — kitchen remodeling in particular. A survey conducted last year indicates that of all home owners' planning improvements, one out of every five was planning kitchen modernization.

For successful kitchen planning, the preliminary step should be a conference of all members of the family to determine exactly what requirements the kitchen should fill.

#### Important Questions

Planning will be well along by the time you've asked yourselves such questions as: What are the complaints about the present layout? Should there be dining space in the kitchen? Does the whole family gather there frequently? And, is more than one person apt to be working and/or cooking at the same time?

Do we need an extra oven, sink, or more refrigeration space? Where should the washer and dryer go? Are there any structural bottlenecks, such as unnecessary partitions or pantries? Is entertaining an important factor in our family, so that service and clean-up should be made easier than it is now?

And so on and on, until you have a clear picture of how a well-planned new kitchen can harmonize with your family's way of life.

"Remodeling" is a term covering a broad range. Modern straight-line, mix-or-match appliances are designed to stack and fit together in such a way that a custom-look kitchen is the result. In some cases, merely the installation of new cabinets and appliances will modernize a kitchen. From there, remodeling can range all way up to a thorough re-building project that includes walls, floor and ceiling.

#### Features to Check

Whether your remodeling plan is modest or ambitious there are certain physical features which should be checked first, most importantly, the existing plumbing and wiring.

Ancient piping may require re-

placement, and depending on such additions as dishwasher, disposal, and automatic washer, you may require additional traps and plumbing lines.

In many old houses, wiring is outmoded and simply not adequate for today's requirements.

Walls which are badly cracked or damaged can be remedied with the use of an interior wall finish, such as wood panelling or wall-board. Similarly, prefinished wood flooring or tiling can be laid over a deficient flooring.

#### GLASS EDGES

To round or bevel the edge of freshly cut glass wrap a piece of ordinary sandpaper around a sponge or a small piece of foam rubber and sand the edge smooth.

### YOU'RE LUCKY

IF YOU HAVE A gas heat permit!

...but, WHEN YOU SELECT

**HEATING EQUIPMENT**

DON'T FAIL TO INVESTIGATE

**Janitrol**

THE COMPLETELY AUTOMATIC GAS-FIRED LINE ENGINEERED BY GAS HEATING EXPERTS

IF YOUR FURNACE OR BOILER IS IN GOOD CONDITION it's a matter of a single day to make this magical Janitrol gas burner conversion at low cost. It's simple!

AND, OF COURSE, THERE'S A COMPLETE LINE TO CHOOSE FROM

If your old furnace is dirty, drafty, and dry, you'll find a gas-designed replacement economical.

STOP IN OR PHONE

**ASHBAUCHERS' TIN SHOP**

Established 1915  
HEATING - ROOFING  
SPOUTING - SIDING  
AIR CONDITIONING  
116 N. 1st St. Phone 3-2615



In the HOME, Perforall panels keep things neat and orderly—a place for everything—everything in its place. You'll find dozens of uses for these new perforated panels—you can get them in 2'x3'—2'x4'—3'x4'—4'x4'—4'x6' and 4'x8'



Use Perforall in STORES, OFFICES and FACTORIES, too.

Handy-Hooks are available to hold almost any size or shape.

**ARNOLD LUMBER CO. INC.**  
Your Complete Builders Supply Dept. Store  
Winchester St. at Erie R. R.  
OPEN SATURDAY  
till 5:00 P. M.

### MODERNIZE NOW!

Custom Modernization at the Lowest Possible Prices!  
NO DOWN PAYMENT!  
3 YEARS TO PAY!



**CUSTOM KITCHEN PLANNING**  
In WOOD or STEEL

Make Mothers Workshop as Modern as Yours!

**FREE PLANNING and ESTIMATING**

PHONE 3-3316

**HAUGS**

HEATING - PLUMBING - APPLIANCES

209 N. 13th St. Open Fri. & Sat. Nights



**Scotts 89th Anniversary SALE**

Right Now! This Fall—the Best Time To Put New Life New Beauty Into Your Lawn!

	SALE	SAVE
Scotts PICTURE Seed large box	\$7.50	\$1.00
Scotts FAMILY Seed large box	5.95	1.00
Scotts PLAY Seed 2 large boxes	8.50	1.00
TURF BUILDER 2 large bags	8.30	.55
10 large bags	36.50	3.00
COPE, grub proofing large bag	3.40	.55
SCOTTS SPREADERS	10.95	2.00
	13.95	3.00
	19.95	5.00

Scotts... first in lawns

**HABEGGER HARDWARE**

"WHERE OLD FASHIONED COURTESY PREVAILS"  
140 MONROE ST. PHONE 3-3716 DECATUR, IND.

### 10% DISCOUNT ON ALL READY MIX CONCRETE

Make sure of top quality construction for all your concrete work. If you are planning a new . . .

- WALK
- DRIVEWAY
- PORCH FLOOR
- GARAGE FLOOR
- FOUNDATION
- PATIOS
- STEPS

CALL 3-3114

GET OUR PRICES—PROVE FOR YOURSELF YOU GET THE BEST FOR LESS!

**Yost Gravel Readymix, Inc.**

Phone 3-3114 Decatur R. R. 1

Get your home ready and right for winter!

OUTSIDE  
**WHITE HOUSE PAINT**

\$4.95 GAL.  
\$4.59 GAL. in 5 Gal. Cans

INTERIOR  
**FLAT WALL PAINT**

ODORLESS  
\$4.24 GAL.  
White and Colors

### CASH and CARRY

12" x 12"  
**CEILING TILE**  
Snow White and Ivory  
11c Per Tile

3-In-1  
**SHINGLES**  
SELF-SEALING  
\$7.95 Per Square

### CASH and CARRY

OUTSIDE  
**PRIMER** GAL. \$3.85

**RED BARN PAINT**  
\$3.75 GAL. \$3.45 GAL. in 5 Gal. Cans

**A D A M S Builders Supply, Inc.**

309 N. 13th St. Phone 3-3652  
DECATUR, IND.