

A&P Saves Money for Thrifty Millions on EVERYDAY FOOD NEEDS



A&P helps make menu-building easy, exciting and economical! We have a truly amazing variety of every kind of everyday foods (and some wonderful special-occasion features, too) . . . and it's all in one place to simplify shopping! Best of all, the over-all theme is thrift! Come see . . . come save at A&P!

PAN-READY Fresh Fryers lb. 49¢

"SUPER-RIGHT," BLADE CUT
Chuck Roast lb. 37¢

- | | |
|---|---|
| Choice Steaks "Super-Right" ROUND or SWISS lb. 79¢ | Beef Stew "SUPER-RIGHT" BONELESS lb. 59¢ |
| Sliced Bacon "SUPER-RIGHT" THICK SLICES 2 lb. 99¢ | Slab Bacon WHOLE OR END PIECE lb. 39¢ |
| Veal Breast FINE FOR STEWING lb. 19¢ | Large Bologna "SUPER-RIGHT" BY-THE-PIECE lb. 39¢ |
| Veal Roast "SUPER-RIGHT" SHOULDER CUT lb. 39¢ | Skinless Franks "SUPER-RIGHT" ALL MEAT lb. 45¢ |
| Boiling Beef "SUPER-RIGHT" PLATE MEAT lb. 19¢ | Fish Sticks CAP'N JOHN FROZEN, COOKED 10-oz. 39¢ |
| Leg-O-Lamb "SUPER-RIGHT" GENUINE SPRING lb. 69¢ | Frozen Oysters KIRKPATRICK 12-oz. can 59¢ |

ELBERTA OR HALE HAVEN Peaches Bushel, \$3.98 4 lbs. 35¢

- | | |
|--|--|
| Grapes THOMPSON SEEDLESS 2 lbs. 29¢ | Watermelons RED-RIPE 28 TO 30-LB. AVG. ea. 69¢ |
| Santa Rosa Plums RED-RIPE lb. 29¢ | Cantaloupe JUMBO 27 SIZE 2 for 49¢ |
| Bartlett Pears LOCALLY GROWN bu. \$4.29 | Potatoes U.S. NO. 1 GRADE COBBLERS 50 lb. bag 99¢ |
| Sweet Potatoes GOLDEN JERSEYS 3 lbs. 29¢ | Yellow Onions U.S. NO. 1 GRADE 10 lb. bag 49¢ |
| Red Malaga Grapes LARGE, SWEET 2 lbs. 29¢ | Golden Yams LOUISIANA 3 lbs. 29¢ |

SULTANA BRAND Pork & Beans 52-oz. can 29¢

WHITEHOUSE INSTANT NON-FAT
Dry Milk Solids 9.6-oz. can 23¢
DISSOLVES INSTANTLY IN ICE WATER — MAKES 3 QUARTS

- | | |
|---|---|
| Evaporated Milk WHITEHOUSE 6 tall cans 70¢ | Angel Soft Facial Tissue pkg. of 400 23¢ |
| Apricot Halves A&P BRAND 3 30-oz. cans \$1.00 | Wax Paper KITCHEN CHARM 2 30-ft. rolls 39¢ |
| Freestone Peaches A&P BRAND 3 20-oz. cans \$1.00 | Instant Fels SOAP GRANULES giant 72¢ |
| Fruit Cocktail SULTANA BRAND can 37¢ | Felso ALL PURPOSE DETERGENT 2 18-oz. pkgs. 45¢ |
| Grapefruit Sections A&P BRAND 4 16-oz. cans 55¢ | Fels Naptha Soap 6 bars 53¢ |
| Yukon Club ASSORTED BEVERAGES 3 34-oz. bot. 29¢ | Sprite MAKES DISHES SPARKLE 12-oz. bot. 29¢ |
| Orange Juice A&P — OUR FINEST QUALITY 48-oz. can 29¢ | Tomato Catsup HUNTS 2 14-oz. bot. 35¢ |
| Tomato Juice A&P BRAND "NEW PACK" 18-oz. can 10¢ | Dill Pickles DAILEY KOSHER STYLE qt. 29¢ |

- | | |
|---|---|
| Bar Cake JANE PARKER SPANISH ea. 33¢ | Longhorn Style Cheddar Cheese lb. 49¢ |
| Blackberry Pie LARGE 8-INCH JANE PARKER ea. 39¢ | Small Eggs SUNNYBROOK GRADE "A" 2 doz. 71¢ |
| Donuts JANE PARKER PLAIN, CINNAMON OR SUGARED doz. 19¢ | Cheese Food CHED-O-BIT AMER OR PIM 2 1-lb. pkgs. 73¢ |
| Sandwich Rolls SLICED — ROUND OR HOT DOG pkg. of 8 20¢ | Ice Cream PAGES VANILLA 1/2 gal. 69¢ |
| Twin Rolls GOLDEN BROWN HEAT-N-SERVE pkg. of 12 23¢ | Sliced Cheese MEL-O-BIT PROC. AMER SWISS OR PIM pkg. 29¢ |

- | | |
|---|---|
| Keyko Margarine 1-lb. can 30¢ | Lifebuoy 2 BATH SIZE 27c 3 reg. size 28¢ |
| Ajax Cleanser 2 LARGE 37c 3 reg. 37¢ | Spry PURE VEGETABLE SHORTENING 3 lb. 89¢ |
| Surf LARGE 30c giant 72¢ | Lux Soap 2 BATH SIZE 25c 3 reg. size 25¢ |
| Breeze WITH CANNON DISH TOWEL giant 75¢ | Heinz Ketchup 2 14-oz. bot. 49¢ |
| Rinso Soap LARGE 30c giant 72¢ | Soap PALMOLIVE 2 BATH SIZE 25c 3 reg. size 25¢ |
| Rinso Blue LARGE 30c giant 72¢ | |
| Silver Dust NEW BLUE WITH CANNON FACE CLOTHS large 32¢ | |
| Vim FOR AUTOMATIC WASHERS LOW SUDS DETERGENT giant 71¢ | |
| Liquid Lux 12-OZ. CAN 37c 22-oz. can 67¢ | |

SEPTEMBER ISSUE NOW ON SALE
woman's day THE A&P MAGAZINE 7¢

All Prices In This Ad Effective Through Saturday, Aug. 27



Steel Industry Is Headed For Record

New Production Record Is Seen

NEW YORK (INS) — The magazine Iron Age reported today that the steel industry is headed for new records in order volume and in production.

According to the publication, the hard hit northeastern sections of the country will need large ton-nages and plates for bridges knocked out by flood waters. In addition, emergency calls for other steel will be made, all of which will tend to further tighten up the steel picture.

Iron Age noted that soon the auto industry will be stepping up its already high level order volume for sheets, bars, stainless and other products.

On top of that, it reported that during the balance of the year, demands from construction, railroads, farm implement makers, appliance manufacturers and from hundreds of miscellaneous steel users will be piled upon the record requirements of the auto industry. Thus, said the publication, there will be enough incessant steel demand for support 100 per cent operations for some time.

It observed, however, that steel mills are in no position to reach 100 per cent operations in the near future, with more rehabilitation needed to put equipment in tip-top shape.

As a result, said Iron Age, steel deliveries will slip further behind in September and blacklogs will mount.

U.S. Farmers Raise 63,000,000 Turkeys

WASHINGTON (INS) Farmers are reported to be raising slightly more than 63 million turkeys this year, four per cent less than last year according to preliminary Agriculture Department estimates.



WASHINGTON TRANSIT workers wave as test vehicle leaves car barn at end of the 52-day strike. The strikers won a pay increase, and fares were upped. (International Soundphoto)

Israel, Egypt Quit Border Area Talks

U. N. Is Invited To Tackle Problem

CAIRO (INS) — The Egyptian government announced officially today that it has broken off the talks with Israel aimed to reduce tension in the Gaza border area.

An Israeli army patrol two days ago stormed across the armistice line and captured an Egyptian outpost in the "Gaza Strip" area, scene of frequent fighting.

The patrol later gave up the post when UN observers arranged a cease fire to enable the Egyptians to remove a dead officer and four wounded men from the battleground.

The Israelis claimed that an Egyptian attack on the patrol in an open field forced the latter to

storm the Egyptian position. Egyptians blamed the assault on the Israelis, and said it was an attempt to coerce Cairo into accepting Israeli proposals in the deadlocked border talks.

U.N. officials for months have been trying to effect an arrangement that would pacify the area. Israel proposed direct meetings and telephone links between commanders on the two sides of the border, but Egypt insisted on UN officers acting as intermediaries.

12-Year Old Girl Is \$16,000 Querie Winner

NEW YORK (INS) — "The Eyes, pecky little Gloria Lockerman, the 12-year-old Baltimore youngster won her \$16,000 Querie" Tuesday night and next week goes on her \$32,000 plateau.

The pert saucer eyed miss reiterated the program's superb selectivity in locating people with personalities attuned to the attrac-

tive long run. She certainly proved her intuitive sense of theatre with her unselfconscious hesitation during the spelling and her very cute question as to whether "chrysanthemums" was to be spelled in the singular or plural drew a fine fond guffaw.

Marine Capt. Richard McCutchen, ambassador from the Halls of Montezuma to the Halls of Mazuma, blithely masticated the food, queries in his tasty category and will be back next Tuesday for his 16,000 entree.

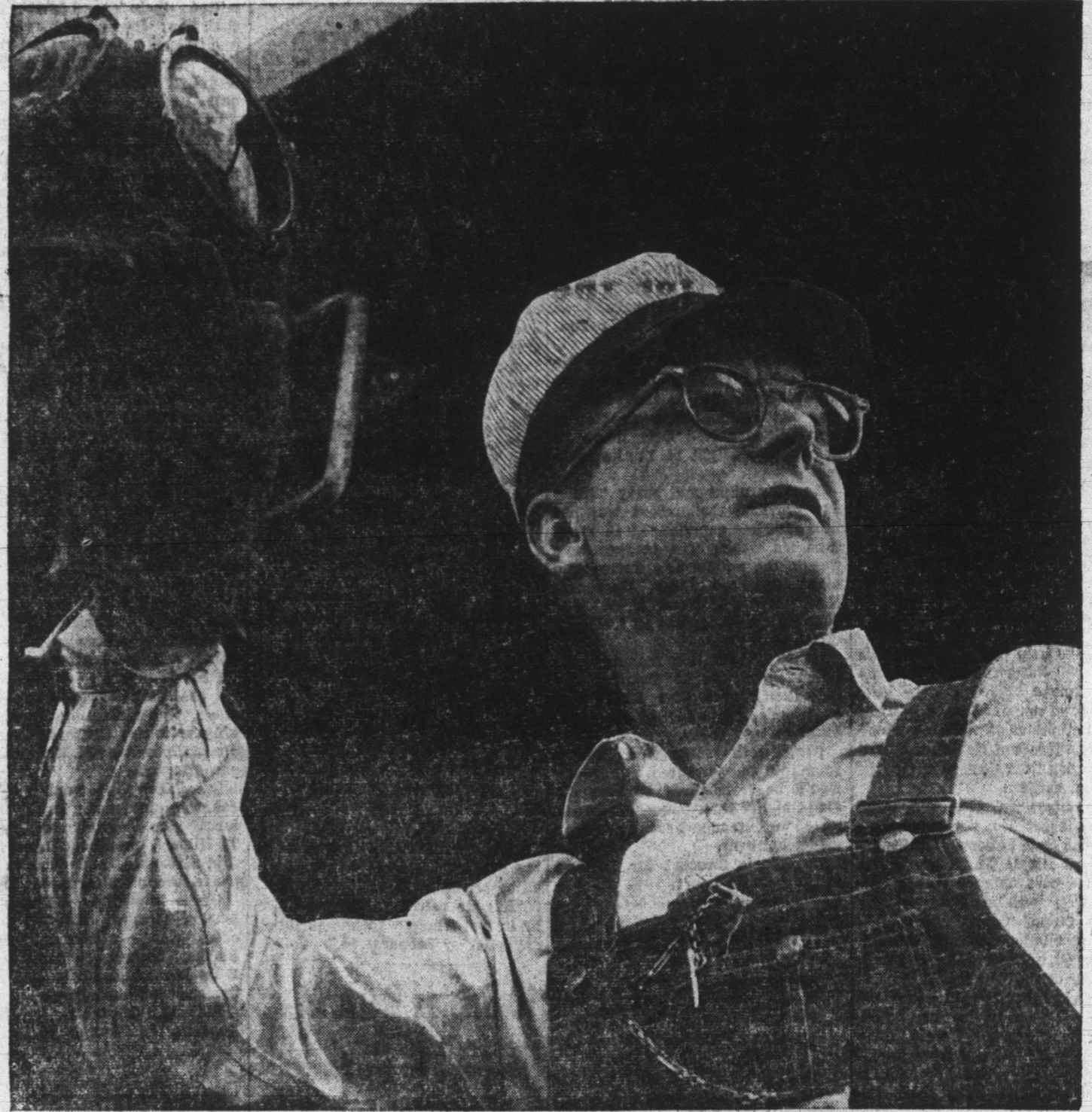
Madison — One pound of cheese requires up to 10 pounds of milk, depending upon the texture and variety of the cheese.



The Welcome Wagon Hostess

Will Knock on Your Door with Gifts & Greetings from Friendly Business Neighbors and Your Civic and Social Welfare Leaders

On the occasion of:
The Birth of a Baby
Sixteenth Birthdays
Engagement Announcements
Change of residence
Arrivals of Newcomers to City
Phone 3-3196 or 3-3479



THE MAN IN THE RED CABOOSE

THE MAN in the red caboose is not in the public eye like Erie's passenger conductors, but his job as "boss man" on a freight train is just as important. The red caboose is his office on wheels. From here he is in constant touch with the engineer up ahead by radio-telephone relaying information about cars to be set off or picked up. He keeps a careful record of every car in his train—where it came from, where it is going, the weight of its contents and kind of commodity. These cars may be carrying anything ranging from fruit and meat to building

materials and all the other things that mean better living for everyone in your community.

This freight conductor is just one of the team of 19,000 Erie men and women who are working together to bring you better service and help contribute to the growth and prosperity of your community. Many of them are your fellow neighbors and home town partners. You can depend on them . . . you can depend on the Erie.

AS YOUR COMMUNITY GROWS, SO GROWS THE ERIE



Erie Railroad

DEPENDABLE SERVICE BETWEEN NEW YORK AND CHICAGO

