



**SMILING BROADLY**, President Truman presents Gen. George C. Marshall with the leather upholstered chair which the latter used as a Cabinet member, as Secretary of State and Secretary of Defense. Looking on at the Washington ceremony are Vice President Alben W. Barkley (left), Secretary of the Treasury John W. Snyder (rear, center) and Secretary of the Interior Oscar Chapman. (International Soundphoto)

## ITCH

**Don't Suffer Another Minute**  
No matter how many remedies you have tried for itching of eczema, psoriasis, infections, athlete's foot or whatever your skin trouble may be—anything from head to foot—**WONDER SALVE** and **WONDER SOAP** can help you.

**Developed for the boys in the Army—now for you folks at home**  
**WONDER SALVE** is white, greasy, antiseptic. No ugly appearance. Safe for children. Get **WONDER SALVE**—results or money refunded. A truly wonderful preparation. Try it today. For rectal troubles, get **PYLOX**, white, greasy, no staining. Pain relieving. Large tube with applicator and key.  
Sold in Decatur by Smith, Kohne, and Holthausen Drug Stores; or your hometown druggist.

### SALE CALENDAR

- OCT. 25—Louis Schoenike, 2 miles East and 1 mile South of Antwerp, Ohio. Improved 143 Acre Farm, 1:30 P. M. Midwest Realty Auction Co., J. F. Sammann, Auctioneer.
- OCT. 26—Benj. Davison, 6 miles north of Columbia City, Ind. General farm sale. Roy S. Johnson & Son & Melvin Liechty, aucts.
- OCT. 26—1:00 P. M. Maurer & Reissler, Owners. 4 miles west of Portland on Road 67 to Blain then 1 mile north. Spotted Poland China Sale. Vaughn Lipp & Ray Elliott, Aucts.
- OCT. 27—1:30 p. m. Fern Bowsher, Executrix, Frederick C. Hoeneisen estate, 822 W. Adams St., Decatur. Furniture. The Kent Realty & Auction Co. G. Strickler, D. S. Blair, aucts. C. W. Kent, sales mgr.
- OCT. 27—Glen Hirschy & Wm. Alfalter, 4 miles east of Decatur on road 101. Complete closing out farm sale. Roy S. Johnson & Son & Melvin Liechty, Aucts.
- OCT. 27—7:00 P. M. Indiana State Yorkshire Sale. Fairgrounds, Portland. Vaughn Lipp, auctioneer.
- OCT. 27—1:00 P. M. Miesch & Metzger. Duroc Boar and Gilt Sale. Jct. 5, 105, 14.
- OCT. 28—Dr. G. W. Lies, Fort Recovery, Ohio. 90 registered Holstein cattle. Roy S. Johnson & Son, Aucts.
- OCT. 30—Dr. G. W. Lies, Fort Recovery, O. 2 farms, 380 acres, all farm implements, feed, crops, etc. Roy S. Johnson & Son & Melvin Liechty, Aucts.
- OCT. 30—7:00 P. M. Mr. & Mrs. Paul Strickler, 516 Mercer Avenue. Furniture Sale. The Kent Realty & Auction Co. G. Strickler, D. S. Blair, auctioneers. C. W. Kent, Sales Mgr.
- OCT. 31—10:30 A. M. Mrs. Arloa West, administratrix of Joby West estate. 4 mi. S. of Decatur on U. S. 27, 3 mi. west, then south to first farm. Farm machinery, cattle, household goods. Kent Realty & Auction Co., G. Strickler, D. S. Blair Auctioneers. C. W. Kent, Sales Mgr.
- NOV. 1—Bell & Stoutenberry, 2 miles east of Decatur. Registered Holstein cattle sale. Roy S. Johnson & Son & Melvin Liechty, Auctioneers.
- NOV. 2—Benj. H. Miller, 4 miles east, 1 mile north of Berne. Disposal sale registered Ayreshire cattle. Roy S. Johnson & Son & Melvin Liechty, Aucts.
- NOV. 3—Heirs of E. B. Johnson estate, Antwerp, Ohio. Beautiful modern residence property. Midwest Realty Auction Co. J. F. Sammann, auctioneer.
- NOV. 3—2:00 p. m. The Ludwick Grain & Coal Co., Selma, Ind. Elevator. The Kent Realty & Auction Co. G. Strickler, D. S. Blair, aucts. C. W. Kent, sales mgr.
- NOV. 3—1:00 p. m. Raymond Crist, Admr, Hulsah J. Crist, Van Buren street and Highway 124 in Monroe. Household goods. Roy and Ned Johnson & Melvin Liechty, aucts.
- NOV. 6—10:00 A. M. A. L. "Tony" Baker, 1/2 mile east of Chattanooga. First farm east of Lutheran church, 153-acre farm (2 tracts) and personal property. Roy S. Johnson & Son & Melvin Liechty, Aucts.

### PUBLIC AUCTION SELMA, INDIANA ELEVATOR. KNOWN AS LUDWICKS GRAIN & COAL CO. SATURDAY, NOVEMBER 3, 1951 2 P. M.

LOCATED 6 miles East of Muncie, Indiana on State Road No. 32 in Selma, Indiana.

This elevator is located in Selma, Indiana and is surrounded by a very fine farming community. It is on the New York Central Railroad and is the only elevator in the town.

The building is in very good state of repair and has mostly metal siding and roof, ample storage space for feeds, seeds and merchandise, nice large office with modern equipment, including calculators, typewriters, duplicate cash register and safe. The business carries 8 employees and does a yearly business of over 1/2 million dollars. The scales are 22 ton capacity and grain storage is 15,000 bu. It can handle 900 bu. of grain an hour. Business the past year included 103 cars in and out; about 100 tons of concentrate per month; 60 cars of coal, 496 tons of fertilizer and in addition it handles a line of farm equipment, including fence, feeders and fountains. Some of the equipment that goes with the elevator, is as follows:

2 - '49 Ford trucks; 1 - 1950 Ford truck; '47 Chevrolet truck and a '49 Chevrolet Semi with 24 ft. trailer; 2 Coal conveyors, car loader, drags and screw, 2 mixers; shell, revolving screen cleaner, 16" hammer mill, grain tester, and many other items that are needed to run a busy elevator.

The building is located on about 5 acres of land and the lease is \$250.00 per year. The coal yard is on 1 1/2 acres of land that will be deeded to purchaser. Merchandise on hand will be inventoried at cost, at the time purchaser takes possession.

Inspection invited at anytime and for further information please contact the agents in Muncie, Indiana or Decatur, Indiana.

**THE LUDWICK GRAIN & COAL CO.  
MR. & MRS. RICHARD LUDWICK  
Owners**

C. W. Kent, Sales Manager  
D. S. Blair and G. G. Strickler—Auctioneers  
The Farm & City Homes, Inc., Muncie, Indiana.  
Phone 3-1404 Local Brokers  
Sale Conducted by The Kent Realty & Auction Co.  
Decatur, Indiana Phone 3-3390  
Not responsible for accidents.

### Lad With Pendant For Opening Gates Warned By Sheriff

Say, have you heard the one about the 13-year-old St. Mary's township boy that loves the wide open spaces? No? Then listen. Loves them so much, in fact, that he can't stand seeing a gate left closed, must always be opening them, and he is posing something of a problem for sheriff Bob Shraluka.

For the lad has a pendant for opening farmers' gates. A sort of full-blown victim of claustrophobia that doesn't stop at a mere dread of closed rooms.

The boy was questioned by the sheriff. He said he liked to open gates. "Been doing it for more than a year," said the boy to sheriff Shraluka.

The youth worked at the job. One instance is recalled when he wanted a gate open. He had been operating in the vicinity for some time, and the farmer intended the gate be closed, so he nailed it.

It didn't deter the lad. He pried it open. "Just can't stand closed gates," he said to himself, and went to work with a vengeance and a crowbar.

"All in a day's work," he hummed when he'd finished opening this particularly tough gate. The lad sighed deeply.

Then one day he opened the gate and let out a cow which a farmer valued at \$400. The farmer said that the cow got into the corn, indulged too much, became ill, then died.

The farmer informed the sheriff. The sheriff pondered the question, what to do? He talked with the lad, pointing out the importance of keeping gates closed. He said to the boy that probably St. Peter was too much competition in the field of opening gates, and he should try a new avocation.

The farmer whose cow died from eating too much corn said he would not prefer charges against the youth. So the matter stands.

There isn't a gate in St. Mary's township that doesn't keep an apprehensive eye peeled, though, to this very day.

### Withholding Rates Will Be Increased

#### Higher Income Tax Effective Nov. 1

Washington, Oct. 24 — (UP) Unless you can wangle a raise in the meantime, your pay check is going to be smaller next month.

First effects of the increase in income taxes under the new law will be felt then by all wage and salary earners whose pay is subject to the federal withholding levy.

The withholding rates will be increased 11 to 12 percent on all pay checks issued on or after Nov. 1—or as soon thereafter as employers can readjust their book-keeping to do it. The bureau of internal revenue says that because of the short time since the bill was enacted it will not insist on employers observing the exact date.

Here are some examples of the increases in withholding tax: If you are single, make \$70 to \$72 a week, and pay \$10.50 a week through withholding taxes now, you will pay \$11.60 a week.

If you are married, have no children, make \$100 to \$105 a week, and pay \$13.80 now through withholding taxes, you will pay \$15.40 a week.

If you are married, have two children, make \$140 to \$145 a week, and pay \$16.40 a week now, you will pay \$18.20 under the new law.

You can figure out for yourself about what your tax increase will be. For most people it will be close to 12 percent of what you pay now.

The withholding tax is a pay-as-you-go device which for most taxpayers roughly approximates the actual amount of federal income tax.

But everyone—including persons subject to withholding—must file final tax returns for 1951 sometime between the end of the year and next March 15.

When they do so they will find that their total 1951 income tax is about two percent higher than it was for last year. This is because the 11 percent tax increase will be effective for only one-sixth of this year—November and December. On an annual basis, the full effect of the increase will be felt on 1952 incomes.

Persons who pay all or part of their income tax in quarterly installments will make their next payment on Jan. 15. They can make it at the old rates if they want to and not pay the increase until they make their final 1951 settlement on March 15.

The common match is also a deodorant. Tests by chemists have demonstrated that the sulphur dioxide given off by burning matches effectively overcomes cooking and other indoor smells.

- Broadcast
- CHILI WITH BEANS** . . . 16-oz. can **33¢**
- Old Dutch
- CLEANSER** . . . . . 2 cans **25¢**
- Baker Maid
- SALTINES** 4-in-1 pack . . . . . lb. **31¢**
- Kiddies Love
- CRACKER JACK** . . . . 3 pkgs. **14¢**
- Helps Prevent Body Odors
- DIAL SOAP** . . . . . 2 bath size cakes **37¢**

- New Pack
- Green Giant Peas** 2 No. 303 cans **37¢**

- Pure, Safe
- IVORY FLAKES** . . . . . lge. pkg. **30¢**
- For Smoother Skin
- CAMAY SOAP** . . . . . 3 reg. cakes **25¢**
- For Sparkling White Clothes
- OXYDOL** . . . . . lge. pkg. **30¢**
- White Naptha
- P&G SOAP** . . . . . 3 bats **25¢**
- For Easier Cleaning
- SPIC & SPAN** . . . . . 16-oz. pkg. **24¢**

- Whole Kernel
- Niblets Corn** . . . 2 12-oz. cans **35¢**

- Cashmere Bouquet
- TOILET SOAP** . . . . 2 bath size cakes **27¢**
- Cashmere Bouquet
- TOILET SOAP** . . . . 3 reg. cakes **29¢**
- Sanitary Napkins
- MODESS** . . . . . pkg. of 12 **39¢**
- My-T-Fine
- DESSERTS** all flavors . . . . 3 pkgs. **23¢**
- My-T-Fine
- LEMON PIE FILLER** . . 2 banded 4-oz. pkgs. **9¢**

- Heinz Oven
- Baked Beans** . . . . 16-oz. can **16¢**

- LaChoy Combination
- CHINESE DINNER** . . . . . pkg. **58¢**
- LaChoy
- BEAN SPROUTS** . . . . 16-oz. glass **14¢**
- Granulated Ivory Soap
- IVORY SNOW** . . . . . lge. pkg. **30¢**
- Does Everything
- DUZ** . . . . . lge. pkg. **30¢**
- Gets Clothes Cleaner
- TIDE** . . . . . lge. pkg. **30¢**

- Heinz Cream of
- Tomato Soup** . . . 2 11-oz. cans **23¢**

- Bath Size
- PALMOLIVE SOAP** . . 2 cakes **25¢**
- Miracle Cleanser
- AJAX CLEANSER** . . . 2 cans **27¢**
- Woodbury's Deal
- TOILET SOAP** . . . . 4 banded reg. cakes **29¢**
- Borden's
- STARLAC** Makes 5 Qts. Non-Fat Milk . . . . 16-oz. pkg. **38¢**
- Ralston's
- WHEAT CHEX** . . . . . 12-oz. pkg. **19¢**

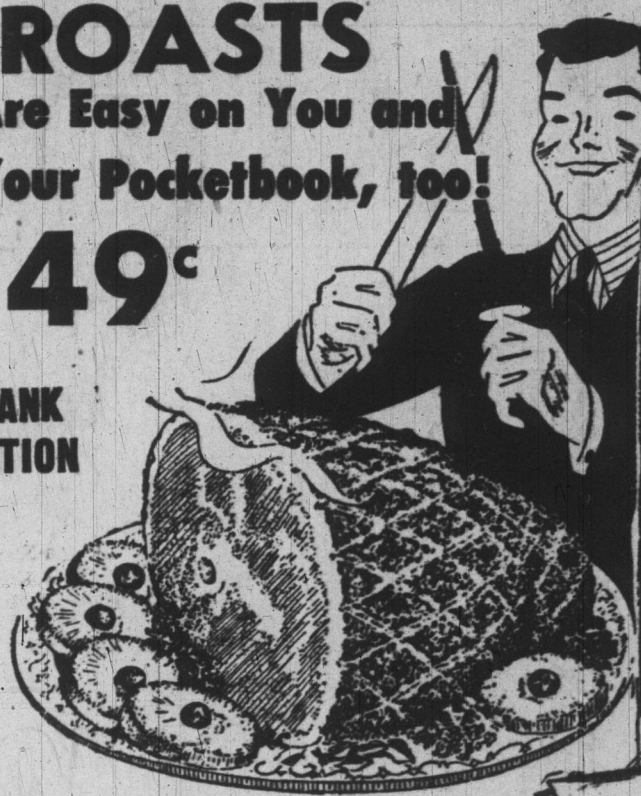
## A&P's Famous "Super-Right"

### FRESH HAM ROASTS

Are Easy on You and Your Pocketbook, too!

lb. **49¢**

SHANK PORTION



### Customers' Corner

Millions of Americans do their shopping at A&P because they know they will find:

- Good food
- Good service
- Good values

If you have any suggestions as to how we can make these good features at your A&P even better, please let us know. Please write:

**CUSTOMER RELATIONS DEPT.**  
A&P Food Stores  
420 Lexington Ave.  
New York 17, N. Y.

- Fresh Picnic
- Pork Roast** lb. **39¢**

- Completely Dressed Fresh
- DUCKLINGS** ready to fry or roast lb. **59¢**

- A&P's famous "Super Right"
- Cooked Hams** Shank Portion lb. **49¢**

- By the piece
- Braunschweiger** . . . lb. **69¢**

- Fresh tender
- Ground Beef** . . . lb. **65¢**

- Young, tender
- Fryers** Pan-ready . . . lb. **59¢**

- Tasty, tender
- Shrimp** large size . . . lb. **59¢**

- First of the season—Mixed
- Holland Herring** 9-lb. keg **\$1.79**

- Frozen
- Haddock Fillet** . . . lb. **45¢**

- Completely dressed
- Turkeys** oven-ready 13 to 22-lbs. . . lb. **59¢**

- Jonathan All-Purpose
- APPLES** 4 lbs. **29¢**

- Golden Ripe.
- BANANAS** . . . 2 lbs. **29¢**

- Juicy Florida — Jumbo Size
- Grapefruit** . . . 2 for **25¢**

- For Halloween Treats
- Roasted Peanuts** 1-lb. bag **39¢**

- Marvin
- Pitted Dates** . . . 7 1/2-oz. pkg. **19¢**

- Domestic
- SWISS CHEESE** lb. **59¢**

- Wisconsin
- BRICK CHEESE** lb. **49¢**

- Wispride — It Spreads
- Cheese Food** . . . lb. **59¢**

- Sunnybrook Small Size
- Grade A Eggs** . . . doz. **53¢**

- Canned Evaporated
- Whitehouse Milk** 2 tall cans **27¢**

- Ann Page Prepared
- Spaghetti** . . . 2 15 1/2-oz. cans **27¢**

- Gold Medal, Pillsbury, or Robin Hood
- Flour** . . . . . 25-lb. bag **\$2.15**

- Van Camp
- Grated Tuna** . . . 6-oz. can **23¢**

- Iona
- Tomato Juice** . . . 46-oz. can **25¢**

- Worthmore
- Candy Corn** . . . 1-lb. pkg. **29¢**

- Quick Cooking
- 3-Minute Oats** . . . pkg. **10¢**

- HI-HO
- Saltines** . . . . . lb. **36¢**

- Jane Parker
- DONUTS**
- Plain, Sugared or Cinnamon
- Pkg. of 12 **19¢**

- Fresh Jane Parker
- Pumpkin Pies** . . . each **39¢**

- Cocoanut Cake
- Gold Layer** . . . 6 1/2 inch each **59¢**

- Jane Parker "Extra Fine"
- White Bread** . . . 20-oz. loaf **16¢**

- Fresh Jane Parker
- Potato Chips** . . . 1-lb. pkg. **63¢**

**A&P Super Markets**  
THE GREAT ATLANTIC AND PACIFIC TEA COMPANY