

# **DECATUR DAILY DEMOCRAT** Published Every Evening Except Sunday By THE DECATUR DEMOCRAT CO. Incorporated

Entered at the Decatur, Ind., Post Office as Second Class Matter, March 1, 1911. Postmaster: Dick D. Heller. President: A. R. Holthouse. Editor: C. E. Holthouse. Treasurer: J. H. Heller. Vice-President: J. H. Heller.

**Subscription Rates**  
By Mail in Adams and Adjoining Counties: One year, \$6; Six months, \$3.25; 3 months, \$1.75.  
By Mail, beyond Adams and Adjoining counties: One year, \$7.00; 6 months, \$3.75; 3 months, \$2.00.  
By carrier, 20 cents per week. Single copies, 4 cents.

The average newspaper man finds it easy to turn out columns of copy of a reportorial nature, but most difficult to fill a "must" assignment for a daily column, especially in torrid weather.

The Hiss trial is about at an end, and the country will be glad to be rid of this and other cases like the Chambers, Judith Coplon, the Eislens and others charged with Communistic acts.

The legal steps for setting up the zoning ordinance and adoption of the city planning map, should be done as quickly as the council completes its study. If adjustments or changes are necessary, they should be made, but as a whole the plan should be approved and placed on the city record.

Does your dog go "clump, clump" on a wooden floor? If so, he may, according to veterinarians, have "hard pad disease." While hard, ironlike pads are the most noticeable symptom, others, similar to those in distemper, appear later, often causing death. When the dog recovers, the hard pads come off, leaving normal tissue below. Fortunately a vaccine has been developed which is very effective. It is good to know that the advance of modern medical science is not neglecting the family pets.

Robert F. Wagner, Jr., son of New York's veteran United States Senator who has resigned, is one of those favored to fill his father's place in Congress. The young lawyer has a large following among the Democrats. Other leaders favor Herbert H. Lehman, four times governor of the Empire state, and former representative overseas in the European Recovery program. One of these men will be nominated and with the mayoralty election in New York City scheduled at the same time, the dopesters predict that a Democrat will be sent to the senate. Senator Wagner ably served his state and nation and his son has the advantage of his father's famous reputation in the field of labor legislation.

The Indiana-Michigan Electric Company, formerly the Indiana Service Corp., came to Decatur's rescue in 1942 when a 3,000 K. W. turbine blew up at the municipal utility, and within 24 hours had a high tension line strung to the

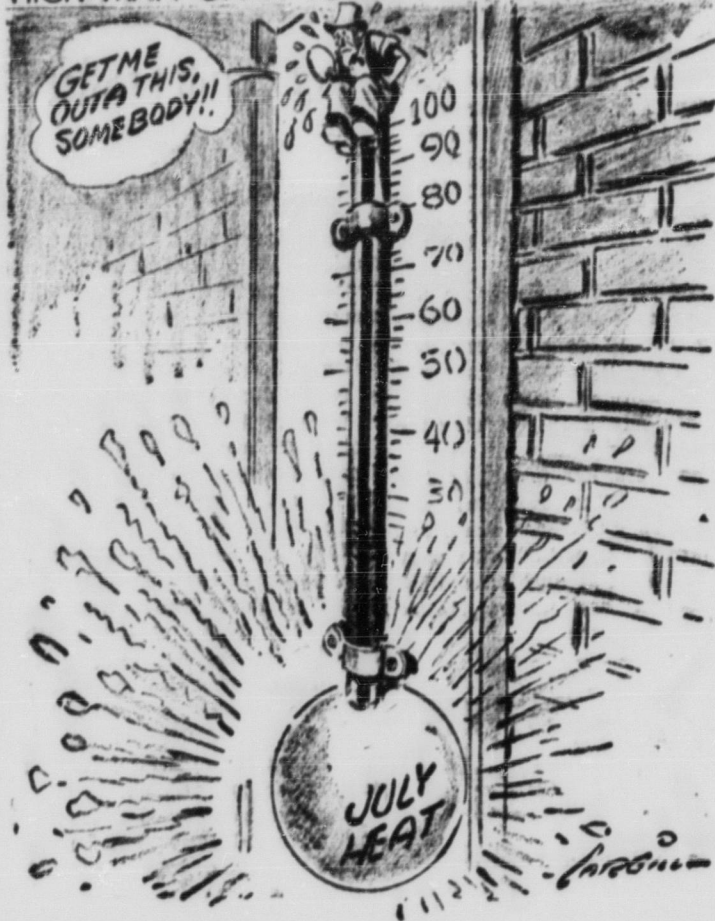
plant. It has given the city with "stand-by" service and additional power needs during the past seven years. The Company demonstrated a fine spirit of cooperation, which made it possible for our electric utility to carry on in supplying industry, home owners, stores and the rural lines with sufficient current during a decade of rapid growth. In terminating the contract next June, the city should say "thank you" to the present utility management for an appreciated service during past years.

Mayor Doan and the city council have decided to expand the municipal power plant with a Diesel unit, the building to be located on city property on North Seventh street, facing Dayton Avenue on the north. Officials claim that this unit will give the utility a reserve for future expansion and will be more economical to operate than a steam generated power plant. It will be the first time that the city has embarked on an oil burning power unit, a change which railroads, individuals and many industries are making these days in view of high coal prices. One thing is certain, this city must keep up with demands for electric power and those in charge are expected to provide a plant that will not only meet this demand, but allow for future growth. In this respect city officials say that the Diesel engine auxiliary plant will meet present and future power needs for a growing city.

**Luxury Taxes:**  
The proposal to reduce federal "luxury" taxes to the pre-war level suddenly has come to life again. It is a very pleasant idea, and enactment of the cut would be an especially happy occasion for taxpayers, who are usually glad to see any kind of a tax cut. The "luxury" taxes have been and are annoying to those who would be a luxury we are not at the moment prepared to pay for. It is variously estimated that the excise tax cuts now proposed in the Senate would cost from 550 to 750 millions in lost revenue. Where would the money come from to supplant that amount? For the year just ended the government went into the red by nearly two billion dollars. Congress has not finished appropriating money for the year now started, but the most optimistic hope is that the budget for this year might possibly come within two billions or so of a balance. Congress does not seem to be in a mood for enacting new taxes; neither does it seem amenable to any idea of cutting expenditures. Any tax cut would merely mean a bigger deficit.

Unless we are willing to go further into debt for the sake of cutting the excise taxes, a policy generally lacking in wisdom, we'll have to go on paying them until we are ready to pay other taxes instead, or to get along with less expensive government.

## **HIGH MAN ON A TOTEM POLE, OR SOMETHING**



### **20 YEARS AGO TODAY**

July 7, 1929 was Sunday.

#### **Modern Etiquette** By ROBERTA LEE

Q. Is it obligatory that a woman wear black garments when attending a funeral?  
A. No this is not necessary unless she is to be with the bereaved family. Even in this case, it is not always done. She should however, wear dark or subdued clothes.  
Y. Is it all right for a man to use only his initials when signing social correspondence?  
A. No; he should sign his full

#### **Household Scrapbook** By ROBERTA LEE

**Blankets**  
See that the blankets are thoroughly clean before storing them, then pack with moth balls and newspapers, leaving no cracks for moths to enter. If properly done, this is just as effective as moth-proof bags.  
**Preventing Strain**  
Do not try to lift any heavy object with the back bent. Always crouch down and lift with a straight

spine, making the weight come on the arms. A sprained back can be avoided in this way.

#### **When Shampooing**

Use Vaseline jelly or cold cream and grease the area around the eyes before the shampoo, and soap will be prevented from entering the eyes.

### **Court News**

#### **Asks Divorce**

Ireta B. Welch filed a complaint for divorce against her husband, John R. Welch, charging cruel and inhuman treatment. The couple was married April 6, 1929.

### **Homemaking Tips**

by Anna K. Williams

#### **Bargains**

Many homemakers will be looking for bargains during the summer "white sales." However, a bargain may not always be a bargain.

Here are some suggestions to help the homemaker get her money's worth. When buying sheets, look for those with firm weave, little sizing, torn fabric, which will help to hold the shape of the sheet and hems with strong, short, even stitches.

The homemaker can examine for closeness and evenness of weave by holding the sheet to the light. For good wearing quality, the weave ought to be firm. There should be about the same number of crosswise as up-and-down yarns.

Some homemakers test for the amount of sizing (although not always a reliable test) by rubbing a corner of the sheet between their hands. If a considerable amount of sizing is present, it may be covering up a coarsely woven fabric. This will show up after one or two washings.

For longer wear the homemaker will select sheets with tape type selvages; these have extra yarns woven in for reinforcement and strong finish on the outside edge.

For easier bed-making and comfort to the sleeper, the sheets should be long enough. Thick mattresses need wider sheets. Those for a single bed should be 63 or 72 inches wide and 99 or 108 inches long, and 81 or 90 inches wide and 99 or 108 inches long for a double bed.

A good label will tell more than the size of the sheet. It will include the torn size before hemming; the thread count, warp and filling; the

breaking strength; weight per square yard; amount of sizing; and the grade, whether it is first or second.

#### **Well Planned Area Meets Family's Needs**

Rooms of the well-planned sleeping area will be located together in the quiet part of the home. To meet the needs of the family, the sleeping area needs careful planning.

Many Indiana rural families prefer three bedrooms. This provides one bedroom for parents, one for boys, and one for girls. Most bedrooms need only one door which should open into a short hallway leading to the bathroom. In a two-story house many rural families like to have one bedroom and at least one-half bath downstairs.

Bedroom size should never be cut below that space necessary for a double bed and necessary passageway between essential pieces of furniture. To provide enough space for necessary furniture and one chair, the floor space should not be less than 100 feet. Somewhat larger rooms are preferable if the family can afford the additional cost.

Location of the windows and doors is also important. Locate doorways near room corners if possible. The well-planned sleeping area will provide one unbroken wall space for the bed. Double bed takes 4 1/2 x 7 feet of floor space in addition to 1 1/2 feet of space to permit bed-making without moving the bed.

To provide good ventilation, windows in two walls are preferred. When that is not possible, two or more windows may be placed on one wall for good air circulation and good daylighting.

Each bedroom in the well-planned sleeping area has at least

one clothes closet which is not less than two feet deep from front to back. This provides space for hanger rod and garments on hangers. Width of closet is determined by the storage needs. Double door or sliding doors make the closet space more usable.

The bedding closet may be located in the hallway connecting the bedroom. A depth of 2 to 2 1/2 feet is suitable for the bedding and linen closet which usually contains adjustable shelves to allow storage of many size and types of articles.

### **Sale Of Berne Store Is Announced Today**

Berne, July 7—Simon Neuen-schwander and Harold Basinger,

both employees of the local Kroger Store, have purchased Roy Strickler's Berne Equity Market. The deal is effective Monday. Strickler, who had owned the store for several years, will devote his full time to Connie's Market and Monroe, which he owns and manages.

### **RULES AGAINST** (Cont. From Page One)

the boards of trustees of the various state correctional institutions. "Ordinary citizens and especially prisoners are required to obey the rules set by law. So is the case," Baker commented on his decision. "If anything, the state government should be overly cautious in maintaining rigid observance of the laws it itself has made."

## **- SPECIAL -** **Table Lamps**

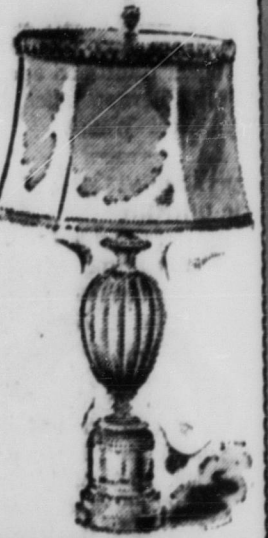
We were able to make a special purchase of these lamps, with 15 inch shades 24 inches high. Attractive china base and indirect lighting feature.

Come early—the supply is limited

**\$2.95**

See This Value On Display In Our Window

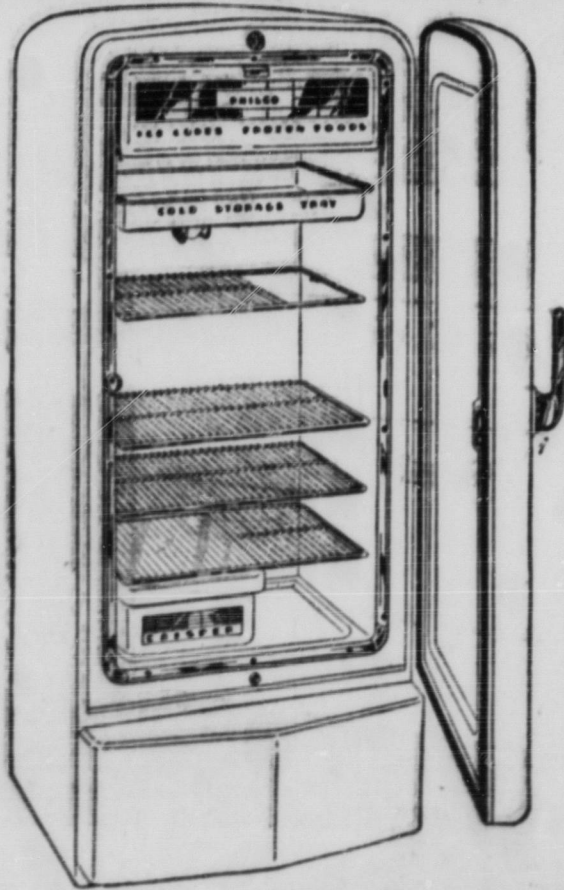
**Sutton's**  
JEWELRY STORE



### **FLAKORN** CORN MUFFIN MIX

Corn muffins, crisp and tender! Delicious with any meal and a pleasant change from bread or rolls. Easy with Flakorn. Just add an egg and milk. Flakorn is precision-mixed, too, for sure results.

## **Sensational New 1949** **PHILCO** **Refrigerator**



**Amazing LOW PRICE**  
**Full 7.2 Cuft. Capacity**  
**Real Luxury Features**

**For Only \$22.95 DOWN**  
Balance in 24 Months

**HAUGKS**



### **NOTICE**

Allis-Chalmers Combine Owners!  
Mount a  
**STRAW CUTTER**  
on your combine now and watch the results.  
**Gerber - Moser Impl.**  
U. S. 27 Phone 2551

### **For Better Snapshots**

Load your camera with Kodak Verichrome Film

then... bring your exposed rolls to us for expert finishing

Stop in today and get Kodak Verichrome Film for your camera—we have all sizes in stock.

**Holthouse Drug Co.**

## **SENSATIONAL CLOSEOUT PURCHASE** and **Sale**

**VICTOR RECORDS**

**BRAND NEW**

**LATEST RELEASES**

**REGULARLY 75c**

**3 FOR 39c**

**-SPECIAL-**

These records are brand new, not used records. We were able to make a fortunate purchase and have passed the bargain on to you. Come early while this bargain lasts.

**Sutton's**  
JEWELRY STORE

### **IF AMBULANCE SERVICE WERE MERE TRANSPORTATION, A TAXI CAB WOULD DO.**

Our cars were designed for easy riding and safety when a little speed is necessary.

We lose no time getting ready—WE ARE READY THE INSTANT WE ARE CALLED.

**GILLIG & DOAN**  
**FUNERAL HOME**  
DECATUR PHONE 794