

Test Your Knowledge
Can you answer seven of these ten questions? Turn to page Four for the answers.

1. In which South American country is Lake Maracaibo?
2. What is the lightest known gas next to hydrogen?
3. What are homonyms?
4. With what sport is the name Raymond (Sonny) Workman associated?
5. On which river is the Shoshone dam?
6. What is the correct pronunciation of the word iterative?
7. Which was the first country that officially recognized the Soviet government?
8. In which city did the Dionne quintuplets meet the King and Queen of England?
9. Name the famous theatre in Milan, Italy.
10. On which ocean does the South American country Peru border?

SPRAGUE'S SPECIALS
For Saturday
SO HOT THEY SIZZLE!

Chrome Kitchen Stools, regular \$2.00 value, now \$1.00 (while they last)
A limited number of End Tables \$1.00
Round Mirrors \$1.00
Living Room Suites \$38.50 up
Studio Couches \$22.50 up
Bed Room Suites \$35.00 up
Dining Room Suites \$59.50 up
Pianos \$185.00 up
Radios \$8.50 up
Laundry Queen Washer \$39.50 up

Big Reduction on every article in the store.
Hugo Gerke

SPRAGUE FURNITURE CO.
152 So. Second St. Phone 199

Another Bank Bandit Sentenced To Prison

Rensselaer, Ind., June 16—(UP)—William Divito, alias Tarzan Williams of Chicago, today began serving a 20-year sentence in the Michigan City state penitentiary on a charge of participation in the robbery of the DeMotte bank December 28, 1937.

He was sentenced in Jasper circuit court yesterday by special Judge Rockwell of Porter county superior court. Thomas Sinks and John Botwinski, both of East Chicago, serving time in the state prison for the same crime, were brought here to testify in the case against Divito.

Stop! Drink!
HOWELL'S
Keg Root Beer
with a
HAMBURGER
Sandwich.

Plenty of other refreshments.
Door trays for curb service.
Plenty of Parking Space.
ADAMS STREET
REFRESHMENT STAND
Pennsylvania R. R. Crossing.

TAX MEASURE NEAR TO VOTE

Bill To House Today Would Junk Undistributed Profits Tax

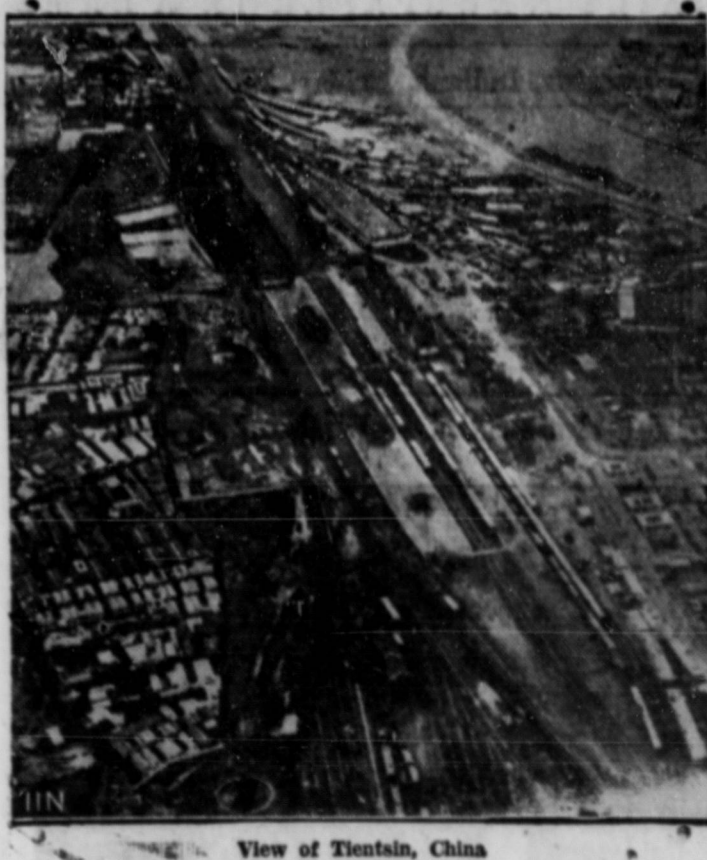
Washington, June 16.—(UP)—The house ways and means committee today sent to the house a bill junking the undistributed profits tax on corporations, while President Roosevelt suggested that congress consider slight revisions in the personal income tax base and rate.

Mr. Roosevelt said at a press conference that he believed the personal income tax base should be broadened somewhat. He did not specify to what levels he favored lowering personal exemptions, now \$2,500 for married men and \$1,000 for single men. He also suggested that personal incomes in the middle bracket be taxed at a rate slightly higher than at present.

Mr. Roosevelt said, however, that he doubted whether congress would act on personal incomes at this charge of participation in the robbery of the DeMotte bank December 28, 1937.

He was sentenced in Jasper circuit court yesterday by special Judge Rockwell of Porter county superior court. Thomas Sinks and John Botwinski, both of East Chicago, serving time in the state prison for the same crime, were brought here to testify in the case against Divito.

New Far East Incident Here



View of Tientsin, China

Here is a view of Tientsin, China, scene of a new far eastern "incident." Japanese troops enforced a blockade of the British and French concessions in Tientsin after failure of a last-minute Japanese proposal to settle a dispute over alleged Chinese terrorists. Japanese military officials were said to be showing a conciliatory spirit.

session, and cautioned against what he termed editorial rot being written on the assumption that broadening of the base would pay off the national debt.

The ways and means committee sent the house its 1940 business tax bill under a speed-up schedule necessitated by imminent expiration of the three-cent postal rate and so-called nuisance taxes on June 30.

Designed to remove business deterrents in the federal tax structure, the measure substitutes a flat 18 per cent income levy on corporations for the controversial undistributed profits tax.

Chairman Robert L. Doughton, D. N. C., planned to call the bill up Monday and have the house pass it in one day if possible. Since it makes virtually no change in estimated total federal revenues and is designed to assist private enterprise, speedy approval was anticipated.

Action is necessary because so-called nuisance taxes and the three-cent postal rate authorization expire automatically on June 30. The bill will re-enact these authorizations to help keep total federal revenues at their current level.

The full committee approved the

NOTICE!
We will be out of our office June 15 to June 22, inclusive.

DR. R. E. DANIELS
DR. EUGENE FIELDS

Kodaks and Brownies
AT NEW LOW PRICES

INCREASE your pride and skill in picture taking this summer. Shoot with a new, modern Kodak or Brownie. You can save on the cost of one of these famous cameras right now, for Eastman has sharply reduced prices on practically all 1939 models. See them here. Let us show you how easily they operate. You'll find better pictures will come your way more often when you swing into action with one of these capable cameras.

Kodak prices start at only \$3.95; Brownies as low as \$1.

Complete line of Films and Kodak supplies.

HOLTHOUSE DRUG CO.

You'll find the Latest in Snapshot equipment here...

WANT-ADS

RATES
One Time—Minimum charge of 25c for 20 words or less. Over 20 words, 1 1/4c per word.
Two Times—Minimum charge of 40c for 20 words or less. Over 20 words 2c per word for the two times.
Three Times—Minimum charge of 50c for 20 words or less. Over 20 words 2 1/2c per word for the three times.
Cards of Thanks ----- 35c
Obituaries and verses ----- \$1.00
Open rate - display advertising 35c per column inch.

FOR SALE
ALWAYS new and USED washers, sweepers, refrigerators, cook stoves, gasoline, coal and wood; small payments. Decatur Hatchery James Kitchen, Salesman. 112-1f

FOR SALE—Anything you want in the nursery line. Riverside Nursery, Berne, Ind. 133-1f

FOR SALE—5 room semi-modern house, garage and large truck patch, Belmont Park. Easy terms, small cash payment, balance same as rent. Immediate possession. Fred Reppert, owner. Phone 610 or 312. 140-13

FOR SALE—Used furniture, rugs and pianos: 3 used living room suites, \$10 to \$20; 4 used pianos, players and straights, \$12.50 to \$125; 1 9x12 Axminster rug, good condition, \$12.50; 1 8.5x10.6 Axminster rug, fair condition, \$5; 1 Remington typewriter, A-1 condition; 1 large safe. We have a basement full of odds and ends. Make us a cash offer on it. All this merchandise was traded in on new and came out of good homes. Sprague Furniture Co., 152 South Second St. Phone 199. 141-3t

FOR SALE—Gas stove, green and ivory enamel. Phone 548. 142-3t

FOR SALE—All modern seven room house. N. Second St. Small down payment. Balance as rent. Suttles-Edwards. Phone 358. Real Estate and Insurance Agts. 141-2t

FOR SALE—One used Deering Mowing Machine in good condition, repaired and ready for use. One Ohio hay loader in good condition. Inquire at Schafer Hardware Co. 142-3t

FOR SALE—Two row corn cultivator, A-1 condition. Hubert Ehrman, one mile north of Pleasant Mills. 141-3t

FOR SALE—CHICKS. BAUM-GARTNER'S Super Quality Blooded Baby Chicks Hatching now. See or write before buying. Priced low. Baumgartner's Hatchery, Route 4, Bluffton, 6 miles west, 9 miles south of Decatur. Craigville phone. 142-3t

FOR SALE—J-Deere binder, 8-ft. cut. Good running order. James Dailey. Phone 864-E. 142-3t

LOST AND FOUND
LOST—Set of valuable keys near Eleventh and Madison streets. Mrs. Weldon Zehr, phone 1074. 1t

Justice Honored

ADAMS COUNTY—PA Project 578 E. (1) (1949)—3.54 miles on State Road 27—1/2 mile south of Decatur to 1/2 mile north of Monmouth. Minimum wage: 75c, 60c, 50c.

On the above, bids are invited on Reinforced Concrete Pavement and Concrete Widening, Bituminous Concrete Pavement and Concrete Widening.

All work is to be done in accordance with the plans and as described in the specifications, supplements and special provisions. Proposals must be made upon standard forms of the State Highway Commission. Plans and proposals may be examined at the office of the State Highway Commission, State House Annex, Indianapolis, or copies thereof will be forwarded upon payment of nominal charges. No refund will be made for plans returned. All Checks For Plans Should be made payable to "Chairman, State Highway Commission of Indiana."

Only contractors who have been pre-qualified in accordance with Chapter 98, Acts of the General Assembly of 1927, will be eligible to submit bids. Proposals for bidding purposes must be requested on form CTS-3 which will be furnished upon request.

Each bidder, with his proposal, shall file a corporate surety bond, payable to the State of Indiana, in the sum of one and one-half (1 1/2) times the amount of his proposal, and such bond shall be only in the form prescribed by law, and shall be executed on the form bound in the proposal. The right is reserved to reject any or all bids or to award on any combination of bids that is most advantageous to the state of Indiana.

State Highway Commission of Indiana, T. A. DUCUS, Chairman, June 9-19

Justice Owen D. Roberts

Among several notables honored at the annual commencement exercises at the University of Pennsylvania in Philadelphia is Justice Owen D. Roberts of the United States supreme court.

bill without revising the draft prepared by its tax subcommittee.

Trade in a Good Town—Decatur.

DR. C. V. CONNELL
VETERINARIAN
Special attention given to diseases of cattle and poultry.
Office & Residence
430 No. Fifth St. Phone 102

N. A. BIXLER
OPTOMETRIST
Eyes Examined - Glasses Fitted
HOURS
8:30 to 11:30 12:30 to 5:00
Saturdays, 8:00 p. m.
Telephone 135

MISCELLANEOUS
FARMERS ATTENTION—Call 870-A at our expense for dead stock removal. The Stadler Products Co. Frank Burger, agent. 13-1t

NOW HATCHING two hatches of Baby Chicks every week, all leading breeds; also Baby Ducklings. Reasonable prices. Model Hatchery, Monroe. 10-1t

NOTICE—Parlor Suites recovered. We recover and repair anything. We buy and sell furniture. Decatur Upholsters, Phone 420. 145 S. Second street. 122-30t

FOR RENT
FOR RENT—2 furnished light-housekeeping rooms. Private entrance on first floor; garage. Phone 511. 810 N. 3rd St. 142-3t

FOR RENT—2, 6-room apts, 1 upper 1 lower, modern. Inquire 713 N. 2nd St. 142-31x

FOR RENT—Rooms for girl or married couple. In modern home. Three blocks from courthouse. Phone 1055. 140-3t

WANTED
WANTED TO RENT—5 room house, not modern, by July 1. Will pay reasonable rent. Phone 553. 142-3t

WANTED—Loans on farms. Eastern money. Low rates. Very liberal terms. See me for abstracts of title. French Quinn. 33-m-w-1

WHOLESALE EGG & POULTRY QUOTATIONS

Corrected June 15
A premium of 1c per doz. to be paid for all clean white eggs.

White eggs, doz.
Brown or mixed eggs, doz.
Heavy hens, per lb.
Leghorn hens, lb.
Heavy broilers, broilers, lb.
Rocks, 3 1/2 lbs. and up.
Heavy broilers, 3 lbs. and up.
Leghorn broilers, 1 1/2 lbs. and up.
Heavy broilers, 1 1/2 lbs. and up.
Leghorn broilers, 1 1/2 lbs. and up.
Pigeons, per doz.

MASONIC
Called meeting of Decatur lodge No. 571 F. & A. M. on the Master Masons degree at 7:30 p. m. Friday. Be present.
A. D. Suttles, W. M. 141-2t

MARKETS AT A GLANCE
Stocks: irregularly higher and quiet.
Bonds: irregularly lower. U. S. governments lower.
Curb stocks: irregularly lower.
Chicago stocks: irregularly lower.
Call money: one per cent.
Foreign exchange: barely steady in relation to dollar.
Cotton: easy.
Grains: wheat easy, off about 1/2 to 3/4 cent. Corn firm, unchanged to up around 1/2 cent.
Chicago livestock: hogs strong; cattle steady, sheep strong.
Rubber: slightly easier.
Silver bar in New York: unchanged at 42 1/2 cents a fine ounce.

NOTICE TO ROAD CONTRACTORS
Notice is hereby given that sealed proposals for the construction of certain highways described as follows, will be received by the Chairman of the State Highway Commission at his office in the State House Annex, Indianapolis, until 10 A. M. Central Standard Time, on the 29th day of June, 1939, when all proposals will be publicly opened and read.

The following projects are to be constructed in accordance with the Federal Highway Act. Special provisions relative to "Selection of Labor," "Wages, Hours of Employment and Conditions of Employment," and "Methods of Performing Work" are contained in each proposal and shall govern on this work.

The attention of bidders is directed to the special provisions covering subletting or assigning the contract and to the use of domestic materials.

The minimum wage paid to all skilled labor, labor intermediate grade and common labor, shall be as indicated for the county in which the work is to be performed.

ADAMS COUNTY—PA Project 578 E. (1) (1949)—3.54 miles on State Road 27—1/2 mile south of Decatur to 1/2 mile north of Monmouth. Minimum wage: 75c, 60c, 50c.

On the above, bids are invited on Reinforced Concrete Pavement and Concrete Widening, Bituminous Concrete Pavement and Concrete Widening.

All work is to be done in accordance with the plans and as described in the specifications, supplements and special provisions. Proposals must be made upon standard forms of the State Highway Commission. Plans and proposals may be examined at the office of the State Highway Commission, State House Annex, Indianapolis, or copies thereof will be forwarded upon payment of nominal charges. No refund will be made for plans returned. All Checks For Plans Should be made payable to "Chairman, State Highway Commission of Indiana."

Only contractors who have been pre-qualified in accordance with Chapter 98, Acts of the General Assembly of 1927, will be eligible to submit bids. Proposals for bidding purposes must be requested on form CTS-3 which will be furnished upon request.

Each bidder, with his proposal, shall file a corporate surety bond, payable to the State of Indiana, in the sum of one and one-half (1 1/2) times the amount of his proposal, and such bond shall be only in the form prescribed by law, and shall be executed on the form bound in the proposal. The right is reserved to reject any or all bids or to award on any combination of bids that is most advantageous to the state of Indiana.

State Highway Commission of Indiana, T. A. DUCUS, Chairman, June 9-19

CHICAGO GRAIN CLOSURE

July 1939
Wheat 72 1/2
Corn 49 1/2
Oats 35 1/2

Fort Wayne Livestock
Livestock: Hogs: steady; 160-200 lbs. \$5.25-\$5.50; 200-250 lbs. \$5.00-\$5.25; 250-300 lbs. \$4.75-\$5.00; 300-350 lbs. \$4.50-\$4.75; 350-400 lbs. \$4.25-\$4.50; 400-450 lbs. \$4.00-\$4.25; 450-500 lbs. \$3.75-\$4.00; 500-550 lbs. \$3.50-\$3.75; 550-600 lbs. \$3.25-\$3.50; 600-650 lbs. \$3.00-\$3.25; 650-700 lbs. \$2.75-\$3.00; 700-750 lbs. \$2.50-\$2.75; 750-800 lbs. \$2.25-\$2.50; 800-850 lbs. \$2.00-\$2.25; 850-900 lbs. \$1.75-\$2.00; 900-950 lbs. \$1.50-\$1.75; 950-1000 lbs. \$1.25-\$1.50; 1000-1050 lbs. \$1.00-\$1.25; 1050-1100 lbs. \$0.75-\$1.00; 1100-1150 lbs. \$0.50-\$0.75; 1150-1200 lbs. \$0.25-\$0.50; 1200-1250 lbs. \$0.00-\$0.25; 1250-1300 lbs. \$0.00-\$0.25; 1300-1350 lbs. \$0.00-\$0.25; 1350-1400 lbs. \$0.00-\$0.25; 1400-1450 lbs. \$0.00-\$0.25; 1450-1500 lbs. \$0.00-\$0.25; 1500-1550 lbs. \$0.00-\$0.25; 1550-1600 lbs. \$0.00-\$0.25; 1600-1650 lbs. \$0.00-\$0.25; 1650-1700 lbs. \$0.00-\$0.25; 1700-1750 lbs. \$0.00-\$0.25; 1750-1800 lbs. \$0.00-\$0.25; 1800-1850 lbs. \$0.00-\$0.25; 1850-1900 lbs. \$0.00-\$0.25; 1900-1950 lbs. \$0.00-\$0.25; 1950-2000 lbs. \$0.00-\$0.25; 2000-2050 lbs. \$0.00-\$0.25; 2050-2100 lbs. \$0.00-\$0.25; 2100-2150 lbs. \$0.00-\$0.25; 2150-2200 lbs. \$0.00-\$0.25; 2200-2250 lbs. \$0.00-\$0.25; 2250-2300 lbs. \$0.00-\$0.25; 2300-2350 lbs. \$0.00-\$0.25; 2350-2400 lbs. \$0.00-\$0.25; 2400-2450 lbs. \$0.00-\$0.25; 2450-2500 lbs. \$0.00-\$0.25; 2500-2550 lbs. \$0.00-\$0.25; 2550-2600 lbs. \$0.00-\$0.25; 2600-2650 lbs. \$0.00-\$0.25; 2650-2700 lbs. \$0.00-\$0.25; 2700-2750 lbs. \$0.00-\$0.25; 2750-2800 lbs. \$0.00-\$0.25; 2800-2850 lbs. \$0.00-\$0.25; 2850-2900 lbs. \$0.00-\$0.25; 2900-2950 lbs. \$0.00-\$0.25; 2950-3000 lbs. \$0.00-\$0.25; 3000-3050 lbs. \$0.00-\$0.25; 3050-3100 lbs. \$0.00-\$0.25; 3100-3150 lbs. \$0.00-\$0.25; 3150-3200 lbs. \$0.00-\$0.25; 3200-3250 lbs. \$0.00-\$0.25; 3250-3300 lbs. \$0.00-\$0.25; 3300-3350 lbs. \$0.00-\$0.25; 3350-3400 lbs. \$0.00-\$0.25; 3400-3450 lbs. \$0.00-\$0.25; 3450-3500 lbs. \$0.00-\$0.25; 3500-3550 lbs. \$0.00-\$0.25; 3550-3600 lbs. \$0.00-\$0.25; 3600-3650 lbs. \$0.00-\$0.25; 3650-3700 lbs. \$0.00-\$0.25; 3700-3750 lbs. \$0.00-\$0.25; 3750-3800 lbs. \$0.00-\$0.25; 3800-3850 lbs. \$0.00-\$0.25; 3850-3900 lbs. \$0.00-\$0.25; 3900-3950 lbs. \$0.00-\$0.25; 3950-4000 lbs. \$0.00-\$0.25; 4000-4050 lbs. \$0.00-\$0.25; 4050-4100 lbs. \$0.00-\$0.25; 4100-4150 lbs. \$0.00-\$0.25; 4150-4200 lbs. \$0.00-\$0.25; 4200-4250 lbs. \$0.00-\$0.25; 4250-4300 lbs. \$0.00-\$0.25; 4300-4350 lbs. \$0.00-\$0.25; 4350-4400 lbs. \$0.00-\$0.25; 4400-4450 lbs. \$0.00-\$0.25; 4450-4500 lbs. \$0.00-\$0.25; 4500-4550 lbs. \$0.00-\$0.25; 4550-4600 lbs. \$0.00-\$0.25; 4600-4650 lbs. \$0.00-\$0.25; 4650-4700 lbs. \$0.00-\$0.25; 4700-4750 lbs. \$0.00-\$0.25; 4750-4800 lbs. \$0.00-\$0.25; 4800-4850 lbs. \$0.00-\$0.25; 4850-4900 lbs. \$0.00-\$0.25; 4900-4950 lbs. \$0.00-\$0.25; 4950-5000 lbs. \$0.00-\$0.25; 5000-5050 lbs. \$0.00-\$0.25; 5050-5100 lbs. \$0.00-\$0.25; 5100-5150 lbs. \$0.00-\$0.25; 5150-5200 lbs. \$0.00-\$0.25; 5200-5250 lbs. \$0.00-\$0.25; 5250-5300 lbs. \$0.00-\$0.25; 5300-5350 lbs. \$0.00-\$0.25; 5350-5400 lbs. \$0.00-\$0.25; 5400-5450 lbs. \$0.00-\$0.25; 5450-5500 lbs. \$0.00-\$0.25; 5500-5550 lbs. \$0.00-\$0.25; 5550-5600 lbs. \$0.00-\$0.25; 5600-5650 lbs. \$0.00-\$0.25; 5650-5700 lbs. \$0.00-\$0.25; 5700-5750 lbs. \$0.00-\$0.25; 5750-5800 lbs. \$0.00-\$0.25; 5800-5850 lbs. \$0.00-\$0.25; 5850-5900 lbs. \$0.00-\$0.25; 5900-5950 lbs. \$0.00-\$0.25; 5950-6000 lbs. \$0.00-\$0.25; 6000-6050 lbs. \$0.00-\$0.25; 6050-6100 lbs. \$0.00-\$0.25; 6100-6150 lbs. \$0.00-\$0.25; 6150-6200 lbs. \$0.00-\$0.25; 6200-6250 lbs. \$0.00-\$0.25; 6250-6300 lbs. \$0.00-\$0.25; 6300-6350 lbs. \$0.00-\$0.25; 6350-6400 lbs. \$0.00-\$0.25; 6400-6450 lbs. \$0.00-\$0.25; 6450-6500 lbs. \$0.00-\$0.25; 6500-6550 lbs. \$0.00-\$0.25; 6550-6600 lbs. \$0.00-\$0.25; 6600-6650 lbs. \$0.00-\$0.25; 6650-6700 lbs. \$0.00-\$0.25; 6700-6750 lbs. \$0.00-\$0.25; 6750-6800 lbs. \$0.00-\$0.25; 6800-6850 lbs. \$0.00-\$0.25; 6850-6900 lbs. \$0.00-\$0.25; 6900-6950 lbs. \$0.00-\$0.25; 6950-7000 lbs. \$0.00-\$0.25; 7000-7050 lbs. \$0.00-\$0.25; 7050-7100 lbs. \$0.00-\$0.25; 7100-7150 lbs. \$0.00-\$0.25; 7150-7200 lbs. \$0.00-\$0.25; 7200-7250 lbs. \$0.00-\$0.25; 7250-7300 lbs. \$0.00-\$0.25; 7300-7350 lbs. \$0.00-\$0.25; 7350-7400 lbs. \$0.00-\$0.25; 7400-7450 lbs. \$0.00-\$0.25; 7450-7500 lbs. \$0.00-\$0.25; 7500-7550 lbs. \$0.00-\$0.25; 7550-7600 lbs. \$0.00-\$0.25; 7600-7650 lbs. \$0.00-\$0.25; 7650-7700 lbs. \$0.00-\$0.25; 7700-7750 lbs. \$0.00-\$0.25; 7750-7800 lbs. \$0.00-\$0.25; 7800-7850 lbs. \$0.00-\$0.25; 7850-7900 lbs. \$0.00-\$0.25; 7900-7950 lbs. \$0.00-\$0.25; 7950-8000 lbs. \$0.00-\$0.25; 8000-8050 lbs. \$0.00-\$0.25; 8050-8100 lbs. \$0.00-\$0.25; 8100-8150 lbs. \$0.00-\$0.25; 8150-8200 lbs. \$0.00-\$0.25; 8200-8250 lbs. \$0.00-\$0.25; 8250-8300 lbs. \$0.00-\$0.25; 8300-8350 lbs. \$0.00-\$0.25; 8350-8400 lbs. \$0.00-\$0.25; 8400-8450 lbs. \$0.00-\$0.25; 8450-8500 lbs. \$0.00-\$0.25; 8500-8550 lbs. \$0.00-\$0.25; 8550-8600 lbs. \$0.00-\$0.25; 8600-8650 lbs. \$0.00-\$0.25; 8650-8700 lbs. \$0.00-\$0.25; 8700-8750 lbs. \$0.00-\$0.25; 8750-8800 lbs. \$0.00-\$0.25; 8800-8850 lbs. \$0.00-\$0.25; 8850-8900 lbs. \$0.00-\$0.25; 8900-8950 lbs. \$0.00-\$0.25; 8950-9000 lbs. \$0.00-\$0.25; 9000-9050 lbs. \$0.00-\$0.25; 9050-9100 lbs. \$0.00-\$0.25; 9100-9150 lbs. \$0.00-\$0.25; 9150-9200 lbs. \$0.00-\$0.25; 9200-9250 lbs. \$0.00-\$0.25; 9250-9300 lbs. \$0.00-\$0.25; 9300-9350 lbs. \$0.00-\$0.25; 9350-9400 lbs. \$0.00-\$0.25; 9400-9450 lbs. \$0.00-\$0.25; 9450-9500 lbs. \$0.00-\$0.25; 9500-9550 lbs. \$0.00-\$0.25; 9550-9600 lbs. \$0.00-\$0.25; 9600-9650 lbs. \$0.00-\$0.25; 9650-9700 lbs. \$0.00-\$0.25; 9700-9750 lbs. \$0.00-\$0.25; 9750-9800 lbs. \$0.00-\$0.25; 9800-9850 lbs. \$0.00-\$0.25; 9850-9900 lbs. \$0.00-\$0.25; 9900-9950 lbs. \$0.00-\$0.25; 9950-10000 lbs. \$0.00-\$0.25; 10000-10050 lbs. \$0.00-\$0.25; 10050-10100 lbs. \$0.00-\$0.25; 10100-10150 lbs. \$0.00-\$0.25; 10150-10200 lbs. \$0.00-\$0.25; 10200-10250 lbs. \$0.00-\$0.25; 10250-10300 lbs. \$0.00-\$0.25; 10300-10350 lbs. \$0.00-\$0.25; 10350-10400 lbs. \$0.00-\$0.25; 10400-10450 lbs. \$0.00-\$0.25; 10450-10500 lbs. \$0.00-\$0.25; 10500-10550 lbs. \$0.00-\$0.25; 10550-10600 lbs. \$0.00-\$0.25; 10600-10650 lbs. \$0.00-\$0.25; 10650-10700 lbs. \$0.00-\$0.25; 10700-10750 lbs. \$0.00-\$0.25; 10750-10800 lbs. \$0.00-\$0.25; 10800-10850 lbs. \$0.00-\$0.25; 10850-10900 lbs. \$0.00-\$0.25; 10900-10950 lbs. \$0.00-\$0.25; 10950-11000 lbs. \$0.00-\$0.25; 11000-11050 lbs. \$0.00-\$0.25; 11050-11100 lbs. \$0.00-\$0.25; 11100-11150 lbs. \$0.00-\$0.25; 11150-11200 lbs. \$0.00-\$0.25; 11200-11250 lbs. \$0.00-\$0.25; 11250-11300 lbs. \$0.00-\$0.25; 11300-11350 lbs. \$0.00-\$0.25; 11350-11400 lbs. \$0.00-\$0.25; 11400-11450 lbs. \$0.00-\$0.25; 11450-11500 lbs. \$0.00-\$0.25; 11500-11550 lbs. \$0.00-\$0.25; 11550-11600 lbs. \$0.00-\$0.25; 11600-11650 lbs. \$0.00-\$0.25; 11650-11700 lbs. \$0.00-\$0.25; 11700-11750 lbs. \$0.00-\$0.25; 11750-11800 lbs. \$0.00-\$0.25; 11800-11850 lbs. \$0.00-\$0.25; 11850-11900 lbs. \$0.00-\$0.25; 11900-11950 lbs. \$0.00-\$0.25; 11950-12000 lbs. \$0.00-\$0.25; 12000-12050 lbs. \$0.00-\$0.25; 12050-12100 lbs. \$0.00-\$0.25; 12100-12150 lbs. \$0.00-\$0.25; 12150-12200 lbs. \$0.00-\$0.25; 12200-12250 lbs. \$0.00-\$0.25; 12250-12300 lbs. \$0.00-\$0.25; 12300-12350 lbs. \$0.00-\$0.25; 12350-12400 lbs. \$0.00-\$0.25; 12400-12450 lbs. \$0.00-\$0.25; 12450-12500 lbs. \$0.00-\$0.25; 12500-12550 lbs. \$0.00-\$0.25; 12550-12600 lbs. \$0.00-\$0.25; 12600-12650 lbs. \$0.00-\$0.25; 12650-12700 lbs. \$0.00-\$0.25; 12700-12750 lbs. \$0.00-\$0.25; 12750-12800 lbs. \$0.00-\$0.25; 12800-12850 lbs. \$0.00-\$0.25; 12850-12900 lbs. \$0.00-\$0.25; 12900-12950 lbs. \$0.00-\$0.25; 12950-13000 lbs. \$0.00-\$0.25; 13000-13050 lbs. \$0.00-\$0.25; 13050-13100 lbs. \$0.00-\$0.25; 13100-13150 lbs. \$0.00-\$0.25; 13150-13200 lbs. \$0.00-\$0.25; 13200-13250 lbs. \$0.00-\$0.25; 13250-13300 lbs. \$0.00-\$0.25; 13300-13350 lbs. \$0.00-\$0.25; 13350-13400 lbs. \$0.00-\$0.25; 13400-13450 lbs. \$0.00-\$0.25; 13450-13500 lbs. \$0.00-\$0.25; 13500-13550 lbs. \$0.00-\$0.25; 13550-13600 lbs. \$0.00-\$0.25; 13600-13650 lbs. \$0.00-\$0.25; 13650-13700 lbs. \$0.00-\$0.25; 13700-13750 lbs. \$0.00-\$0.25; 13750-13800 lbs. \$0.00-\$0.25; 13800-13850 lbs. \$0.00-\$0.25; 13850-13900 lbs. \$0.00-\$0.25; 13900-13950 lbs. \$0.00-\$0.25; 13950-14000 lbs. \$0.00-\$0.25; 14000-14050 lbs. \$0.00-\$0.25; 14050-14100 lbs. \$0.00-\$0.25; 14100-14150 lbs. \$0.00-\$0.25; 14150-14200 lbs. \$0.00-\$0.25; 14200-14250 lbs. \$0.00-\$0.25; 14250-14300 lbs. \$0.00-\$0.25; 14300-14350 lbs. \$0.00-\$0.25; 14350-14400 lbs. \$0.00-\$0.25; 14400-14450 lbs. \$0.00-\$0