



## LEASING FARM REQUIRES MUCH GOOD THOUGHT

Experts Suggest Written  
Contracts Be Signed  
By Parties

Urbana, Ill., Sept. 9 — With September 1 considered notification date in farm tenant circles, this week will find many landlords and tenants going over terms of their leases to see if they are fair to all concerned, it is pointed out by Joseph Ackerman, associate in farm management, College of Agriculture, University of Illinois.

"Provisions of a lease must make possible the adoption of farming practices which will provide a good income to both parties," Ackerman said. He listed the following points to be considered in leasing a farm:

1. It is best to have the lease written. This provides for a care-

ful consideration of the responsibilities of the two parties.

2. Adequate provisions for soil conservation and improvement are essential points of a good farm lease.

### Early Notification

3. If the tenant has demonstrated that he is a good farmer, it is well to have the lease worded so that it will continue from year to year unless notification is given of its termination. Such notification should be given at least six months before the close of the year and preferably at an even earlier date.

4. It is to the tenant's advantage to see that the lease contains provisions to reimburse him for improvement work performed by him for which he has not realized the value when he moves from the farm.

5. It is also to the tenant's advantage for the lease to provide for reimbursement of the tenant should he be required to move from the farm without adequate notification.

6. For the landlord's protection, a provision should be included calling for payment for the abuse of property by the tenant.

### Provide Arbitration

7. It is well to see that the lease

contains a clause which states that in event of differences of opinion between the landlord and tenant such differences be settled by an arbitration committee selected by the two parties or by parties named by them to select such a committee.

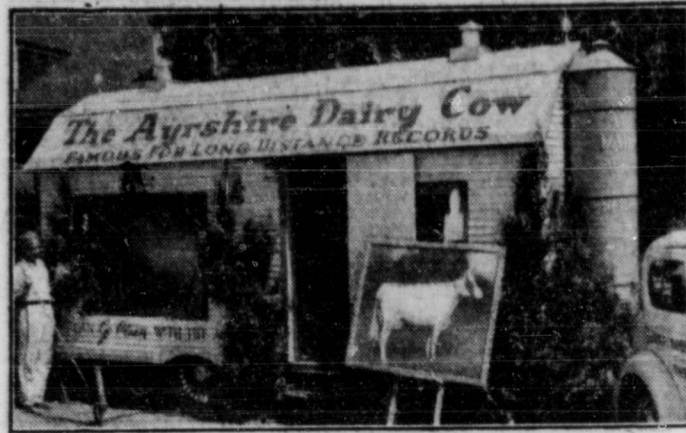
8. The stated amount to be paid for cash rent should be adjusted to a sliding basis which takes into consideration marked changes in prices of farm products and variations in production owing to conditions not under the tenant's control. On farms where the income is mainly from one enterprise, it might be fair to base the cash rent on the value of a stipulated amount of product. On a diversified farm a better plan is to include several of the products produced.

### Equitable Distribution

9. At the time of leasing a careful examination of the contributions of landlord and tenant is in order to make certain the lease provides for an equitable distribution of the receipts and expenses. Too frequently the division is based on the custom of the community.

"A division that is fair for one farm may not be fair for the adjoining farm," Ackerman said.

## Prize Cow Fair Visitor in Land Yacht



The palace car in which White Mamie, champion Ayrshire cow, owned by Robert L. Knight of Providence, Rhode Island, is making an 8,000 mile tour of leading state fairs, and is visiting the Indiana State Fair this week.

## SWINE POINTERS ARE DESCRIBED

Suggests Dividing Uneven Litters Or Hand Feedings

Swine breeders should use every precaution to save all pigs farrowed this fall, states L. A. Richardson, University of Tennessee Extension animal husbandman, in giving pointers on the care of orphan pigs resulting from large litters.

When a sow or gilt has a litter in excess of the number of teats, it is well to try to even up this number of transferring some of the pigs to another sow if a second sow has farrowed at approximately the same time and has a smaller litter or is short in number of pigs, he says. This may be done by removing the sow from her litter and keeping her away something like 20 to 30 minutes. In the meantime, the orphan or unclaimed pigs can be put with her litter in order that they may mingle together. Some hog men sprinkle the pigs with a weak solution of one of the coal tar dips. This has a tendency to destroy identification by smell on the part of the sow.

If a second sow is not available to which pigs may be transferred, it is best to feed the pigs cow's whole sweet milk. This may be heated to the approximate temperature of milk and the pigs should be fed a minimum of five or six times daily until they are three or four weeks old. At first, this had best be done by a bottle, fed with nipple, until the pigs get two to three weeks old or until they

"Landlords and tenants will do well to take a broad point of view when analyzing the fairness of a lease. Tenancy problems are those of human relationships. If the lease is an equitable working agreement, both parties will be satisfied and each will receive a maximum return."

A more complete discussion of farm leases is contained in Circular No. 474, "Farm Leases for Illinois," which may be obtained by writing the College of Agriculture at Urbana, Ill.

learn to drink. Young pigs nurse every 60 to 90 minutes. This holds true of night nursing as well as nursing in the day time. Pigs ordinarily will consume from 0.18 to 0.65 pounds of milk daily. Grain feeding should be started as soon as the pigs are large enough to begin to notice things and pick at leaves or blades of grass.

Sows or gilts which do not nurse and develop their pigs satisfactorily should be eliminated from the herd, Mr. Richardson advises.

## HORSE SENSE

Cutting corn silage into one-half inch lengths requires 15 to 30 per cent less horse-powers of energy a ton than cutting into one-fourth inch lengths, it is explained in "Filling Illinois Silos," a 10-page mimeographed publication of the College of Agriculture, University of Illinois. At present one-fourth and three-eighth inch cuts are used only when these shorter lengths will improve the packing of very dry corn.

"Farm Practices and Their Effects on Farm Earnings," is the title of a 130-page bulletin which has just been published by the College of Agriculture, University of Illinois, Urbana, Ill. The bulletin, No. 444, evaluates some of the specific practices followed on more than 1,000 Illinois farms. Copies are available upon request from the College of Agriculture, at Urbana.

To pool the best and most recent knowledge concerning the various aspects of the poultry industry, in all parts of the world is one of the objectives of the Seventh World's Poultry Congress to be held at Cleveland, O., July 28 to August 7, 1939.

Soybeans have a soil-improving value comparable to red clover when soybeans are used as a green manure crop, says J. C. Hackleman, crop extension specialist,

## SMALL NEED TO FEAR GREATLY HORSE DISEASE

Sleeping Sickness Is Prevented By Insect Protection

Urbana, Ill., Sept. 9 — Despite the appearance of so-called sleeping sickness of horses in various parts of the country, there is no need for farmers to become unduly alarmed or to feel that all horses will become affected. Losses can easily be held down, according to staff members of the division of animal pathology and hygiene, College of Agriculture, University of Illinois.

On an average, fully eight out of every 10 affected horses will recover if the disease is recognized early and veterinary treatment is started promptly, it is explained. Furthermore if no attempts are made to prevent or control the disease, at least 80 or 90 percent of all horses will probably escape.

### Disease Preventable

With the coming of frost, the danger to horses and mules from the disease will promptly subside this year. Staff members explain that it is unwise for horse owners to consider selling all their horses and mules at a loss because of fear of the disease, for it is preventable.

Since indications point to mosquitoes and biting flies as possible carriers of the disease, preventive measures consist in large part in protecting animals from these insects. Hauling manure from barns and lots and spreading it lightly on fields not used for breeding places of flies.

Sprinkling kerosene or oil on ponds will aid in the control of mosquitoes. It is also advisable to clean water tanks and add small amounts of copper sulphate.

### Fly Sprays

To help keep flies off horses at work, commercial sprays as well as fly nets and muslin covers are frequently used. For horses on pasture, the College of Agriculture uses and recommends a mixture composed of 100 parts cold pressed fish oil, 50 parts oil of tar from pine trees and one part carbolic acid. The mixture is applied lightly and thoroughly with paint brush twice weekly. It is not suitable for horses at work.

In localities where the disease prevails, valuable horses may be vaccinated. However, results of vaccination during an outbreak may not be as satisfactory as vaccination 30 days preceding outbreak.

Sleeping sickness may be mistaken for heat stroke, digestive disturbance, injury from lightning, colic, so-called constalk disease, bacterial infections of the brain or poisoning. If symptoms such as loss of appetite and sluggishness, stiff, slow, unsteady movement, grinding of teeth and drooping of ears or lips are noted, it is well to consult a veterinarian promptly. A copy of a mimeographed leaflet containing suggestions for the control and prevention of so-called sleeping sickness of horses and mules may be obtained by writing the College of Agriculture at Urbana.

College of Agriculture, University of Illinois.

You can't hope to be a record farmer unless you keep records. Just like a watch without hands won't tell the time of day, a farmer without records doesn't know where he gets his pay.

High yields make for low production costs. Legumes, green manure crops, lime, phosphate and other practices for which ACP payments are made help boost yields.

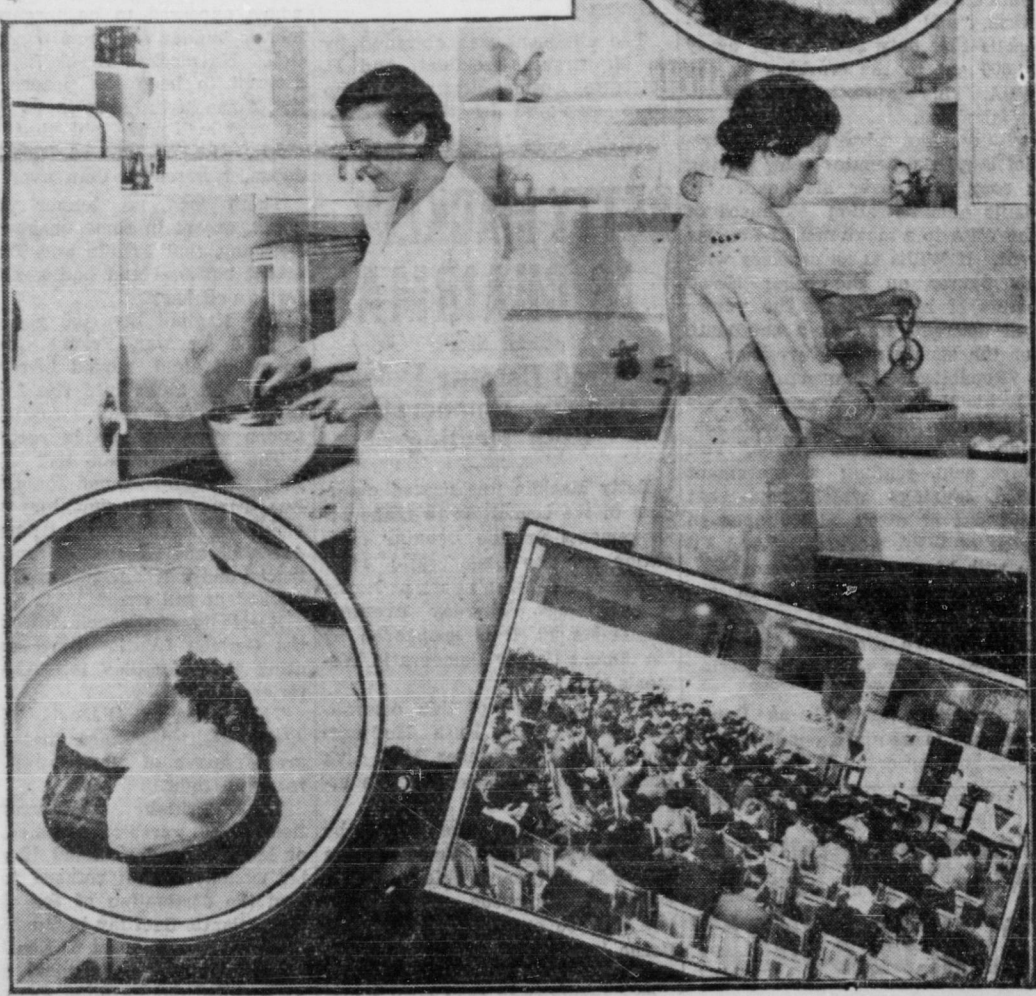
Cult sweet potatoes are good hog feed and five bushels are equal to one bushel of corn. They may also be substituted for a part of the grain in feeding cattle and sheep.

Turkeys spend most of their time from 11:00 A. M. to 2:00 P. M. in the shade. It's a good idea to place a few feed hoppers and watering troughs at these spots so the birds will take more feed. Uncontrolled water takes more plant food out of the soil than crops. Erosion and leaching accounts for 43.7 percent of the annual loss of nitrogen, 51.7 percent of the phosphorus and 94.5 percent of the calcium.

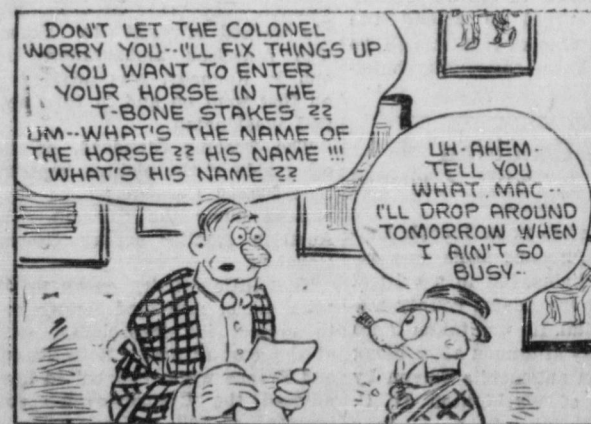
500 Sheets 8 1/2 x 11, 20-lb. White Automatic Mimeograph Bond \$1.05. 500 Sheets 8 1/2 x 11, 16-lb. Special Mimeograph, White 35c. The Decatur Democrat Co.

## NEW RECIPES DEMONSTRATED At World's Poultry Congress

Demonstrations and lectures on how to best use poultry products successfully in the diet will be stressed at The World's Poultry Congress, Cleveland, July 28 to August 7, 1939. Although it may be news to some people, the egg is almost a perfect food. How to use it best will be carefully brought out. The proper preparation and serving of poultry meats of all kinds will be another feature of the Congress program. Everyone who attends will have the opportunity to secure new recipes and will see these recipes demonstrated. There will be something for everyone at the Congress including the housewife.



## BARNEY GOOGLE



## SNUFFY HAS A NAME FOR THE HORSE



## THIMBLE THEATER



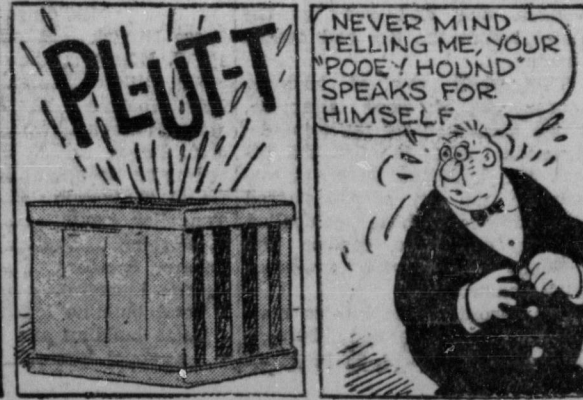
## SHOWING--"ITS BARK IS WORSE THAN ITS BITE"



## By Billy DeBeck



## By SEGAR



## WANT-AD

**RATES**  
One Time--Minimum charge of 25c for 20 words or less. Over 20 words, 1/4c per word.  
Two Times--Minimum charge of 40c for 20 words or less. Over 20 words 2c per word for the two times.  
Three Times--Minimum charge of 50c for 20 words or less. Over 20 words 2 1/2c per word for the three times.  
Cards of Thanks..... 35c  
Obituaries and verses..... \$1.00  
Open rate display advertising 35c per column inch.

**FOR SALE**  
FOR SALE--Ideal electric fences. Prices installed. 6 volt battery model, \$15.50; 110 volt A. C. model, \$12.50. Guaranteed results. Call or write E. M. Rice, Dist. Agent, 418 E. Water St., Berne, Ind. Phone 389. 211-61x

**FOR SALE**  
FOR SALE--Fur Coat, size 14. good condition. Phone 764. 212-31x  
FOR SALE--Tomatoes, 50c bushel. Also taking orders for next week. We deliver. Phone 483. 213-31x  
FOR SALE--10-gallon Coco Cola kegs; also 1 gallon glass jars. Staley's Confectionery.

**FOR SALE**  
FOR SALE--Concrete block machine. Pete Lemish, care Chevrolet garage or 220 N. 13th St. 1tx  
FOR SALE--300 bushels of corn. William Mitchell, mile and half east Monroe. 214-21x  
FOR SALE--Used Pianos. Large number of used pianos, selling from \$20 to \$60. Sprague Furniture Co., 152 South Second St., Decatur, Indiana. 213-21

**FOR RENT**  
FOR RENT--Sleeping porch, modern home. 315 N. Phone 783.

**FOR RENT**  
FOR RENT--Modern home, ing furnace, toilet, bath, electricity, large eastern centrally located. Possession. Phone 43.

**FOR RENT**  
FOR RENT--Five room apartment on South 1st. Call Dyonis Schmitt. Phone 145.

**FOR RENT**  
FOR RENT--Four or five room apartment, all modern. floor. Call at 227 N. Fourth.

**FOR RENT**  
FOR RENT--4-room apartment. Indiana street. Call 5478. Thieme, 7 mi. n.e. of Decatur.

**FOR RENT**  
FOR RENT--Modern 1 1/2 house at 445 Mercer Ave. V. Mills, phone 383.

**FOR RENT**  
FOR RENT--Strictly modern four blocks from business district. Also modern home. N. Third St. Inquire 42 St. Phone 145.

**LOST AND FOUND**  
LOST--Red Scofield Bible, corner Avenue Wednesday, Leonard Soliday, 738 Monroe, n.e. Reward.

**MARKET REPORT**  
DAILY REPORT OF LOCAL AND FOREIGN MARKETS  
Brady's Market for Decatur, Craigville, Hoagland and W. Closed at 12 Noon  
Corrected September 9

No commission and no tax. Veals received every day.

100 to 120 lbs.  
120 to 140 lbs.  
140 to 160 lbs.  
160 to 180 lbs.  
180 to 200 lbs.  
200 to 250 lbs.  
250 to 275 lbs.  
275 to 300 lbs.  
300 to 350 lbs.  
350 lbs., and up  
Roughs  
Stags  
Vealers  
Spring lambs  
Spring buck lambs  
Yearlings

EAST BUFFALO LIVESTOCK  
East Buffalo, N. Y., Sept. 9 (U.P.)--Livestock: Hogs, none; desirables, \$9.65; cattle, 125; steers good choice, \$10.25-\$11. Vealers, \$11.50-\$12.00. Sheep, none; lambs, 25c for the week; top, \$9.50.

LOCAL GRAIN MARKET  
Corrected September 9  
Prices to be paid tomorrow

No. 1 Wheat, 60 lbs. or better  
No. 2 Wheat, etc.  
New No. 2 Oats  
No. 2 Yellow Corn  
No. 2 Soy Beans  
Rye

CENTRAL SOYA CO.  
No. 2 Soy Beans

CHANGE OF ADDRESS  
Subscribers are requested to give old and address when order paper changed from address to another.

For example: If change your address from Decatur R. R. 2, Decatur R. R. 2, to us to change the paper from route one to route two.

500 Sheets 8 1/2 x 11, 20-lb. White Automatic Mimeograph Bond \$1.05. 500 Sheets 8 1/2 x 11, 16-lb. Special Mimeograph, White 35c. The Decatur Democrat Co.

500 Sheets 8 1/2 x 11, 20-lb. White Automatic Mimeograph Bond \$1.05. 500 Sheets 8 1/2 x 11, 16-lb. Special Mimeograph, White 35c. The Decatur Democrat Co.

500 Sheets 8 1/2 x 11, 20-lb. White Automatic Mimeograph Bond \$1.05. 500 Sheets 8 1/2 x 11, 16-lb. Special Mimeograph, White 35c. The Decatur Democrat Co.

500 Sheets 8 1/2 x 11, 20-lb. White Automatic Mimeograph Bond \$1.05. 500 Sheets 8 1/2 x 11, 16-lb. Special Mimeograph, White 35c. The Decatur Democrat Co.

500 Sheets 8 1/2 x 11, 20-lb. White Automatic Mimeograph Bond \$1.05. 500 Sheets 8 1/2 x 11, 16-lb. Special Mimeograph, White 35c. The Decatur Democrat Co.

500 Sheets 8 1/2 x 11, 20-lb. White Automatic Mimeograph Bond \$1.05. 500 Sheets 8 1/2 x 11, 16-lb. Special Mimeograph, White 35c. The Decatur Democrat Co.

500 Sheets 8 1/2 x 11, 20-lb. White Automatic Mimeograph Bond \$1.05. 500 Sheets 8 1/2 x 11, 16-lb. Special Mimeograph, White 35c. The Decatur Democrat Co.

500 Sheets 8 1/2 x 11, 20-lb. White Automatic Mimeograph Bond \$1.05. 500 Sheets 8 1/2 x 11, 16-lb. Special Mimeograph, White 35c. The Decatur Democrat Co.

500 Sheets 8 1/2 x 11, 20-lb. White Automatic Mimeograph Bond \$1.05. 500 Sheets 8 1/2 x 11, 16-lb. Special Mimeograph, White 35c. The Decatur Democrat Co.

500 Sheets 8 1/2 x 11, 20-lb. White Automatic Mimeograph Bond \$1.05. 500 Sheets 8 1/2 x 11, 16-lb. Special Mimeograph, White 35c. The Decatur Democrat Co.

500 Sheets 8 1/2 x 11, 20-lb. White Automatic Mimeograph Bond \$1.05. 500 Sheets 8 1/2 x 11, 16-lb. Special Mimeograph, White 35c. The Decatur Democrat Co.

500 Sheets 8 1/2 x 11, 20-lb. White Automatic Mimeograph Bond \$1.05. 500 Sheets 8 1/2 x 11, 16-lb. Special Mimeograph, White 35c. The Decatur Democrat Co.