

RURAL CHURCHES

Decatur Circuit Methodist Episcopal Church
Edgar L. Johnston, pastor
Mt. Pleasant
Sunday School, 9:30. J. E. Angier, superintendent.
Bible Class meets Wednesday at 7:30 p.m. with Mr. and Mrs. Francis Fuhrman and family.
Beulah
Sunday school 9:30. Otto Dill, superintendent.
Evening service on account of arrival at Pleasant Valley. You are invited to come there for service.
Washington
Sunday school, 9:30. Grant Hays, superintendent.
Preaching service 10:30. Sermon by pastor.
Pleasant Valley
Sunday school 9:30. Harold Porter, superintendent.

NEGLECT OF COMMON CONSTIPATION IS A SERIOUS MATTER

Prevent This Condition With
Kellogg's ALL-BRAN

The first question your doctor asks is whether you are constipated. He knows that this condition may cause headaches, loss of appetite and energy, sleeplessness. It is often the starting point of many diseases.

You can prevent and relieve common constipation so easily. Just take a delicious cereal once a day. Laboratory tests show that Kellogg's ALL-BRAN provides "bulk" to exercise the intestines, and vitamin B to further aid regular habits. ALL-BRAN is also a rich source of blood-building iron.

The "bulk" in ALL-BRAN is much like that found in leafy vegetables. Within the body, it forms a soft mass. Gently, it clears out the intestinal wastes.

Isn't this "cereal way" safer and far more pleasant than taking patent medicines—so often harmful? Two tablespoonsful of ALL-BRAN daily are usually sufficient. With each meal in serious cases. If not enjoyed this way, see your doctor.

Enjoy ALL-BRAN as a cereal, or use in cooking. Get the red-and-green package at your grocer's. Made by Kellogg in Battle Creek.

Porter, superintendent.
The revival series which began this week will continue with service Sunday at 7 p.m. and each night during the week at 7:30.
The 4th Quarterly Conference for the charge will be held Sunday at 2 p.m. at the Mt. Pleasant church. A good attendance is desired and your presence will be appreciated.

Calvary Evangelical Church
Sunday School at 9:30 James Darr Supt. Prayer and praise service at 10:30 conducted by the Class leader Otis Shifferly. Worship with sermon by Rev. M. W. Sundermann on Thursday Night, at 7:30 San Time.

Antioch M. B. C. Church
Rev. Simon Moore, pastor
Sunday school 9:30. G. H. Bright, supt. Arthur Fosnough, secretary.
Preaching service 10:30. Special singing.
No evening service.
Prayer meeting Wednesday eve. 7:30. Homer Ginter, class leader.
We invite you to come and worship with us in this old-fashioned friendly church.

Thermometer for Blind
A thermometer with the degrees marked with raised figures and inscribed in Braille characters has been invented for the use of blind persons.

CLOSE MEETING WITH BANQUET

CONTINUED FROM PAGE ONE
board of trustees of Purdue, spoke on elimination of useless governmental units, and Alonzo J. Hammond, Chicago, president of the American Society of Civil Engineers, who discussed high development and the operations of the Reconstruction Finance Corporation, were other speakers at the banquet.

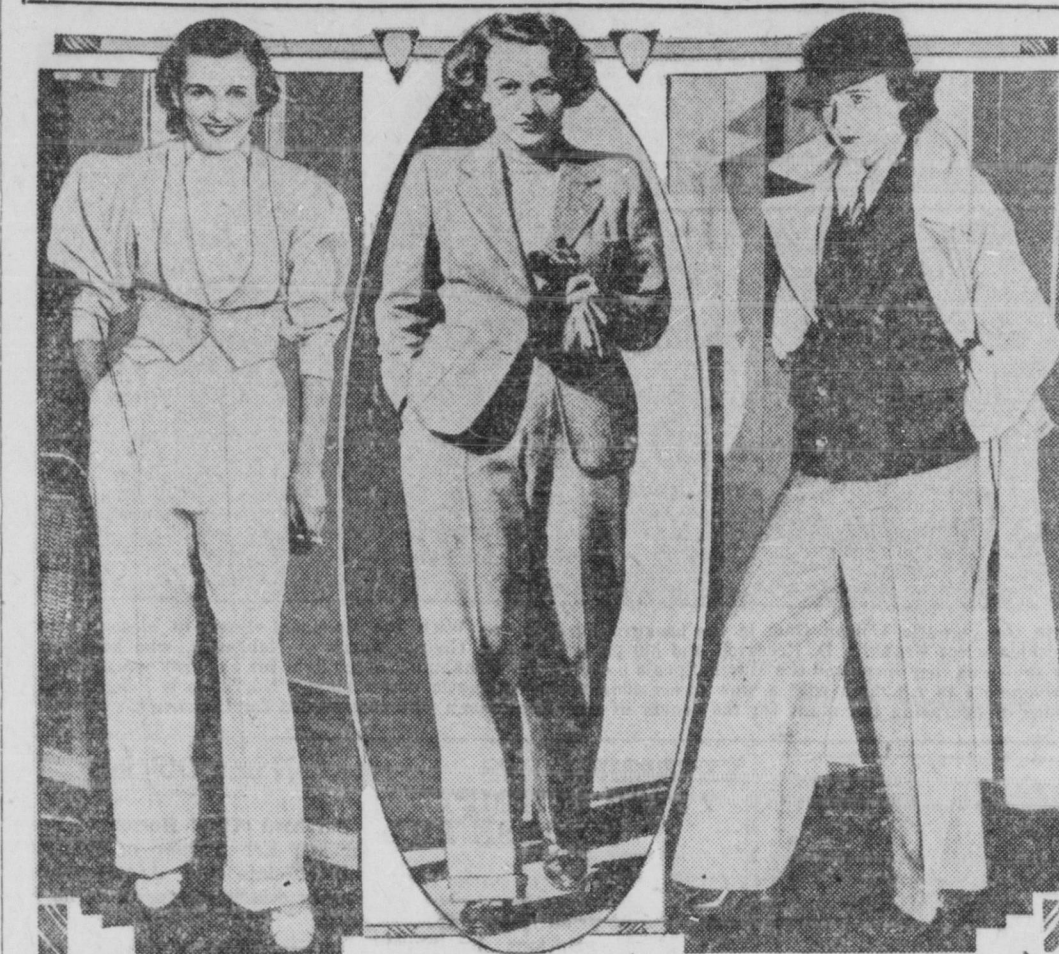
Officers elected at a meeting of the Indiana Highway Materials and Equipment association yesterday are: President, C.D. Ward, Indianapolis; vice president, C.A. Wilson, Indianapolis; treasurer, Dorsey Allison, Indianapolis, and secretary, Walter O'Neill, Crawfordsville.

Gardening in the New Era

Whatever the future may bring in the way of social changes, whether the dream of "technocracy" comes true or proves to be visionary, it seems to be generally agreed that leisure will be increased.

Trousers Included in Milady's Spring Styles

Fad Started by Marlene Dietrich Threatens To Assume Epidemic Proportions. Trous-
ered Creations Designed For All Occasions—Even Formal Evening.



Evening Formality - Marlene Dietrich - For street wear.

Woman is to wear trousers at last. We were told long ago that milady's styles were going masculine, but we never dreamed just how far they would go. Now, since Marlene Dietrich, German screen importation, defied convention and adopted masculine attire, the ice has been broken, and fashion experts predict that the fad will sweep the nation. In fact, the style solons seemed pleased at the turn of things. They assert that mannish attire makes the feminine type of woman more alluring. But it is hardly likely that staid matrons will readily swing to the radical innovation. Above are some of the creations included in the Spring list. In center is La Dietrich, sporting the lounge suit that started the ball rolling. There is very little difference between her suit and a man's ordinary street suit, except that it is cut after a more shapely pattern. At right is a street or sports suit that, designers claim, will be popular this Spring. It consists of grey wool trousers, cut somewhat wider than a man's, blue double-breasted jacket and a felt hat. The light top coat is also of mannish cut. At left is milady's formal evening suit. The trousers are of creamy ribbed wool, pleated of the inanner made popular by the Prince of Wales. The jacket, which contains the only feminine touch, is something like a man's dress vest, except that it boasts puffed sleeves. So be careful men. Look twice before you smack a fellow on the back this Spring—the "fellow" may be a lady.

Whether our cities ever grow larger, whether decentralization of population and industries will mark the next step in growth, or otherwise, there seems no basis for doubt about the great expansion of garden communities and suburbs.

Gardening is no mere recreation; it partakes of philosophy, it ranks as a fine art; it provides material for whatever sort of intellectual exercise one may be inclined to take, as well as physical exertion of the most wholesome sort.

Home and garden are in partnership, for the garden is part of the very fabric of the home. It provides for the children a background of beauty, a playground safeguarded and healthful, and its products are growth-giving foods of supreme importance.

Gardening, in short, is a mode of life ideally suited to a nation of registered during prosperity, has increased in the depression into a pleasurable. Its devotees employ complete reverse movement back to the land.

SCHMITT'S QUALITY MEAT MARKET

Phones 95 - 96

We will have a nice selection of Beef quarters 60 to 125 lbs. from 5 to 9c a lb. Also some nice chunks of Beef for canning or summer sausage, at 9c a lb.

Whole Hog, dressed, 5½c; ½-hog, head off, 6c lb. Some nice chunks of Pork, 6 to 8 lbs. each, at 8c lb.

Fresh Ground Hamberger, 3 lb. for 25c
All Pork Sausage, Bulk, 3 lb. for 25c
Fresh Casing or Smoked Sausage 10c lb
Rib or Plate Boiling Beef, 3 lb. for 25c
Pork Shoulders in rough 5½c lb
Pork Hams in the rough 9c lb
Fresh Side Pork, sliced or chunk, 3 lb. for 25c
Veal Shoulder Chops or Steak 15c lb
Dressed Tame Rabbits 15c lb
Fresh Pork Brains 10c lb
Tender Beef Steak 18c lb
Good Bulk Mince Meat 10c lb
Burco Coffee 19c, Bursleys High Grade 27c
3 cans Corn, Peas or Tomatoes for 25c
Nice selection of Chickens, Spring Lamb
Bulk or Fresh Canned Oysters.

H. P. Schmitt Meat Market

CHICAGO YOUTH FREED BY JURY

CONTINUED FROM PAGE ONE
the first he was found guilty and sentenced to 18 years' imprisonment. The state supreme court reversed the verdict several weeks ago.

Sitting alone in the rear of the crowded courtroom, Mrs. Helen Smith, widow of the slain officer, received the verdict with composure. "I only know that my husband is dead," she said. "What can I say?"

Smith was slain when he surprised Corry taking a forbidden swim in Marshall high school pool May 30, 1931. The youth shot Smith with a revolver which he said he had stolen two weeks before and which, he said, he planned to return to its owner after he finished the swim.

During the trial two alienists had testified the youth, although average in school work, was below normal in moral intellect. The state had argued that Corry obtained the revolver to protect himself, and was prepared to use it if necessary. The state had not demanded the death penalty.

REPORT GLASS HAS ACCEPTED APPOINTMENT

CONTINUED FROM PAGE ONE
matter in any way. Some of his friends doubted he would accept a cabinet post. They believed he might prefer to maintain his vaunted political independence, rather than place himself in a position where he would be com-



mitted to support Mr. Roosevelt's policies. He disagrees at present with the president-elect's decision to open negotiations with European nations seeking war debt revision.

The Post said election of Glass to head the treasury department was considered "an omen that inflationary proposals have been put on the high shelf by Mr. Roosevelt" as Glass is a militant defender of sound money. The Virginian was co-author of the federal reserve act and served as secretary of treasury for more than a year in the latter part of the Wilson administration. He served 20 years in the house and has been in the senate since 1920. He is 74 years old.

Senator Walsh, now 73 years old, has served continuously in the senate since 1913. He is recognized as one of the foremost constitutional lawyers in congress. He was the senate's prosecutor in its investigation and revelation of the Harding administration oil scandals.

HITE'S GROCERY

PHONES 31 and 204

Sugar	10 lbs. Fine Granulated	42c
BANANAS		
4 lbs.	19c	
10 lbs. Fresh	19c	
Corn Meal	25c	
3 lbs. Ginger	25c	
Snaps	25c	
8 lbs. Rolled	25c	
Oats	25c	
Naval Oranges	15c	
dozen	15c	
KRAUT		
can	5c	
Pure Ground	19c	
Pepper, lb.	29c	
Good Imperial	29c	
Tea, lb.	5c	
Good Corn	5c	
can	25c	
4 cans Hand	25c	
Pack Tomatoes	25c	

Flour

24 lb. sack PILLSBURY **59c**

2 lb. box	25c	Large Prunes	25c
Cocoa	25c	3 lbs.	25c
Toilet Tissues	25c	Pork & Beans	5c
6 for	5c	can	5c
HOMINY	5c	Fresh Salted	7c
can	5c	Peanuts, lb.	15c
Spaghetti	5c	Quart cans Best	15c
can	5c	Mustard	15c

Lima Beans

Hand Picked Baby **lb. 5c**

Qt. can Peanut	19c	Gallon cans	35c
Butter	5c	Applebutter	15c
Little Elf Dessert	5c	Lg. can Apricots	15c
Powder	5c	in heavy syrup	35c
Perfect Pumpkin	5c	Gallon cans	35c
can	5c	Peaches	35c

Apples

Fancy Ben Davis **10 lbs 25c**

Flour 24 33c

AVONDALE—QUALITY—SPECIALLY PRICED

Flour 24 lb. sack 43c
Country Club, Special at
For All Baking

Flour 24 lb. sack 55c
Gold Medal, Pillsbury, Special
Nationally Known Quality

A NEW STAR VALUE! PORK & BEANS 3 No.2 tall cans 20c

Country Club, New 30 oz. can—Savory Sauce

Coffee	19c	Corn Meal	29c
Jewel, pound		25 lbs.	
Smooth, Fragrant		Yellow, White, 10 lbs.	13c
French, pound	25c		
Country Club, lb.	28c	Soap Chips	21c
Bread	6c	Easy Task, 5 lbs.	
1½ lb. loaf		Sugar	44c
Country Club, lb. loaf	4c	Granulated, 10 lbs.	
Soda Cracker	19c	Kristal Klear	
2 lb. box		Motor Oil	\$1.08
Fresh, Crisp		2 gallon	
Butter	18½c	Penn Rad, No. 20	
Creamery, lb.			
Fresh Churned, Plain Print			

GOLD MEDAL SOFTASILK CAKE FLOUR 2½ lb. 12 oz. pkg. 23c

With Betty Crocker Cooling Rack

APPLES 6 lbs. 25c	
FANCY BOX ROMAN BEAUTIES	\$1.59 box
TANGERINES	dozen 10c
Sweet, Juicy	
GRAPE FRUIT	7 for 25c
LARGE SIZE	
HEAD LETTUCE	2 for 15c
LARGE SOLID HEADS	

—QUALITY MEATS—

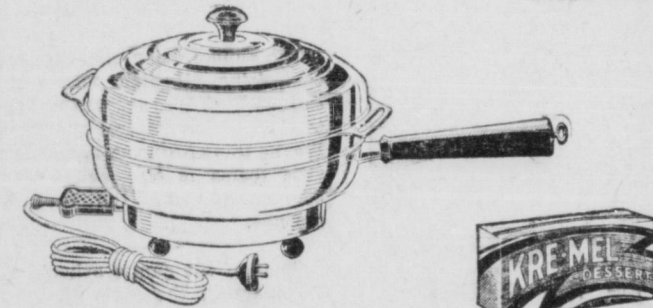
Swiss Steak,	lb. 12½c
Round or Loaf	
Pot Roasts	lb. 8½c
Tender, Juicy Beef	
Beef Roasts	lb. 10c
Chuck or Arm	
Hamberger	3 lbs. 19c
Fresh Ground Beef	

KROGER STORES

Appelmans Grocery

Phones 215 and 219—Delivery Service

Bananas	19c	Burco Coffee	19c
4 pounds		pound	
Florida Oranges	15c	Bursley High	27c
dozen		Grade, lb.	
Sunkist Oranges	15c	Little Elf, Drip	29c
dozen		pound	
Grape Fruit	25c	Bulk Coffee	16c
6 for		pound	
Fancy Eating	25c	Perfect Coffee	\$1.00
Apples, 4 lbs.		3 pounds	



You Will Want This
ELECTRIC COOKER
It Boils, Roasts, Stews and Fries.
Buy 5 packages KRE-MEL, 5c each 25
Cheffette \$7.50
Value \$7.75
For **\$2.20**

Peaches,	39c	Pears	20c
gallon can		can 10c and	
Cherries	47c	Golden Bantam	10c
gallon can		Corn, can	
Apple Butter	35c	Corn and Green	7c
gallon can		Beans, can	
Black Raspber-	15c	Tomatoes	21c
ries, can		3 cans	
Little Elf and Perfect		Aunt Jimmie Pancake	
Peaches,	29c	Flour,	
2 cans		2 pkgs.	19c
		Laundry Soap	5c
		2 bars	

KRISTAL-KLEAR		Old Reliable	
SUGAR		Coffee	
10 pounds		Cup Tested	
44c		31c	
Produced in America		With Fancy Glass.	
100% Pure.			

Fisher & Harris

PHONES 3, 4 and 5 FINE GROCERIES

GRAPE FRUIT, Floridas, Balls of Juice, 7 for	25c
SWEET POTATOES, Fine Quality, 8 lbs.	25c
FLOUR, Blue Ribbon for better bread and pastry	55c
24 pounds	
MACARONI or SPAGHETTI, Short Cut, 4 lb.	19c
PURE SWANTONS BUCKWHEAT, large bag	25c
PEANUT BUTTER, 2 pounds	17c
YELLOW or WHITE GRANULATED CORN	
MEAL, 10 pounds	19c
P. W. BUTTER CRACKERS, 3 pkgs.	35c
HONEY, Pure Strained, No. 5, ½ gallon pail	39c
PEPPER, Pure Ground, pound	20c
MOTHERS ALUMINUM OATS, large pkg.	24c
WAX PAPER, 2 - 10c Rolls	15c
SEEDS or SEEDLESS RAISINS, 3 - 15 oz. pkgs.	25c
COCOA, Herscheys, pound can 20c; ½ pound	10c
10c RED KIDNEY BEANS, 4 cans	25c
ORANGES, Sunkist Navels, medium size, dozen	20c
SPECIAL WASHBOARDS	42c
EASY TASK SOAP CHIPS, 5 pound pkg.	25c
MUSTARD, Battleship, quart jar	15c
BABO for Cleaning, can	12½c
OLD DUTCH CLEANSER, 2 cans	15c

Sugar, fine granulat-	ed, 10 lbs. 45c	White Dove Brand	
Flour, Pride of Deca-	tur, 12 lbs. 23c	Baking Molasses,	
24 lbs. 38c		large can	19c
Whole Wheat Flour,	5 lbs. 19c	Red Pitted Cherries,	
Quality Oleo, 2 lbs. 25c		2 No. 2 cans	25c
Old Reliable Coffee,	fancy tumbler with	Mayonaise, qt. jar	25c
each pound	32c	you sleep, lb. can	49c
Quality Golden Rio	Coffee, 3 lbs. 45c	Toddy, the Chocolate	
— Coffee, 3 lbs. 45c	pound	Malted Drink, lb.	
Royal Anne Cherries	in syrup, 2 lg cans 49c	can	45c
DelMonte Apricots, 2	No. 2 cans	DelMonte Whole Ker-	
No. 2 cans	29c	nel Corn, 2 cans	29c
Kraut, Silver Fleece	Brand, 3 lge cans 25c	Beechnut Tomato	
Kraut, Crescent Brand	4 No. 2 cans	Juice, 3 cans	25c
Shelled Pop Corn, 4	pounds	Postum Cereal, large	
Bulk Rolled Oats, 5	pounds	package	22c
Duz Washing Pow-	der	Rex Mineral Soap, 2	
Quick Arrow Soap	Chips, 2 lg. pkgs 25c	10c pkgs.	15c
Quick Naptha White	Laundry Soap, 10	Tomatoes, No. 10 gal-	
bars	25c	lon can	34c
		Crushed Pineapple	
		No. 10 gallon can 69c	
		Queen Olives, qt. jar	29c
		Special Fancy Market	
		Baskets	25c
		Cabbage, hard white	
		heads, pound	3c
		Full assortment of	
		Fruits and Vegetables	